

## Operating Instructions Software (PostScript3 Printer Driver) For Digital Imaging Systems

---



Before using this software, please carefully read these instructions completely and keep these operating instructions in a safe place for future reference.

English

The following trademarks and registered trademarks are used throughout this manual:

Microsoft, MS-DOS, Windows, Windows Server, Windows Vista, PowerPoint, Excel and Internet Explorer are either registered trademarks or trademarks of Microsoft Corporation in the United States and/or other countries.

Microsoft product screen shot(s) reprinted with permission from Microsoft Corporation.

i386, i486, Intel, Celeron, Intel Centrino, Pentium and Itanium are trademarks of Intel Corporation and its subsidiaries.

IBM and AT are the trademarks or registered trademarks of International Business Machines Corporation in the U.S. and other countries.

The USB-IF Logos are trademarks of Universal Serial Bus Implementers Forum, Inc.

Mac, Mac OS, Macintosh, True Type and Apple are trademarks of Apple Inc., registered in the U.S. and other countries.

Novell, NetWare, IntranetWare, NDS are registered trademarks of Novell, Inc. in the USA and other countries.

PEERLESSPage™ is a trademark of the PEERLESS Systems Corporation; and, PEERLESSPrint® and Memory Reduction Technology® are registered trademarks PEERLESS Systems Corporation; and, COPYRIGHT © 2005 PEERLESS Systems Corporation.

COPYRIGHT © 2005 Adobe Systems Incorporated. All Rights Reserved; and Adobe® PostScript® 3™.

Universal Font Scaling Technology (UFST) and all typefaces have been licensed from Monotype Imaging Inc.

Monotype® is a registered trademark of Monotype Imaging Inc. registered in the U.S. Patent and Trademark Office and may be registered in other jurisdictions.

ColorSet™ is a registered trademark of Monotype Imaging Inc. registered in the U.S. Patent and Trademark Office and may be registered in other jurisdictions. ColorSet™ Profile Tool Kit, Profile Studio and Profile Optimizer are trademarks of Monotype Imaging Inc. and may be registered in certain jurisdictions.

COPYRIGHT © 2007 Monotype Imaging Inc. All Rights Reserved.

PCL is a trademark of Hewlett-Packard Company.

Adobe, Acrobat, Adobe Type Manager, PostScript, PostScript 3 and Reader are either registered trademarks or trademarks of Adobe Systems Incorporated in the United States and/or other countries.

Application software for this device contains a number of programs licensed under the terms of the GNU Lesser General Public License and other open software. For more details and applicable license thereof, please refer to the Read Me file for the software.

All other product/brand names, trademarks or registered trademarks identified herein are the property of their respective owners.

In these Operating Instructions, some ™ and ® marks are omitted from the main text.

© Panasonic Communications Co., Ltd. 2006-2009

Unauthorized copying and distribution is a violation of law.

Panasonic accepts no liability for any effects resulting from the use of this software or manual.

Published in Japan.

The contents of these Operating Instructions are subject to change without notice.

# Table of Contents

---

<b>General Description .....</b>	<b>4</b>
<b>Printing from Windows Applications.....</b>	<b>6</b>
■ Basic Operation.....	6
■ Configuring the Printer Driver Settings .....	7
■ Job Status Utility.....	20
■ Mailbox .....	24
■ Mailbox Printing (For DP-C406/C306/C266, DP-C405/C305/C265, DP-C354/C323/C264/C263/C213).....	26
■ Job Control (Output Queue) (For DP-C406/C306/C266, DP-C405/C305/C265, DP-C354/C323/C264/C263/C213).....	28
■ Mailbox Printing (For DP-8060/8045/8035, DP-8032/8025, DP-3030/2330).....	30
■ Job Queue (For DP-8060/8045/8035, DP-8032/8025, DP-3030/2330) ....	31
■ Mailbox Printing (For DP-8020P/8020E, DP-190/180, UF-9000).....	32
■ Secure Mailbox (For DP-8020P/8020E, DP-190/180, UF-9000).....	34
■ Job Queue (For DP-8020P/8020E, DP-190/180, UF-9000).....	36
<b>Printing from Macintosh Applications .....</b>	<b>38</b>
■ Basic Operation.....	38
■ Configuring the Printer Driver Settings (For Mac OS 8.6/9.x) .....	44
■ Configuring the Printer Driver Settings (For Mac OS X).....	54
<b>Appendix.....</b>	<b>76</b>
■ Specifications (For DP-C406/C306/C266) .....	76
■ Specifications (For DP-C405/C305/C265, DP-C354/C323/C264/C263/C213).....	77
■ Specifications (For DP-8060/8045/8035) .....	78
■ Specifications (For DP-8032/8025) .....	78
■ Specifications (For DP-3030/2330) .....	79
■ Specifications (For DP-8020P/8020E) .....	79
■ Specifications (For DP-190/180, UF-9000) .....	80
■ Printing Area.....	81
■ PostScript® Font List.....	82
<b>Troubleshooting .....</b>	<b>84</b>
■ Printing Operation Failure .....	84
■ Documents Not Printing Correctly .....	85
■ Error Messages Displayed on the Computer .....	86
■ Error Messages Displayed on Your Machine For DP-C406/C306/C266, DP-C405/C305/C265, DP-C354/C323/C264/C263/C213 .....	87

## General Description

This manual describes how to configure print settings, and how to use the convenient and advanced functions of the PostScript® 3™ Printer Driver.

For PostScript® 3™ Printer Driver details, and advanced function configuration, refer to "Operating Instructions (For Setting Up PostScript3 Printer Driver)".

### ■ Printing from Windows® application

#### 1. Basic Operation

Describes the print dialog box when printing from the application software.

#### 2. Configuring the Printer Driver Settings (Configuring from Properties screen)

Describes how to configure the application software's print settings. For Windows® the following two methods are available. (Although both methods can configure similar settings, this manual will only explain the method (1) below.)

(1) Right-click on the printer icon, and then select **Printing Preferences** in the pop-up menu to configure the print settings. (Page 7)

- The configured print settings are common settings for all application software being used.

(2) Select **Properties** from the application software's **Print Settings** screen to configure the print settings.

- The configured print settings can be changed individually from each application software being used.

#### 3. Advanced Settings

(1) Job Status Utility

The Job status utility displays when the printing job is completed on a network connected Panasonic printer. (Page 20)

(2) Mailbox

If the hard disk drive is installed, the Printing data can be saved on the hard drive for later printing. (Page 24) User ID and Password are required when printing from the Hard Disk Drive. Thus, Mailbox print is suitable for printing confidential documents.

### ■ Printing from Mac® application

#### 1. Basic Operation

#### 2. Configuring the Printer Driver Settings (Configuring from Print setting screen)

Configures the necessary print settings from the pull down menu. (Pages 44 and 54)

Depending on the Mac OS® version being used, some settings may be restricted and not configurable.

#### 3. Mailbox

Same as Windows.

# Memo

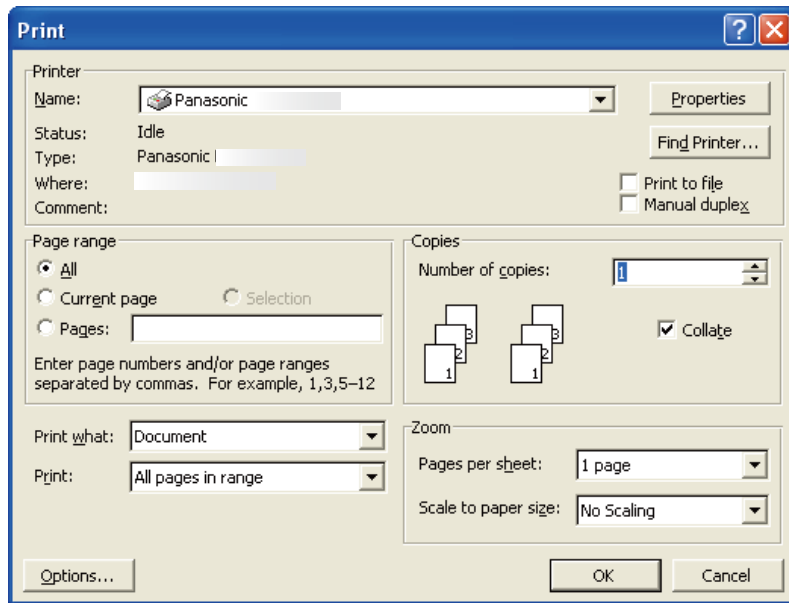
# Printing from Windows Applications


## Basic Operation

If the printer driver is properly installed, and setup as the default printer, it's a simple operation to print on it from any Windows application.

To print from most Windows applications, use the **Print** command in the **File** menu.

Selecting the **Print** command typically displays the following Print dialog box:



Setup your preferred configuration (Page range, Number of copies, etc.) first, and then click the  button to start printing.

### Note:

If more than one printer is installed on your PC, follow the steps below to set a **default printer**:

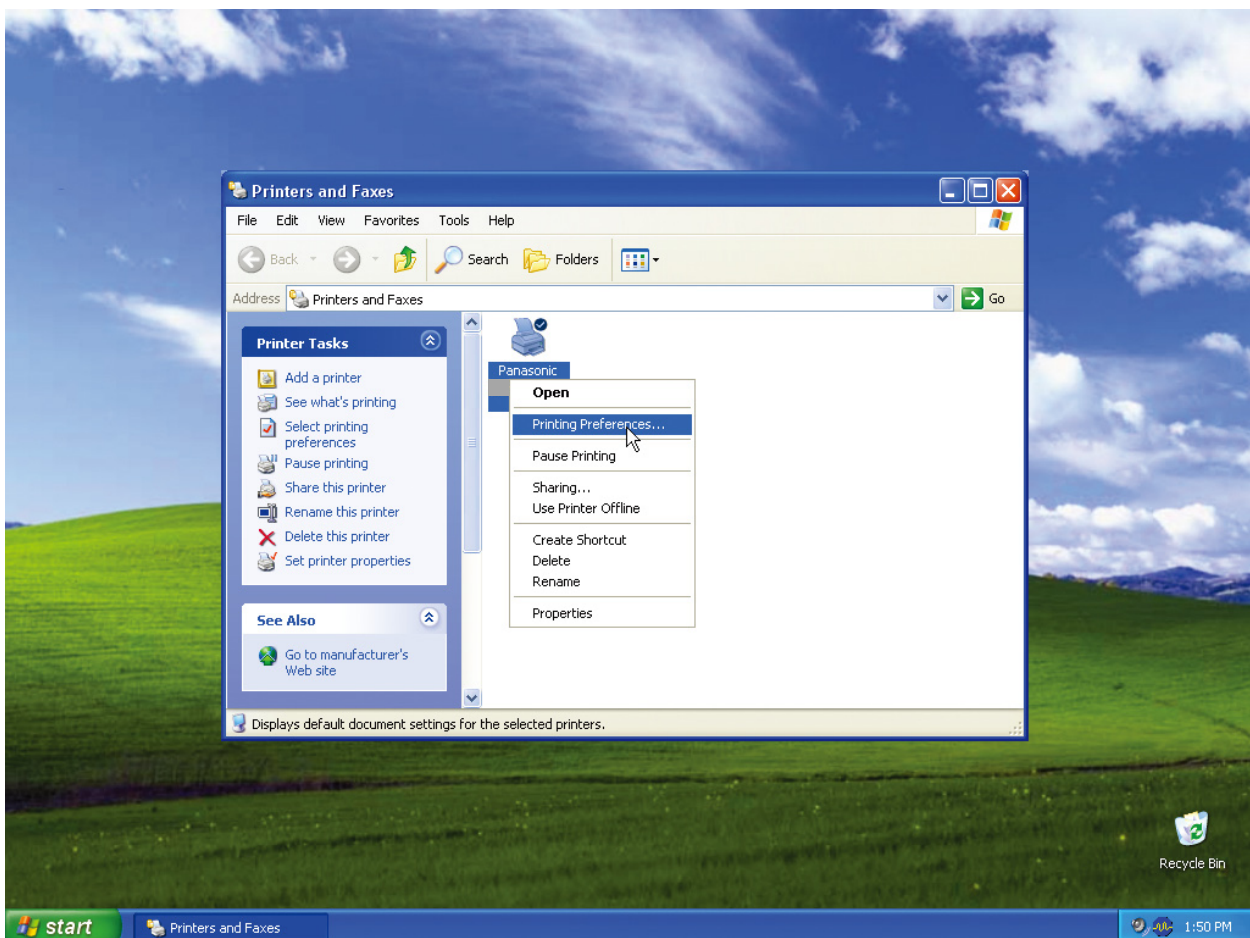
1. Click the **Start** button, select **Printers and Faxes** icon (For Windows 2000: Click the **Start** button, select **Settings**, and then click the **Printer** icon. Windows Vista: Click the **Start** button, select **Control Panel**, and then click the **Hardware and Sound: Printer**. Windows Server 2008: Click the **Start** button, select **Control Panel**, and then click the **Printers**).
2. Right-click on the desired printer icon, and then select **Set as Default Printer** in the popup menu. The check mark next to the printer icon denotes a Default Printer.

# Configuring the Printer Driver Settings

## ■ Opening the Printing Preferences Dialog Box

To change the printer settings, open the dialog box for the printer properties by performing the following steps.

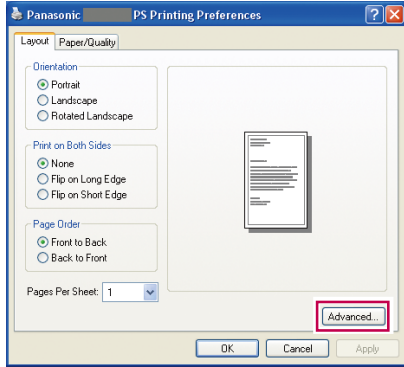
- 1 Click the **Start** button, select **Printers and Faxes** icon. (For Windows 2000: Click the **Start** button, select **Settings**, and then click the **Printers** icon. Windows Vista: Click the **Start** button, select **Control Panel**, and then click the Hardware and Sound: **Printer**. Windows Server 2008: Click the **Start** button, select **Control Panel**, and then click the **Printers**.)
- 2 Right-click on the desired printer icon in the **Printers and Faxes** (Printers) folder, and then select **Printing Preferences...** in the pop-up menu.



### 3 The Printing Preferences... dialog box appears.

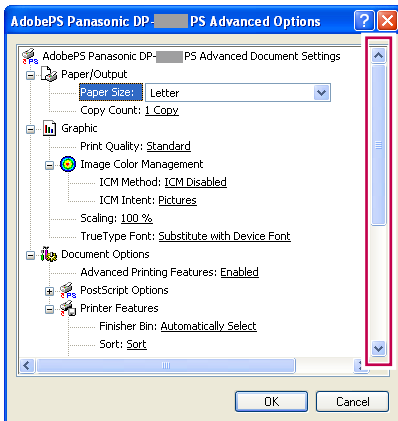
DP-C406/C306/C266, DP-C405/C305/C265:

1. Select the **Layout** or the **Paper/Quality** tab.



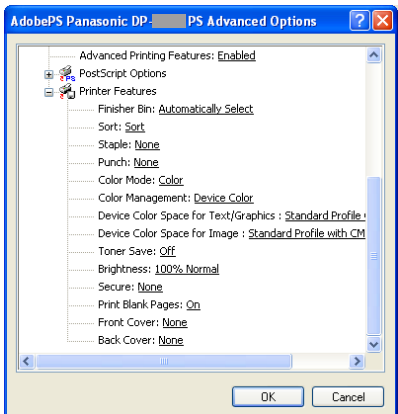
(see pages 11-12)

2. Click the **Advanced...** button.



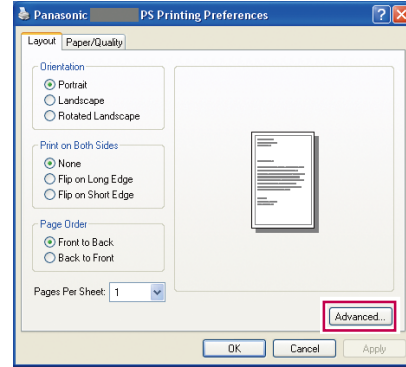
(see pages 13-19)

(scroll the dialog box)



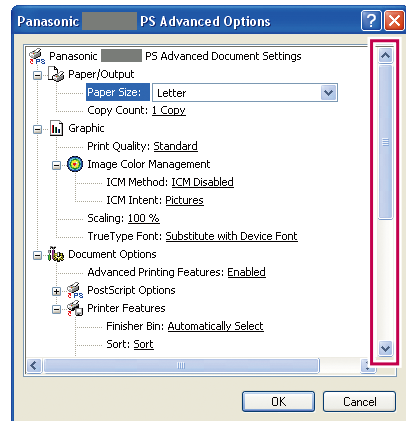
DP-C354/C323/C264/C263/C213:

1. Select the **Layout** or the **Paper/Quality** tab.



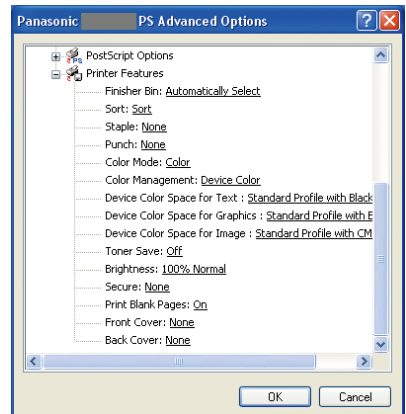
(see pages 11-12)

2. Click the **Advanced...** button.



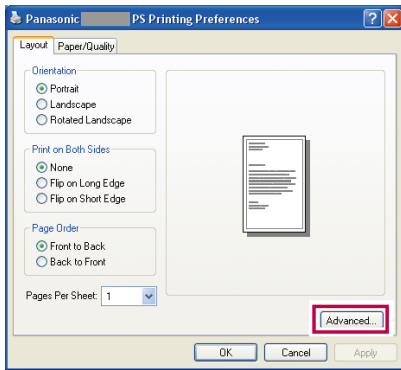
(see pages 13-19)

(scroll the dialog box)



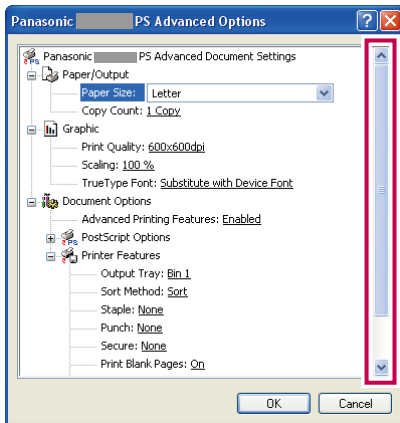
**DP-8060/8045/8035:**

1. Select the **Layout** or the **Paper/Quality** tab.

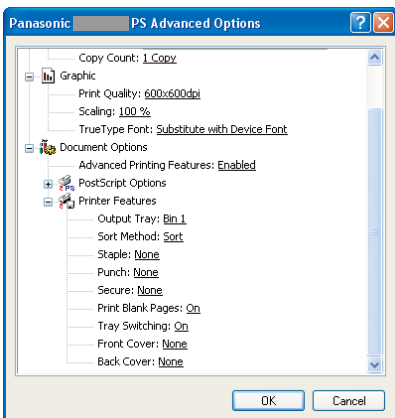


(see pages 11-12)

2. Click the **Advanced...** button.

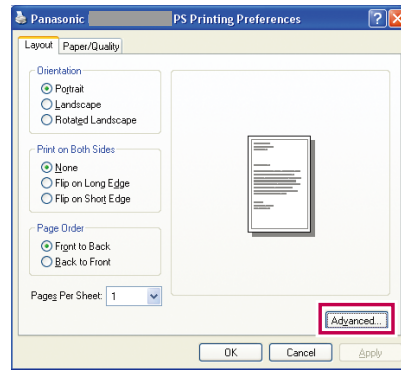


(see pages 13-19)  
(scroll the dialog box)



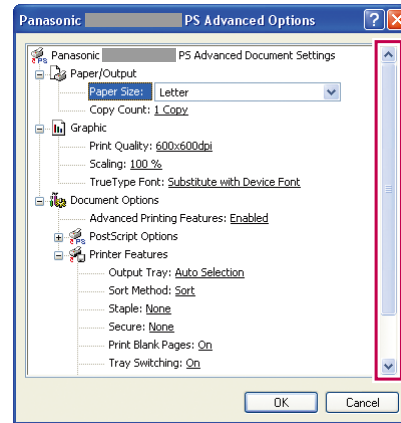
**DP-8032/8025, DP-3030/2330:**

1. Select the **Layout** or the **Paper/Quality** tab.

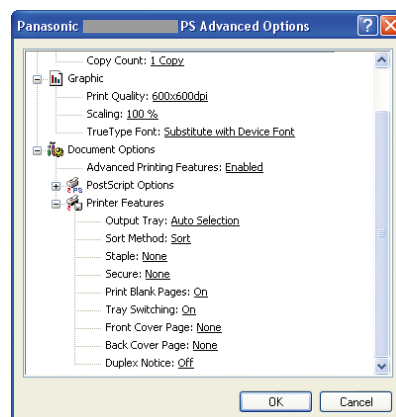


(see pages 11-12)

2. Click the **Advanced...** button.

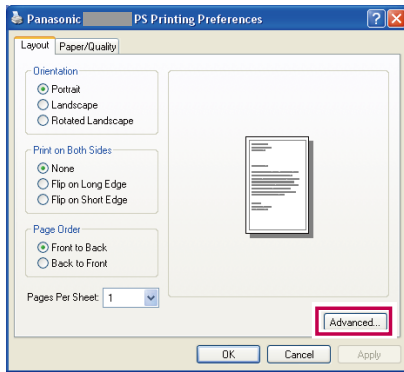


(see pages 13-19)  
(scroll the dialog box)



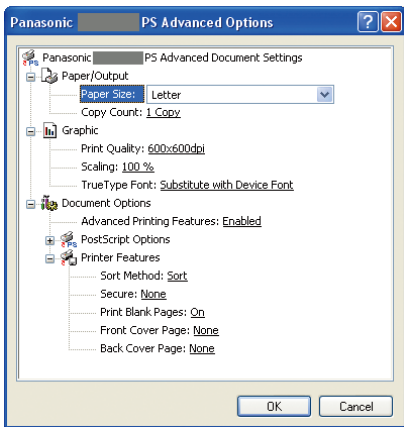
## DP-8020P/8020E:

1. Select the **Layout** or the **Paper/Quality** tab.



(see pages 11-12)

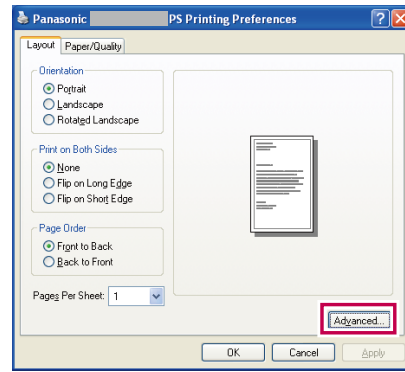
2. Click the **Advanced...** button.



(see pages 13-19)

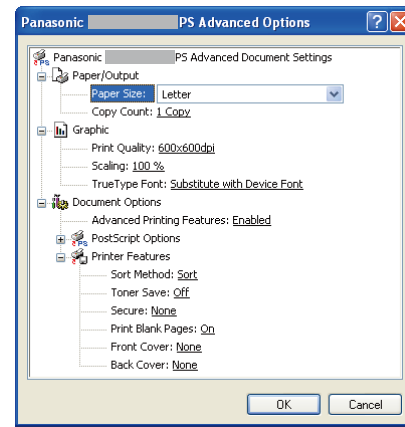
## DP-190/180, UF-9000:

1. Select the **Layout** or the **Paper/Quality** tab.



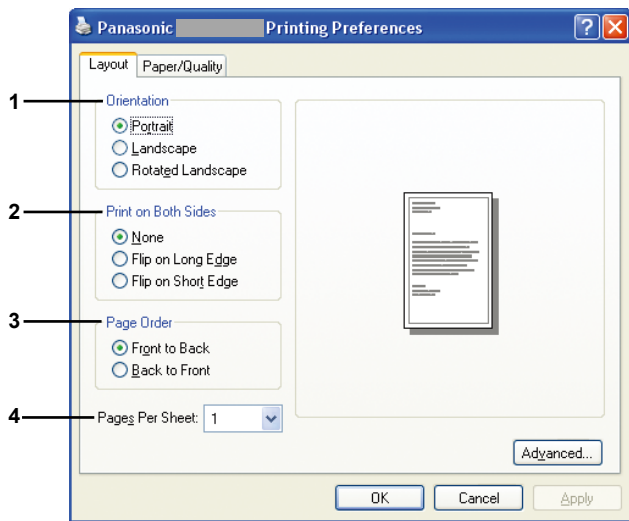
(see pages 11-12)

2. Click the **Advanced...** button.

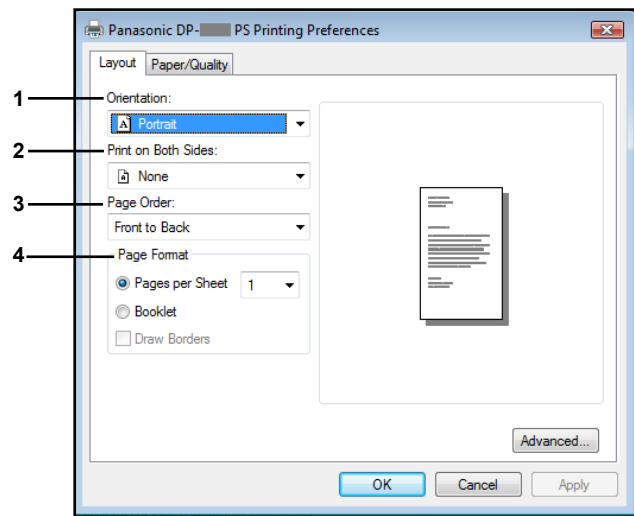


(see pages 13-19)

## Layout tab



(Windows 2000/Windows XP/Windows Server 2003)



(Windows Vista/Windows Server 2008)

### 1. Orientation

Portrait: prints portrait documents.

Landscape: prints landscape documents.

Rotated Landscape: prints documents rotated 90 degrees.

### 2. Print on Both Sides

None: prints on one side.

Flip on Long Edge/Long Side: prints on both sides so that the paper is spread at the center of the longer edge.

Flip on Short Edge/Short Side: prints on both sides so that the paper is spread at the center of the shorter edge.

### 3. Page Order

Front to Back: prints so that the first page is at the top of the printed sheets.

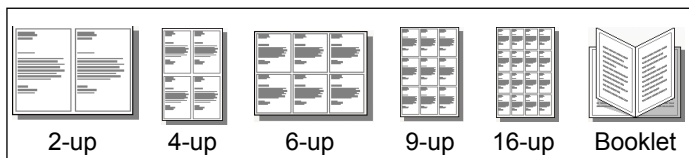
Back to Front: prints so that the first page is at the bottom of the printed sheets.

### 4. Pages Per Sheet / Page Format

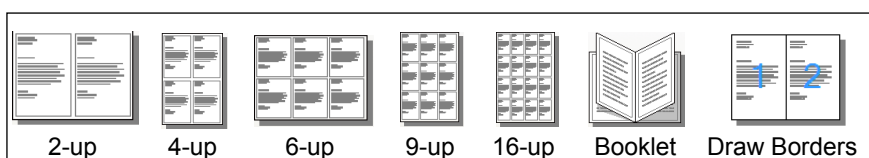
Prints multiple pages of the document on a single sheet.

1: prints a single page of the document on a single sheet. (default)

2, 4, 6, 9, 16, Booklet, Draw Borders: See below.

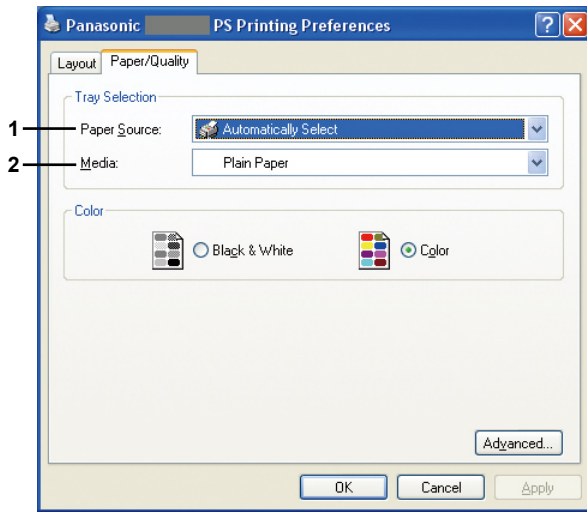


(Windows 2000/Windows XP/Windows Server 2003)

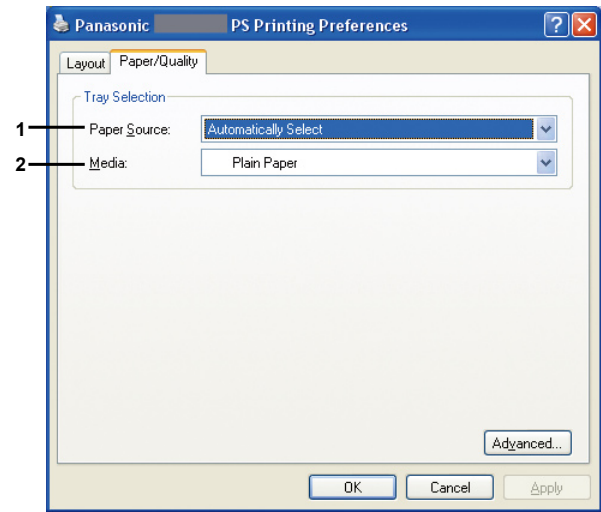


(Windows Vista/Windows Server 2008)

## ■ Paper/Quality tab



(For DP-C406/C306/C266, DP-C405/C305/C265,  
DP-C354/C323/C264/C263/C213)



(For DP-8060/8045/8035, DP-8032/8025,  
DP-3030/2330, DP-8020P/8020E,  
DP-190/180, UF-9000)

### Tray Selection

**1. Paper Source:** specifies the printing paper (paper tray).

- Automatically Select: loads paper from the paper tray where the selected paper is set (paper tray/Multi-Purpose Tray). When the paper of the same size is set in the multiple paper trays, paper is preferentially loaded from the upper tray.
- Multi-Purpose Tray: loads paper from the Multi-Purpose Tray.
- Tray 1 to Tray 4: loads paper from the specified paper tray (paper tray).

**2. Media:** specifies the type of paper.

- Specifies when setting the special paper such as thick paper in the paper tray/Multi-Purpose Tray.

#### Note:

*Specifies the type of paper. Paper Feed method (Tray or Multi-Purpose Tray) differ depending on the **Media (Plain Paper, Thick Paper, etc.)** selected. See below for the **Media**.*

*(For DP-C406/C306/C266, DP-C405/C305/C265)*

*Plain Paper, Thin Paper, Thick Paper, Index/Cover Paper, Coated/Cover Paper, Coated Paper, Labels, Glossy/Photo Paper, Recycled Paper, Envelope, Transparency, Index/Cover Paper (Preprinted), Coated/Cover Paper (Preprinted), Thick Paper (Preprinted), Coated Paper (Preprinted), Heavy Index, Heavy Index (Preprinted), Heavy Coated, Heavy Coated (Preprinted)*

*(For DP-C354/C323/C264/C263/C213)*

*Plain Paper, Thin Paper, Thick Paper, Envelope, Index/Cover Paper, Coated/Cover Paper, Coated Paper, Labels, Glossy/Photo Paper, Recycled Paper, Transparency, Index/Cover Paper (Preprinted), Coated/Cover Paper (Preprinted), Thick Paper (Preprinted), Coated Paper (Preprinted)*

*(For DP-8060/8045/8035, DP-8032/8025 and DP-3030/2330)*

*Plain Paper, Thick Paper*

*(For DP-8020P/8020E)*

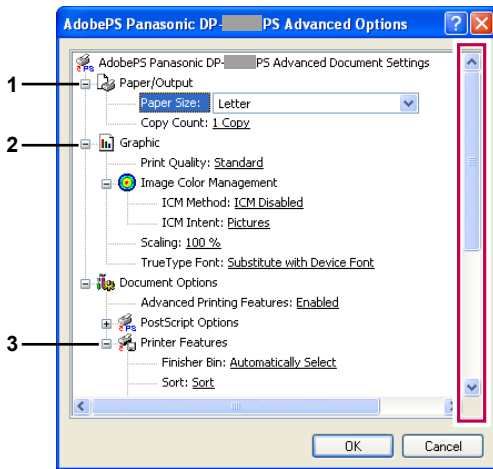
*Plain Paper, Thick Paper, Transparency, Envelope*

*(For DP-190/180, UF-9000)*

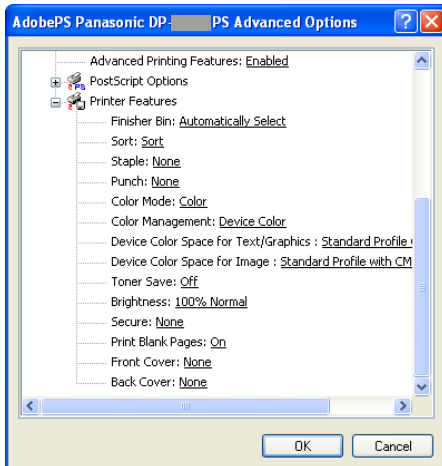
*Plain Paper, Thick Paper, Transparency, Label, Cotton Paper, Envelope*

## ■ Advanced Settings

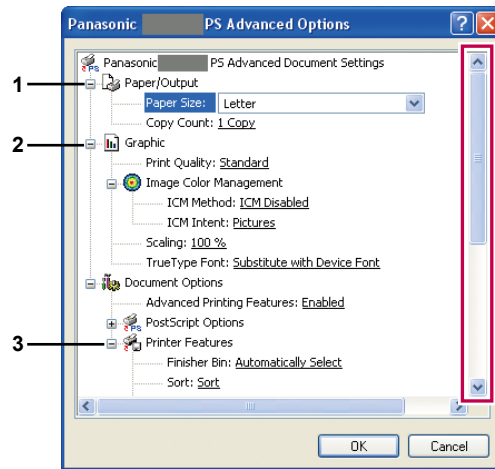
DP-C406/C306/C266, DP-C405/C305/C265:



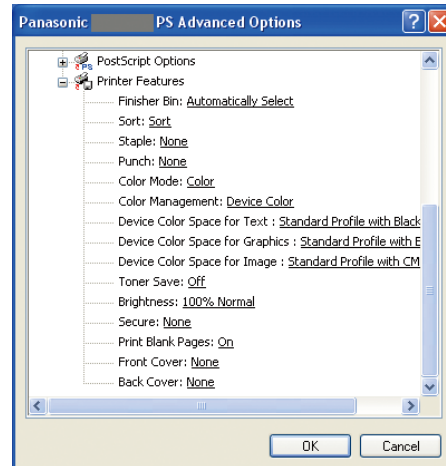
↓ (scroll the dialog box)



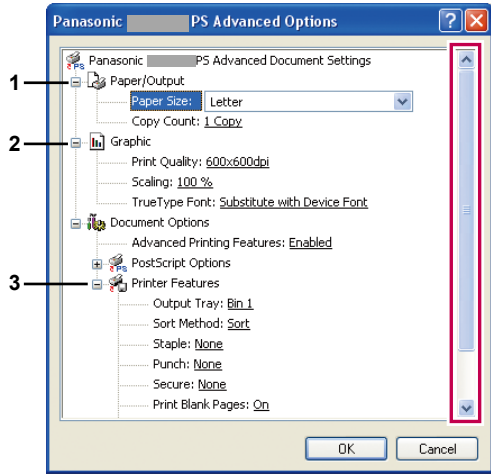
DP-C354/C323/C264/C263/C213:



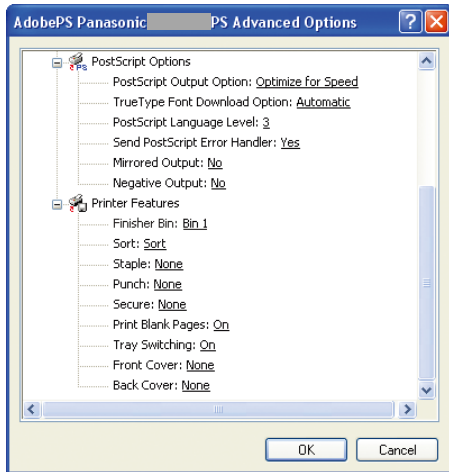
↓ (scroll the dialog box)



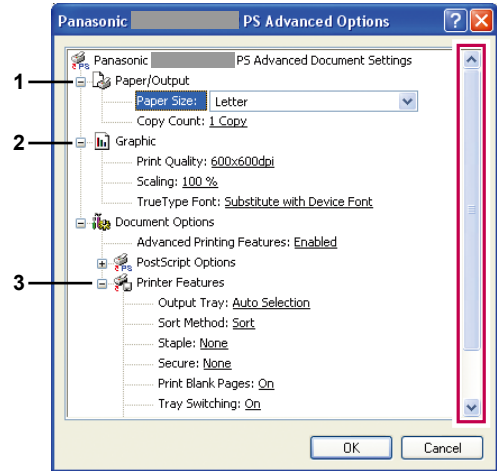
**DP-8060/8045/8035:**



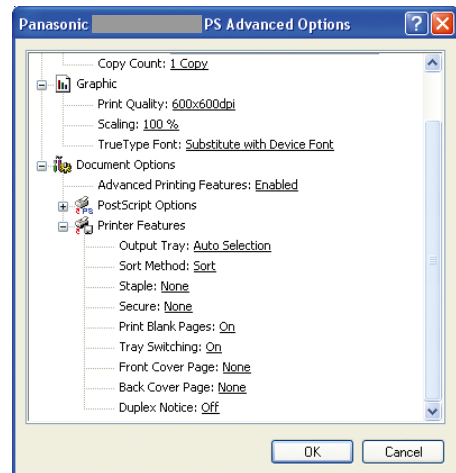
↓ (scroll the dialog box)



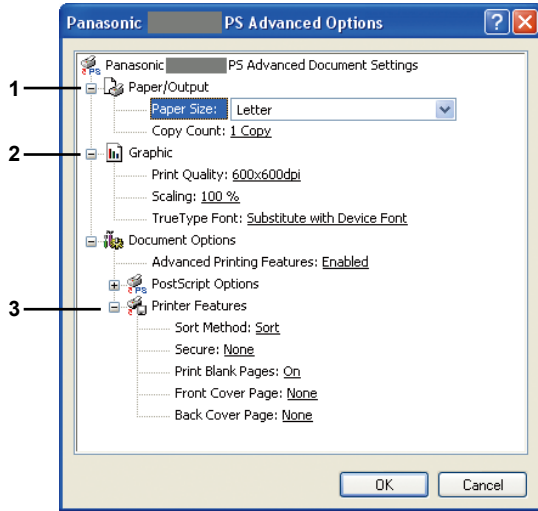
**DP-8032/8025, DP-3030/2330:**



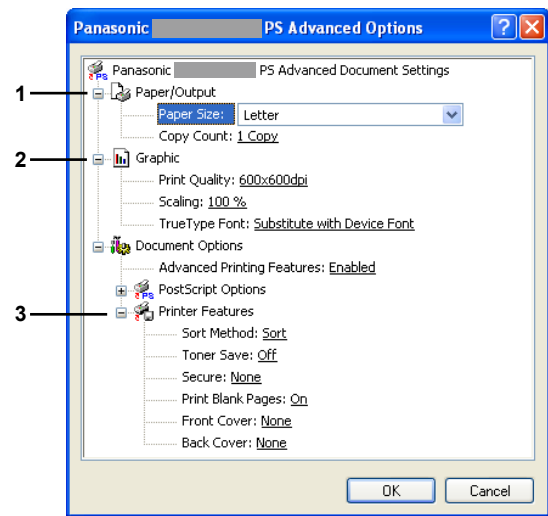
↓ (scroll the dialog box)



### DP-8020P/8020E:



### DP-190/180, UF-9000:



The following items of the advanced settings screen are the inherent Panasonic setting items. For other items, refer to "Operating Instructions (For Setting Up PostScript3 Printer Driver)".

## 1. Paper/Output

(For DP-C406/C306/C266, DP-C405/C305/C265, DP-C354/C323/C264/C263/C213)

<b>Paper Size</b>	12×18, A3, A4, A5, B4 (JIS), B5 (JIS), Env #10, Env C5, Env DL, Env Monarch, Executive, FLS1 8×13, FLS2 8.5×13, INVOICE, Ledger., Legal, Letter, PostScript Custom Page Size
<b>Copy Count</b>	Specifies the number of print copies.

(For DP-8060/8045/8035, DP-8032/8025 and DP-3030/2330)

<b>Paper Size</b>	A3, A4, A5, B4 (JIS), B5 (JIS), FLS1 8×13, FLS2 8.5×13, INVOICE, Ledger., Legal, Letter, PostScript Custom Page Size
<b>Copy Count</b>	Specifies the number of print copies.

(For DP-8020P/8020E)

<b>Paper Size</b>	A3, A4, A5, B4 (JIS), B5 (JIS), Env #10, Env DL, FLS1 8×13, FLS2 8.5×13, INVOICE, Ledger., Legal, Letter, PostScript Custom Page Size
<b>Copy Count</b>	Specifies the number of print copies.

(For DP-190/180, UF-9000)

<b>Paper Size</b>	A4, A5, B5 (JIS), Env#10, Env#9, Env C5, Env DL, Env Monarch, FLS1 8×13, FLS2 8.5×13, INVOICE, Legal, Letter, PostScript Custom Page Size
<b>Copy Count</b>	Specifies the number of print copies.

## 2. Graphic

### Print Quality

Specifies the printing resolution.

(For DP-C406/C306/C266, DP-C405/C305/C265, DP-C354/C323/C264/C263/C213)

<b>Standard</b>	Prints at a print engine resolution of <b>600×600 dpi</b> .
<b>Enhance</b>	Prints at a print engine resolution of <b>1200×1200 dpi</b> .

(For DP-8060/8045/8035, DP-8032/8025, DP-3030/2330, DP-8020P/8020E, DP-190/180, UF-9000)

<b>300×300dpi</b>	Prints at a print engine resolution of <b>300×300 dpi</b> .
<b>600×600dpi</b>	Prints at a print engine resolution of <b>600×600 dpi</b> .
<b>1200×600dpi</b>	Prints at a print engine resolution of <b>1200×600 dpi</b> .

**Note for DP-C406/C306/C266, DP-C405/C305/C265, DP-C354/C323/C264/C263/C213:**

- Printing takes more time when **Enhance** is selected.
- **Enhance** is not available when the Media Type is set to Transparency.

**Note for DP-8060/8045/8035, DP-8032/8025, DP-3030/2330, DP-8020P/8020E, DP-190/180, UF-9000:**

- Printing takes more time when **1200×600dpi** is selected.

### Scaling

Specify an enlargement or reduction percentage when printing documents. If enlargement/reduction can be set within the application software, indicate 100% here and specify the enlargement/reduction percentage in the Print dialog box of the application software.

### 3. Printer Features

**Finisher Bin (DP-C406/C306/C266, DP-C405/C305/C265, DP-C354/C323/C264/C263/C213)/  
Output Tray (DP-8060/8045/8035, DP-8032/8025, DP-3030/2330)**

Specifies the Finisher bin/Output tray.

(For DP-C406/C306/C266, DP-C405/C305/C265, DP-C354/C323/C264/C263/C213)

<b>Automatically Select</b>	Automatically selects one of the following Output Trays.
<b>Inner Tray</b>	Sends printed jobs to the Inner tray.
<b>Outer Tray</b>	Sends printed jobs to the Outer tray. (Selection only displays if the printer is equipped with an Outer tray)
<b>Finisher</b>	Sends printed jobs to the Finisher. (Selection only displays if the printer is equipped with a Finisher)

(For DP-8060/8045/8035)

<b>Bin 1</b>	Sends printed jobs to the Bin 1.
<b>Bin 2</b>	Sends printed jobs to the Bin 2.

**Note:**

- You can only select **Bin 1/ Bin 2** for the output tray.

(For DP-8032/8025, DP-3030/2330)

<b>Auto Selection</b>	Automatically selects one of the following Output Trays.
<b>Inner Tray</b>	Sends printed jobs to the Inner Tray 1 (Lower), Inner Tray 2 (Upper).
<b>Outer Tray</b>	Sends printed jobs to the Outer tray. (Selection only displays if the printer is equipped with an Outer tray)
<b>Finisher</b>	Sends printed jobs to the Finisher. (Selection only displays if the printer is equipped with a Finisher)

**Note:**

- **Finisher Bin/Output Tray** is not available for DP-8020P/8020E, DP-190/180, UF-9000.

#### Sort/Sort Method

Specifies how pages are sorted when multiple copies are printed.

<b>Non Sort (Stack)</b>	Print individual pages in the specified quantity. For example, if you print three copies of a five-page document, the printer prints page 1 three times before printing page 2 and so on.
<b>Sort</b>	Copies are stacked in the order they are printed. Multiple copies are printed in separate sets in the specified quantity. For example, if you print three copies of a five-page document, the printer prints pages 1-5 three times.
<b>Rotate Stack</b>	Each set is rotated and stacked uniformly.
<b>Rotate Sort</b>	Each set is rotated and sorted.
<b>Shift Stack</b>	Each set is shifted and stacked uniformly.
<b>Shift Sort</b>	Each set is shifted and sorted.

**Note:**

- **Shift** is available only if the printer is equipped with a Finisher.
- **Rotate** is available only when **Paper Source** is set to **Automatically Select**.
- **Rotate** requires paper of the specified size to be loaded in two trays, loaded for Landscape and Portrait printing.
- **Shift** is not available for DP-8020P/8020E.

#### Staple

Specifies the position of the staple. Choose the position from

**Left 1, Left 2, Right 1, Right 2, Top 2** or **Saddle Stitch** (For DP-C406/C306/C266, DP-C405/C305/C265, DP-C354/C323/C264/C263/C213, DP-8060/8045/8035)

**Left 1, Right 1** (For DP-8032/8025, DP-3030/2330).

**Note:**

- Only available if the printer is equipped with an optional Finisher.
- Available staple position may be different depending on the Finishers.
- The staple capacity differ depending on the types of Finisher and the paper size. Refer to Specifications in the Operating Instructions (For Basic Function) provided another booklet.
- **Staple** is not available for DP-8020P/8020E, DP-190/180, UF-9000.
- Do not use **Stack, Rotate, and Shift**.
- Some staple positions may not be available with certain punch position combinations. (For example, when selecting **Left1 position** for the staple position and **Right** for the punch position.)

**Punch**

Specifies the hole punch position.

**Note:**

- Only available if the printer is equipped with an optional Finisher and Punch Unit.
- The paper size for which hole punching can be performed differ depending on the types of Finisher.
- **Punch** is not available for DP-8032/8025, DP-3030/2330, DP-8020P/8020E, DP-190/180 and UF-9000.
- Do not use **Shift Sort, Rotate Sort, Rotate Stack, and Shift Stack**.
- Some punch positions may not be available with certain staple position combinations. (For example, when selecting **Left1 position** for the staple position and **Right** for the punch position.)

**Color Mode**

Specifies whether to print in color or grayscale.

<b>Color</b>	Prints documents in color.
<b>Photo Color</b>	Prints photos with the optimal settings.
<b>Grayscale</b>	Prints documents in monochrome.

**Note:**

- **Color Mode** is not available for DP-8060/8045/8035, DP-8032/8025, DP-3030/2330, DP-8020P/8020E, DP-190/180, UF-9000.
- **Photo Color** mode takes more time to print a file.
- Some applications (data) may not be printed out in monochrome even if Black & White is selected under Color in Paper/Quality tab. In this case, change the color mode under Advanced to Black & White before printing.

**Color Management**

Specifies color settings to fine-tune color reproduction.

<b>Device Color</b>	Choose this option to adjust the original color settings.
<b>None</b>	Select <b>None</b> when using ICM or application's color management.
<b>SWOP</b>	Simulates printing to a standard American offset press.
<b>Euroscale</b>	Simulates printing to an European offset press.

**Note:**

- **Color Management** is not available for DP-8060/8045/8035, DP-8032/8025, DP-3030/2330, DP-8020P/8020E, DP-190/180, UF-9000.

**Device Color Space for Text / Graphics / Image**

Specifies color reproduction and Black output for text, graphics and images.

<b>Standard Profile with Black Gray</b>	Print with color reproduction close to standard color monitors. Use only Black to reproduce intermediate shades of gray.
<b>Vivid Profile with Black Gray</b>	Print with more vivid color reproduction. A good choice for line art and graphics. Use only Black to reproduce intermediate shades of gray.
<b>Standard Profile with CMYK Gray</b>	Print with color reproduction close to standard color monitors. Use the four colors of CMYK to reproduce intermediate shades of gray.
<b>Vivid Profile with CMYK Gray</b>	Print with more vivid color reproduction. A good choice for line art and graphics. Use the four colors of CMYK to reproduce intermediate shades of gray.

**Note:**

- **Device Color Space for Text/Graphics/Image** is not available for DP-8060/8045/8035, DP-8032/8025, DP-3030/2330, DP-8020P/8020E, DP-190/180, UF-9000.

**Toner Save (Available for DP-C406/C306/C266, DP-C405/C305/C265, DP-C354/C323/C264/C263/C213, DP-190/180, UF-9000)**

Choose **On** to conserve toner. The overall effect is lighter, so this feature is recommended for test printing or producing documents for which appearance is not critical.

**Brightness (Available for DP-C406/C306/C266, DP-C405/C305/C265, DP-C354/C323/C264/C263/C213)**

Color brightness is adjustable. 100% is normal brightness. Brightness darkens as the numerical value grows.

**Secure**

Printed documents can be saved on the printer’s hard disk drive (HDD) if the printer is equipped with one.

Saved documents can be printed from the printer’s control panel. See “Mailbox Printing” on page 26.

<b>None</b>	Mailbox printing is not applied.
<b>Check Then Print</b>	Allows you to print one proof set, before proceeding to print a large multi-set with various settings. The documents data will be deleted from the printer after printing.
<b>Mailbox</b>	Saves print data in the printer, in the mailbox specified by the <b>User ID</b> . The <b>User ID</b> must be entered to print documents saved in Mailbox. The document data will remain in the printer until it is deleted.
<b>Secure Mailbox</b>	Saves print data in the printer, in the mailbox specified by the <b>User ID</b> . The <b>User ID</b> and <b>Password</b> must be entered to print confidential documents saved in Secure Mailbox. The document data will remain in the printer until it is deleted.

**Note:**

- Using Mailbox printing requires that the **Hard Disk Drive Unit** is installed in the printer.
- **Check Then Print** function is not available for DP-8060/8045/8035, DP-8032/8025, DP-3030/2330, DP-8020P/8020E, DP-190/180, UF-9000.

**Print Blank Pages**

Selecting this option will enable printing Blank pages.

**Note:**

- The **Print Blank Pages** is not selectable if the **Print on Both Sides** was enabled on the **Layout** tab.

**Front/Back Cover or Front/Back Cover Page**

You can configure the settings for cover pages. To use a cover page, select **Front Cover/Front Cover Page** or **Back Cover/Back Cover Page**, and specify the paper source to use for the Front and Back covers.

**Duplex Notice**

Check whether “2-Sided Print” is printed on the footer of 1st page when printing with 2-Sided Page style.

**Note:**

- This option is available only for DP-8032/8025, DP-3030/2330.
- The position where the Duplex Notice is to be printed may differ depending on the Paper Orientation settings.

# Job Status Utility

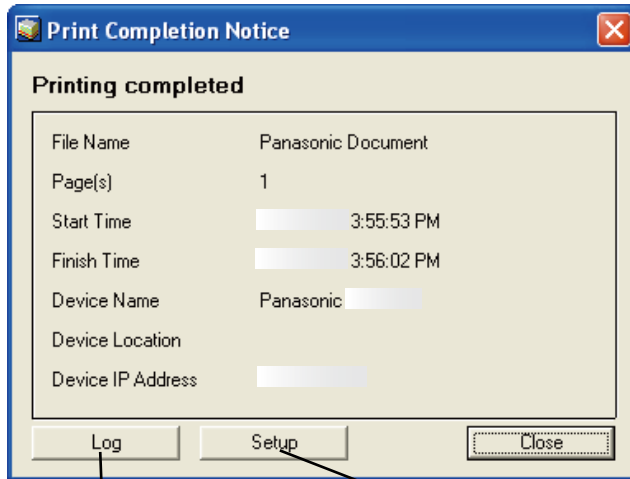
The **Job Status Utility** software will display the popup notice on your PC screen when finishing the Print, PC Fax, Copy, and Fax jobs.

The information displayed in the **Completion Notice** vary according to the type of job being performed.

## ■ Completion Notice

After a job completes, you will receive a notice like below on the PC screen.

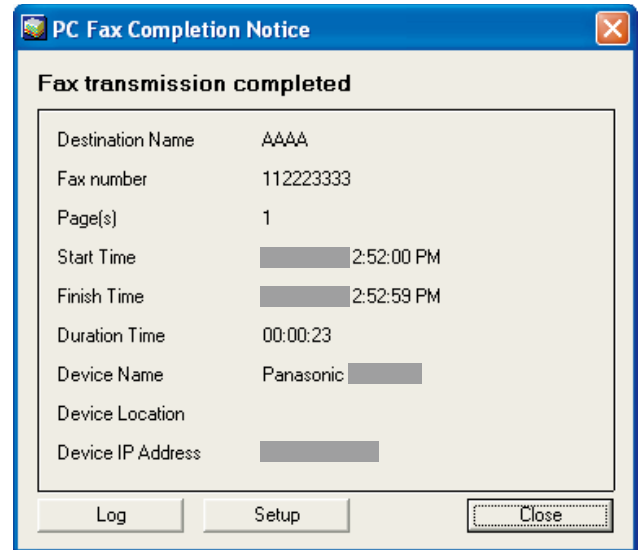
### Print Completion Notice



Opens **Log** window.


Opens **Setup** window.

### PC Fax Completion Notice



## ■ Job Status Utility Log


To help you maintain records of the documents you sent or print, the **Job Status Utility** is equipped to list the transaction result as a Log file. The latest 100 transactions are recorded on the log.

To start **Job Status Utility Log** window, click  button on the **Completion Notice** window or right-click the Job Status Utility icon  on the taskbar, and then select the **Log** from the menu.



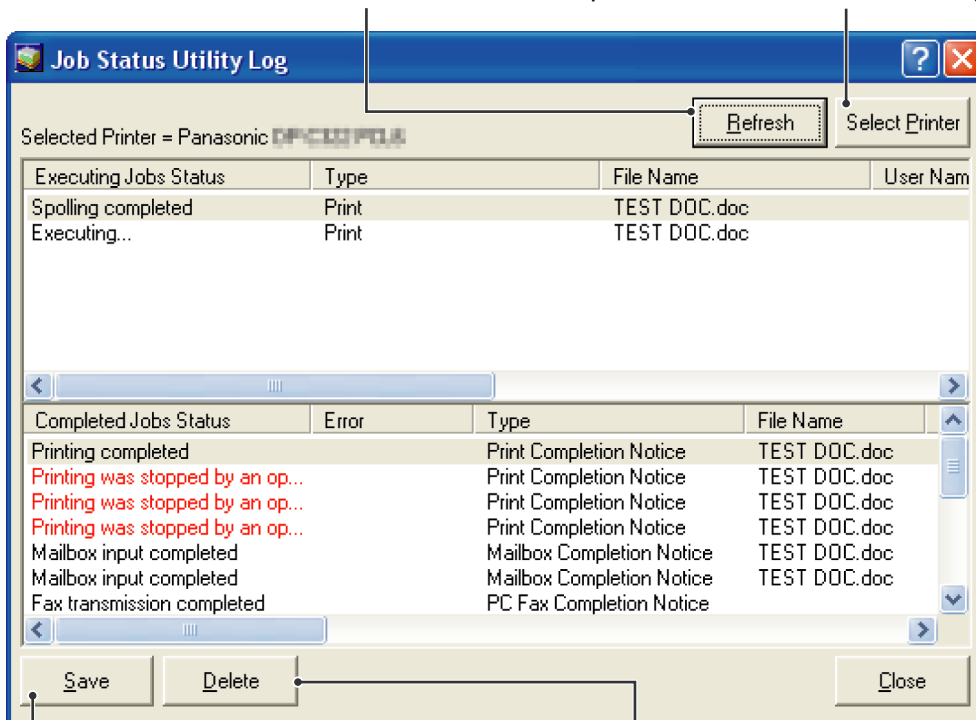
The **Job Status Utility Log** window appears.

**Note:**

When the Job Status Utility icon  is not on the taskbar, select **All Programs (Programs for Windows 2000) → Panasonic → Job Status Utility → Job Status Utility** from the **Start** menu to activate the Job Status Utility icon.

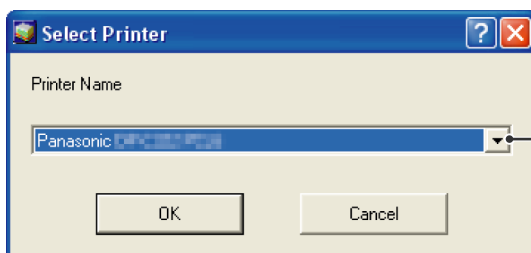
Refreshes the Job Status Window

Opens the Select Printer Window (See Below)



Saves the displayed Log as a CSV format file.  
(Only for Completed Job Status)

Deletes the Selected Print Jobs, or  
all Completed Jobs in the Log.



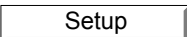

Chooses the printer name to monitor.

**NOTE**

Completion Notice does not appear if the device is connected with an USB or parallel cable.

## ■ Setup


You may set the condition to display the **Completion Notice** window after completion of the job.

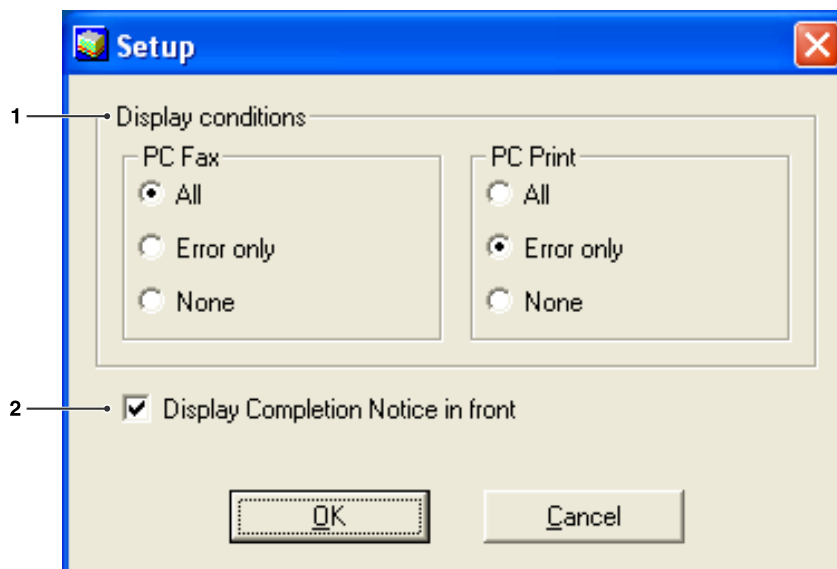
To start **Setup** window, click  button on the **Completion Notice** window, or right-click the Job Status Utility icon  on the taskbar, and then select the **Setup** from the menu.



The **Setup** window appears.

### Note:

When the Job Status Utility icon  is not on the taskbar, select **All Programs (Programs for Windows 2000)** → **Panasonic** → **Job Status Utility** → **Job Status Utility** from the **Start** menu to activate the Job Status Utility icon.



### 1. Display Conditions

Selects the condition to display the **Completion Notice** window.


<b>All</b>	Always display after each job completion.
<b>Error only</b>	Displays when an error occurs.
<b>None</b>	Do not display.

### 2. Display Completion Notice in front

Specify whether the **Completion Notice** window is displayed on the front of other windows.

When this option is not selected, the **Completion Notice** window is displayed in the back of other windows.

When the **Completion Notice** is displayed, the  icon on the taskbar blinks.

Click the  icon to bring the **Completion Notice** to the front of other windows.

Information displayed in the Completion Notice and the Job Status Utility Log. (See page 21)

<b>Status</b>	Indicates the job status, such as completed, canceled, etc...
<b>Error</b>	Indicates information on an occurred error, such as information code, error message, etc...
<b>Type</b>	Indicates the type of job. The Completion Notice is used in common with PC Fax job, PC Print job, Copy job, and Fax job (Sent from the device).
<b>File Name</b>	Indicates the PC printed file name.
<b>Page(s) (Print)</b>	Indicates the number of pages of the PC Print job, and Copy job.
<b>Page(s) (Fax)</b>	Indicates the number of pages of the PC Fax job, and Fax job (Sent from the device).
<b>Start Time</b>	Indicates the start date and time of the job. The format of the date and time depends on the setting of your Windows PC.
<b>Finish Time</b>	Indicates the finish date and time of the job. The format of the date and time depends on the setting of your Windows PC.
<b>Duration Time</b>	Indicates the duration time of the job. (hh:mm:ss)
<b>Fax Number/Email Address</b>	Indicates the Fax Number, or Email Address (Fax job only) of the Fax transmission.
<b>Destination Name</b>	Indicates the registered Destination Name in the fax driver's phonebook when using the phonebook for transmitting a document.
<b>Device Name</b>	Indicates the Device Name registered in the device that is used for the fax transmission.
<b>Device Location</b>	Indicates the Device Location registered in the device that is used for the fax transmission.
<b>Device IP Address</b>	Indicates the Device IP Address that is used for the fax transmission.
<b>User Name</b>	Indicates the logon User Name which is executing the current job.
<b>Computer Name</b>	Indicates the Computer Name/ IP Address that is executing the current job.

## Mailbox

To save printed documents into the printer's mailbox for later printing, the printer must be equipped with the optional Hard Disk Drive. Saved documents can be printed from the printer's control panel. The following three types of mailbox printing is available.

**Check then Print** : Saves print data in the printer, in the mailbox specified by the **User ID**. Allows you to print one proof set, before proceeding to print a large multi-set with various settings. The document data will be deleted from the printer after printing.

**Mailbox** : Saves print data in the printer, in the mailbox specified by the **User ID**. The **User ID** must be entered to print documents saved in the Mailbox. The document data will remain in the printer until it is deleted.

**Secure Mailbox** : Saves print data in the printer, in the mailbox specified by the **User ID**. The **User ID** and **Password** must be entered to print confidential documents saved in the Secure Mailbox. The document data will remain in the printer until it is deleted.

The PS Driver Security Utility adds User ID, Password, and Department Code information to print data that is printed using the PS Driver. This utility allows users to take advantage of the print job statistics, security and other advanced Panasonic printer functions. Refer to "Operating Instructions (Setting Up PostScript3 Printer Driver)" for setting the PS Driver Security Utility.

**Note:**

- **Check then Print** function is not available for DP-8060/8045/8035, DP-8032/8025, DP-3030/2330, DP-8020P/8020E, DP-190/180, UF-9000.

**NOTE**

- This feature is available if the **Hard Disk Drive Unit** is installed in the printer unit, and the **Hard Disk Drive Unit** is set to **Installed** in **Device Settings** or **Device Options** tab of the printer driver.
- Turning the Power Switch **OFF** while a print file is being stored into the Mailbox/Secure Mailbox may cause all files in it to be lost.

## ■ Saving a Print Job (from a PC)

- 1 Select **Print** in the **File** menu of the application.
- 2 Click the  button in the **Print** dialog box.
- 3 Click the  or  tab, and then click Printer Feature.
- 4 Select types of mailbox printing method in the **Secure**.

**Note:**

*This feature is available if the **Hard Disk Drive Unit** is installed in the printer unit, and the **HDD Unit** is set to **Installed** in Device Settings or Device Options tab of the printer driver.  
Saves print data in the printer, in the mailbox specified by the **User ID**.*

- 5 Click the  button, and then the  button to save the document data.

# Mailbox Printing

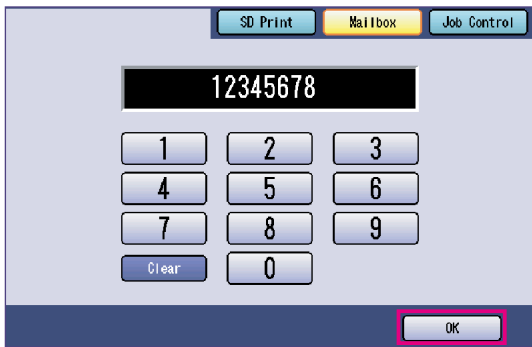
(For DP-C406/C306/C266, DP-C405/C305/C265, DP-C354/C323/C264/C263/C213)

## ■ Printing or Deleting Mailbox Data

- 1 Press the **Print** key on the Control Panel if set to other function mode.
- 2 **Print** display appears on the printer control panel. Enter the mailbox User ID number (up to 8-digit).

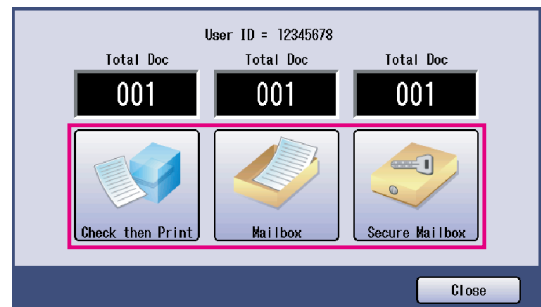


- 3 Select **"OK"** button.



- When print data is saved in only one of the mailboxes (Check then Print, Mailbox, or Secure Mailbox), the mailbox is opened. In this case, go to step 5.

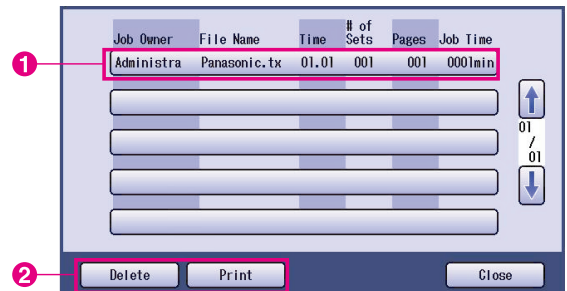
- 4 The total number of saved jobs in each mailbox is displayed. Select the desired mailbox.



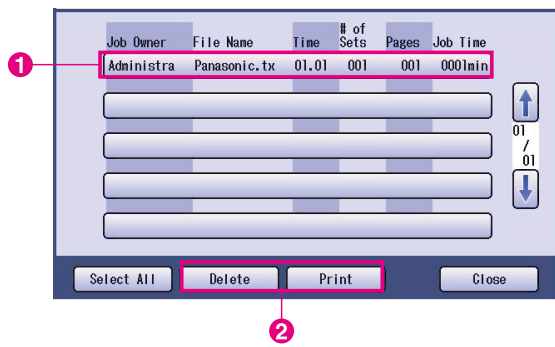
- 5 The display shows the saved print jobs in the selected mailbox. Choose the job you want to print, and select **"Print"** or **"Delete"**.

<b>Select All button</b>	Selects all print jobs. (Mailbox only)
<b>Close button</b>	Closes the mailbox display.

### Check then Print:

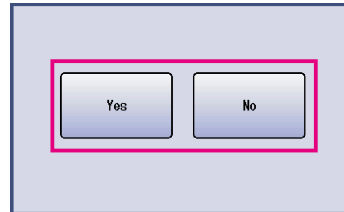


**Mailbox:**

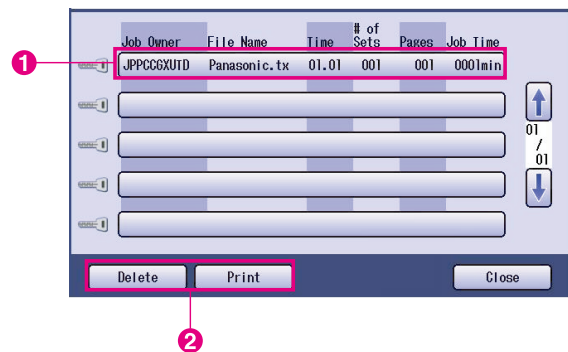


**7 Check then Print, Mailbox, or Secure Mailbox**

Select whether to delete the print job after printing.

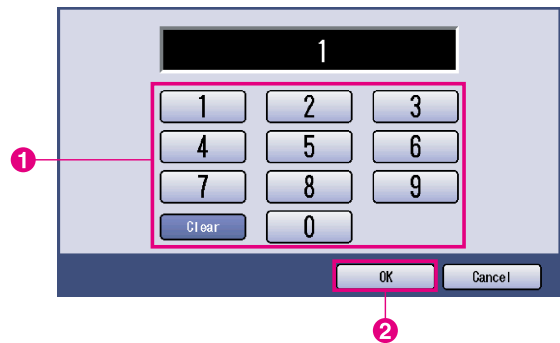


**Secure Mailbox:**



**8 Check then Print only**

The number of copies is displayed. Enter the number of copies, and select "OK" to start printing.



**6 Secure Mailbox only**

Password display appears if **Secure Mailbox** is selected.

Enter the **Password** (4-digit(numeric) or 8-16 characters(alphanumeric)), and then select "OK".

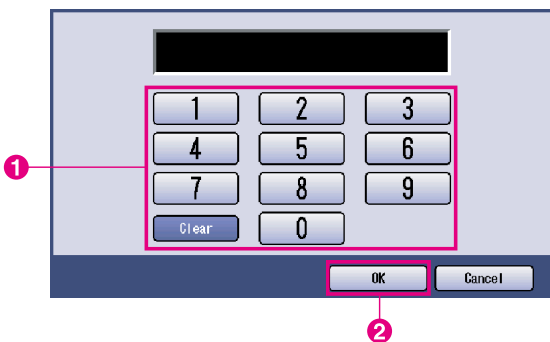
<DP-C406/C306/C266>



**Note:**

After having finished printing the **Check then Print** job, it will be deleted from the printer's hard disk drive.

<Other models>



## Job Control (Output Queue) (For DP-C406/C306/C266, DP-C405/C305/C265, DP-C354/C323/C264/C263/C213)

The **Job Control** menu of the printer control panel contains four buttons with the following functions.

**On Line** button : Turns the printer on-line.

**Off Line** button : Turns the printer off-line.

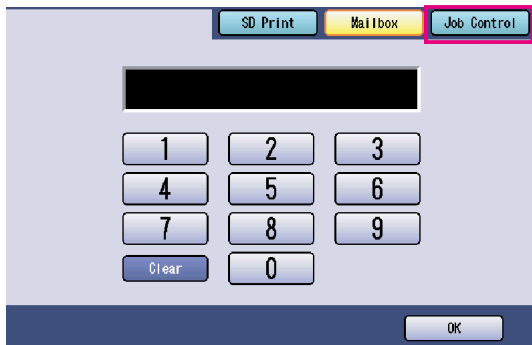
**Cancel Print** button : Stops the current print job, and deletes the job from the output queue.

**Output Queue** button : Checks the current print jobs.

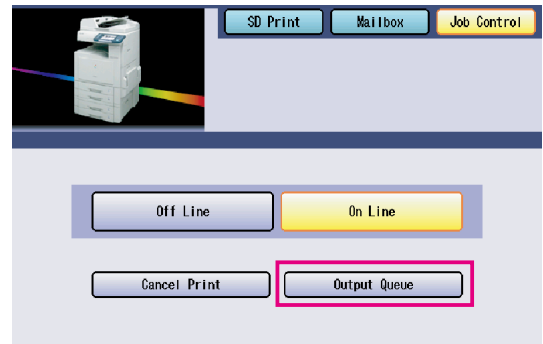
This section describes how to use “**Output Queue**” to perform operations on the print jobs in the output queue.

**1** Press the **Print** key on the Control Panel if set to other function mode.

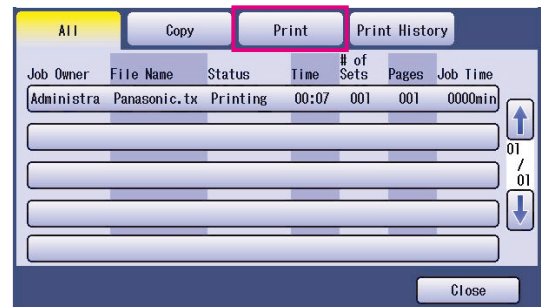
**2** **Print** display appears on the printer control panel.  
Select “**Job Control**”.



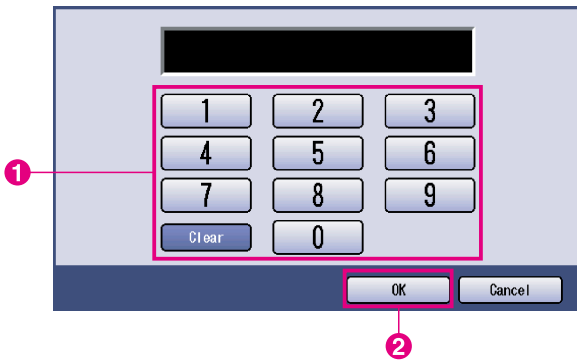
**3** Select “**Output Queue**”.



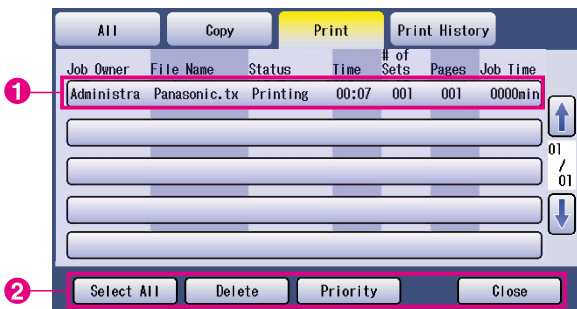
**4** Displays a list of all pending output jobs that are usually processed on a first come first served basis.  
Select “**Print**”.



- 5 Enter the password (4-digit), and then select “OK”.



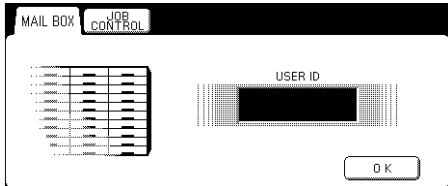
- 6 Displays a list of current, and pending **Print** jobs. Select the print job you want to manage, and choose one of the following tasks to perform.



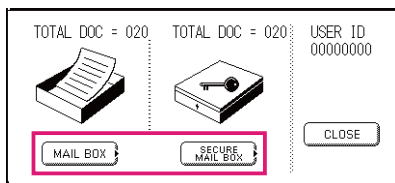
<b>Select All button</b>	Selects all print jobs.
<b>Delete button</b>	Deletes the selected job from the <b>Output Queue</b> .
<b>Priority button</b>	Set or change the printing order of the selected job(s) in the <b>Output Queue</b> .
<b>Close button</b>	Close the <b>Output Queue</b> display.

# Mailbox Printing (For DP-8060/8045/8035, DP-8032/8025, DP-3030/2330)

- 1 Press the **Print** key on the Control Panel.
- 2 **Print** display appears on the Control panel. Enter the mailbox User ID number (up to 8-digit).



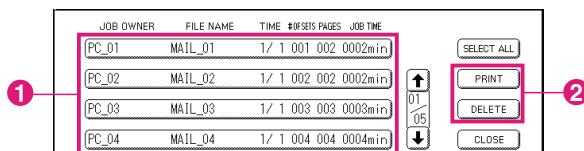
- 3 Select **"OK"**.
- 4 The total number of saved jobs in each mailbox is displayed. Select the desired mailbox.



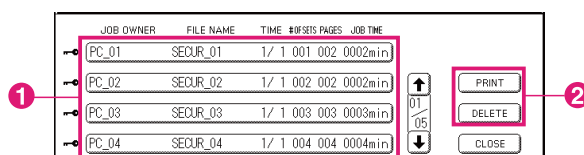
- 5 The display shows the saved print jobs in the selected mailbox. Choose the job you want to print, and select **"PRINT"** or **"DELETE"**.

<b>SELECT ALL button</b>	Selects all print jobs. (Mailbox only)
<b>CLOSE button</b>	Closes the mailbox display.

### Mailbox:



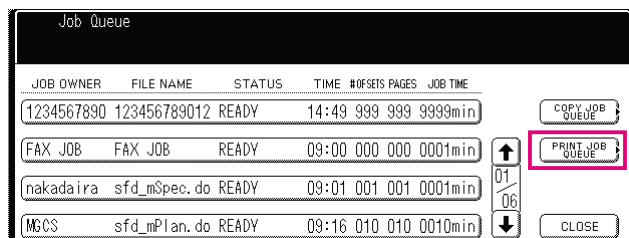
### Secure Mailbox:



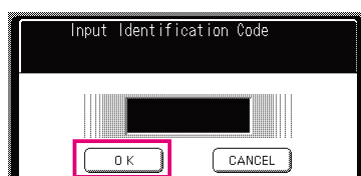
- 6 **Secure Mailbox only**  
**Password** display appears if **Secure Mailbox** is selected. Enter the **Password**, and then select **"OK"**.

## Job Queue (For DP-8060/8045/8035, DP-8032/8025, DP-3030/2330)

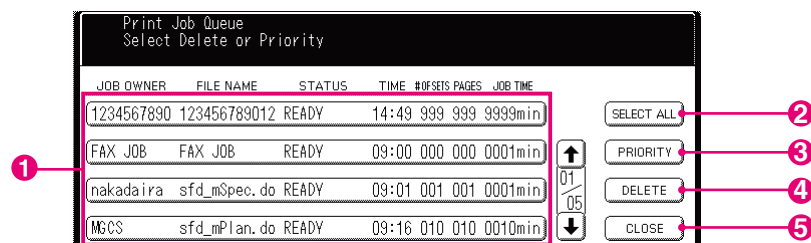
- 1 Press the **Print key** on the Control Panel , then select the “**PRINT JOB QUEUE**” in the **Job Control Tab**.



- 2 Enter the password (4-digit), and then select “**OK**”.



3



### 1. Print Jobs

Indicates all current and/or pending print jobs.

### 2. SELECT ALL button

Selects all print jobs.

### 3. PRIORITY button

Set or change the print job(s) priority.

### 4. DELETE button

Deletes print job(s).

### 5. CLOSE button

Closes this screen.

# Mailbox Printing (For DP-8020P/8020E, DP-190/180, UF-9000)

Follow the procedure below to print a file from a Mailbox on your machine.

- 1 Print a file to the Mailbox using the User ID.  
(Up to 20 mailboxes per each User ID)
- 2 Press **PRINT**.
- 3 Press **FUNCTION** ① **SET**.
- 4 Enter the User ID (up to 8-digit) from the keypad.  
(Ex: 12345678)
- 5 Press **SET**.
- 6 **▲** or **▼** repeatedly until the display shows the file you want to print.
- 7 Press **SET**.
- 8 ① to print the displayed file.  
② to print all files for the User ID.
- 9 Your machine will print the file. The file is automatically deleted after printing.

PRINTER ON LINE

ENTER USER ID  
■

ENTER USER ID  
12345678

USE **▼** OR **▲** TO SCROLL  
TOTAL DOC=nn

(Panasonic) 10:11  
(Pana.doc)

1:PRINT 2:ALL PRINT  
3:DELETE 4:ALL DEL.

\* PRINTING \*  
PC DATA

PRINTER ON LINE

## ■ Deleting from the Mailbox

Follow the procedure below to delete a file from the Mailbox.

- |   |  |
|---|--|
| <p><b>1</b> Press <span style="border: 1px solid black; padding: 2px 10px;">PRINT</span>.</p>   | PRINTER ON LINE                            |
| <p><b>2</b> Press <span style="border: 1px solid black; padding: 2px 10px;">FUNCTION</span> ① <span style="border: 1px solid black; padding: 2px 10px;">SET</span>.</p> | ENTER USER ID<br>■                         |
| <p><b>3</b> Enter the User ID (up to 8-digit) from the keypad.<br/>(Ex: 12345678)</p>   | ENTER USER ID<br>12345678                  |
| <p><b>4</b> Press <span style="border: 1px solid black; padding: 2px 10px;">SET</span>.</p>   | USE ∨ OR ^ TO SCROLL<br>TOTAL DOC=nn       |
| <p><b>5</b> ▲ or ▼ repeatedly until the display shows the file you want to delete.</p>  | (Panasonic) 10:11<br>(Pana.doc)            |
| <p><b>6</b> Press <span style="border: 1px solid black; padding: 2px 10px;">SET</span>.</p>   | 1:PRINT 2:ALL PRINT<br>3:DELETE 4:ALL DEL. |
| <p><b>7</b> ③ to delete the displayed file.<br/>④ to delete all files for the User ID.</p>  | DELETE DOCUMENT?<br>1:YES 2:NO             |
| <p><b>8</b> Press ① <span style="border: 1px solid black; padding: 2px 10px;">STOP</span>.</p>  | PRINTER ON LINE                            |

**Note:**

1. Turning the Power Switch OFF while a print file is being stored (DATA indicator lamp is flashing) into the Mailbox or Secure Mailbox may cause all files to be lost.
2. When using the Mailbox or Secure Mailbox feature, there is a limitation of 20 mailboxes per User ID. If more than 20 print jobs are sent to an User ID, jobs will be deleted from the memory. Jobs will also be deleted if the Hard Disk Drive Unit is full.

# Secure Mailbox (For DP-8020P/8020E, DP-190/180, UF-9000)

Follow the procedure below to print a file from a Secure Mailbox on your machine.

**1** Print a file to the Secure Mailbox using the User ID and a Password. (Up to 20 mailboxes per each User ID)

**2** Press .

```
PRINTER ON LINE
```

**3** Press  ② .

```
ENTER USER ID
█
```

**4** Enter the User ID (up to 8-digit) from the keypad.  
(Ex: 12345678)

```
ENTER USER ID
12345678
```

**5** Press .

```
USE ∨ OR ^ TO SCROLL
TOTAL DOC=nn
```

**6**  or  repeatedly until the display shows the file you want to print.

```
(Panasonic) 10:11
(Pana.doc)
```

**7** Press .

```
ENTER PASSWORD
█
```

**8** Enter the Password (4-digit) from the keypad.

```
ENTER PASSWORD
****
```

**9** Press .

```
SECURE MAILBOX
1:PRINT 2:DELETE
```

**10** Press ①.

```
* PRINTING *
PC DATA
```

**11** Your machine will print the file. The file is automatically deleted after printing.

```
PRINTER ON LINE
```

## ■ Deleting from the Secure Mailbox

Follow the procedure below to delete a file from a Secure Mailbox on your machine.

- |  |  |
|--|--|
| <p><b>1</b> Press <span style="border: 1px solid black; padding: 2px 10px;">PRINT</span>.</p>  | PRINTER ON LINE  |
| <p><b>2</b> Press <span style="border: 1px solid black; padding: 2px 10px;">FUNCTION</span> <sup>②</sup> <span style="border: 1px solid black; padding: 2px 10px;">SET</span>.</p> | ENTER USER ID<br><span style="display: inline-block; width: 10px; height: 10px; background-color: black; vertical-align: middle;"></span>  |
| <p><b>3</b> Enter the User ID (up to 8-digit) from the keypad.<br/>         (Ex: 12345678)</p>   | ENTER USER ID<br>12345678  |
| <p><b>4</b> Press <span style="border: 1px solid black; padding: 2px 10px;">SET</span>.</p>  | USE $\vee$ OR $\wedge$ TO SCROLL<br>TOTAL DOC=nn   |
| <p><b>5</b> <math>\blacktriangle</math> or <math>\blacktriangledown</math> repeatedly until the display shows the file you want to delete.</p>                                     | (Panasonic) 10:11<br>(Pana.doc)  |
| <p><b>6</b> Press <span style="border: 1px solid black; padding: 2px 10px;">SET</span>.</p>  | ENTER PASSWORD<br><span style="display: inline-block; width: 10px; height: 10px; background-color: black; vertical-align: middle;"></span> |
| <p><b>7</b> Enter the Password (4-digit) from the keypad.</p>  | ENTER PASSWORD<br>****   |
| <p><b>8</b> Press <span style="border: 1px solid black; padding: 2px 10px;">SET</span>.</p>  | SECURE MAILBOX<br>1:PRINT 2:DELETE   |
| <p><b>9</b> Press <sup>②</sup>.</p>  | DELETE DOCUMENT?<br>1:YES 2:NO   |
| <p><b>10</b> Press <sup>①</sup> <span style="border: 1px solid black; padding: 2px 10px;">STOP</span>.</p>   | PRINTER ON LINE  |

# Job Queue (For DP-8020P/8020E, DP-190/180, UF-9000)

Follow the procedure below to verify the print jobs.

1 Press .

PRINTER ON LINE

2 Press  ③ .

3:JOB QUEUE ?  
PRESS SET TO SELECT

3 Press .

USE  $\nabla$  OR  $\wedge$  TO SCROLL  
TOTAL DOC=nn

4  $\blacktriangle$  or  $\blacktriangledown$  repeatedly until the display shows the file you want to print.

(Panasonic) 10:11  
(Pana.doc)

5 Press .

ENTER PASSWORD

6 Enter the Password (3-digit) from the keypad.

ENTER PASSWORD  
\*\*\*

7 Press .

1:PRIORITY 2:DELETE  
3:DELETE ALL

8 ① to change the print job priority.  
② to delete the print file.  
③ to delete all print files.  
Ex: ②

DELETE DOCUMENT?  
1:YES 2:NO

9 Press ① .

PRINTER ON LINE

# Memo

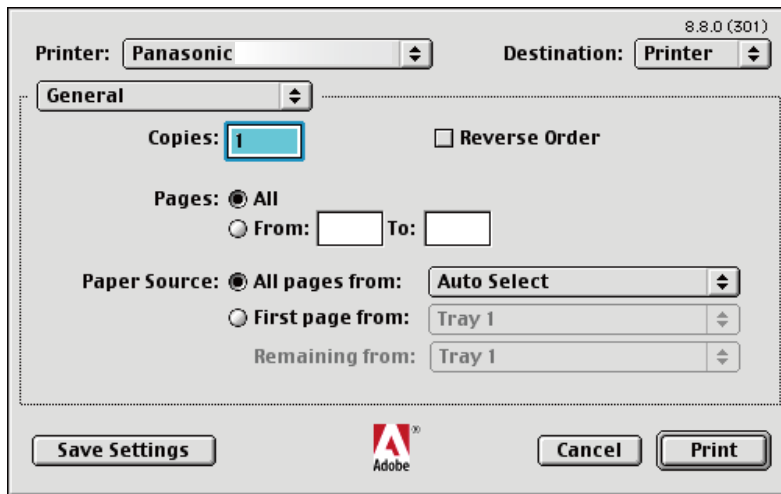
# Printing from Macintosh Applications

## Basic Operation

To print using the Macintosh application, select **Print** from the **File** menu, and open the following print dialog box. Functions appear on the print dialog box may differ depending on the application / operating system you are using.

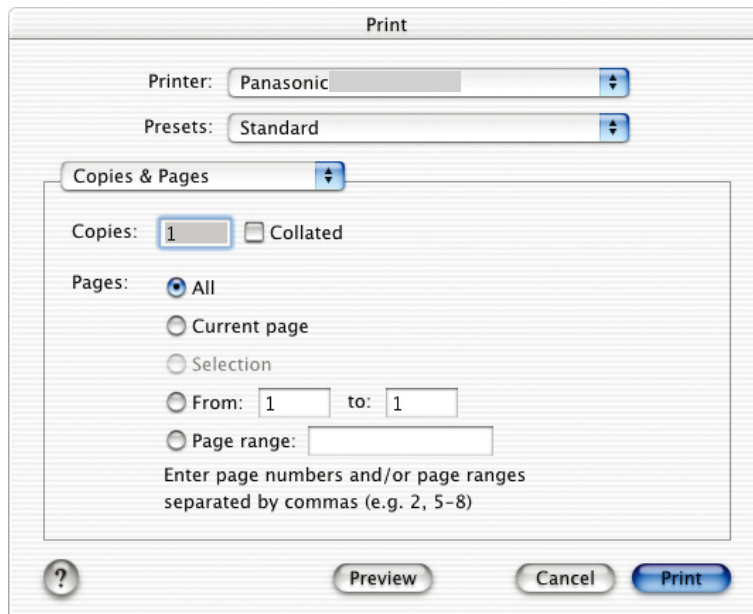
### For OS 8.6/9.x

- Click the **Save Settings** button to save the current settings for the default value.

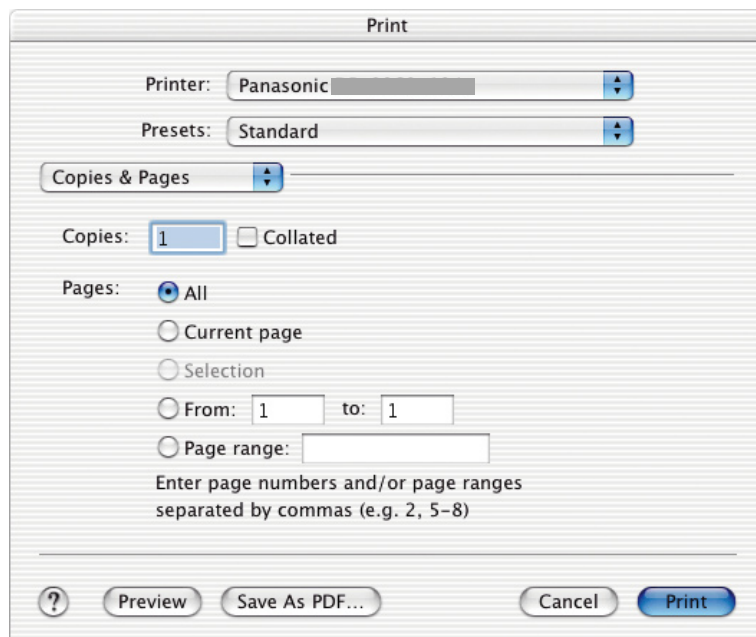


## For OS X

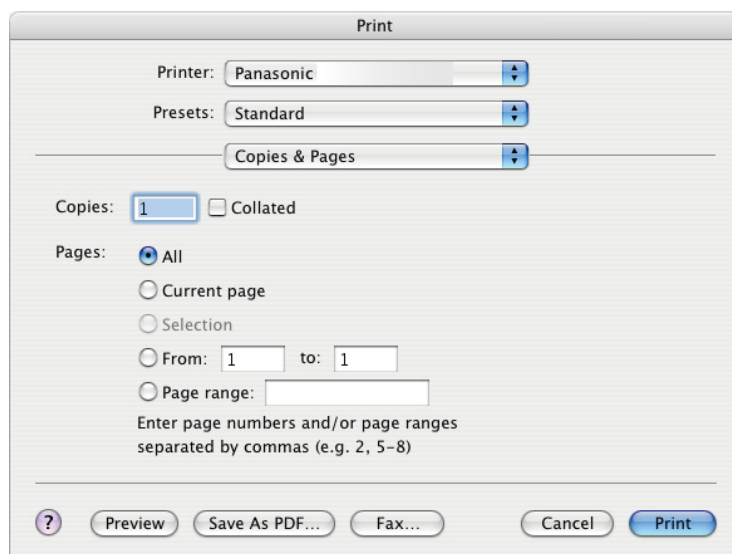
- Select **Save As.../Save Custom Setting** (For OS X 10.1) from the **Presets** to save the current settings for the default value.



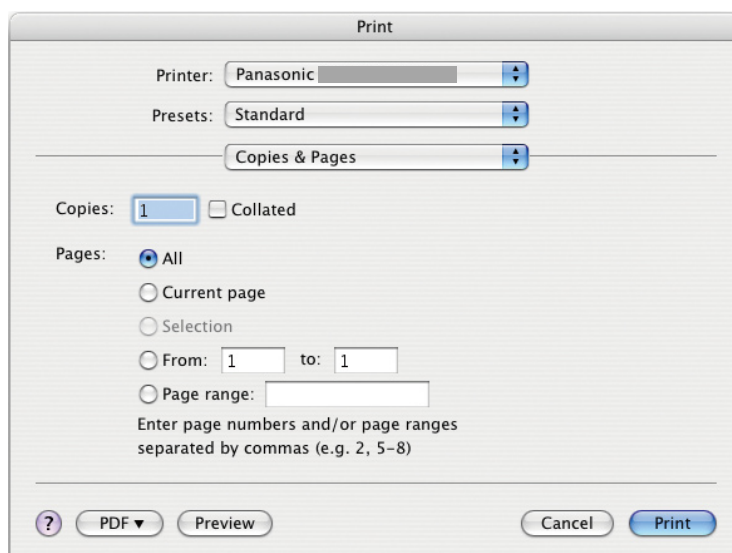
(OS X 10.1)



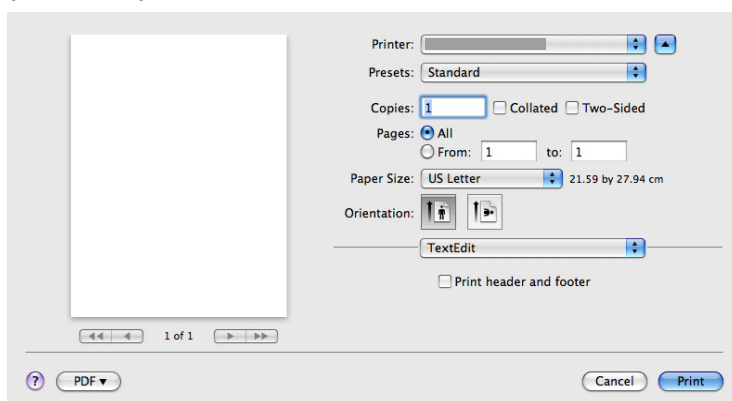
(OS X 10.2)



(OS X 10.3)



(OS X 10.4)



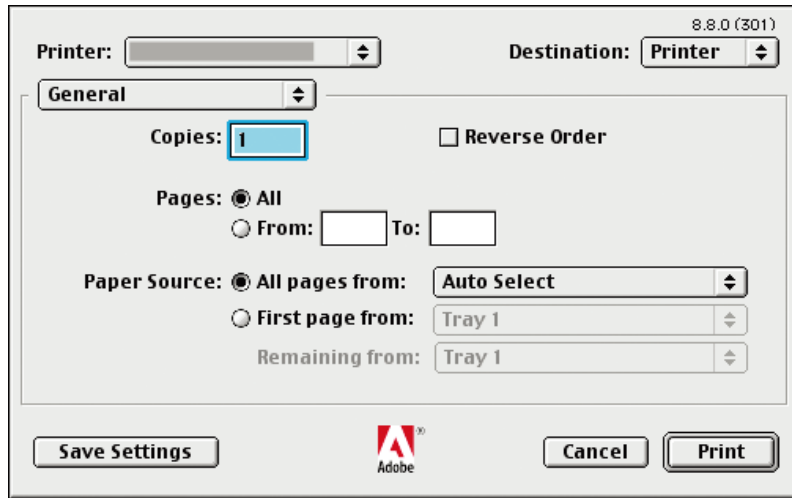
(OS X 10.5)

**Note:**

- When multiple printers are installed in your PC, select the desired printer in the **Printer** menu on top of the screen.
- For some applications, the **Paper Feed** setting may not be reflected on the actual output.

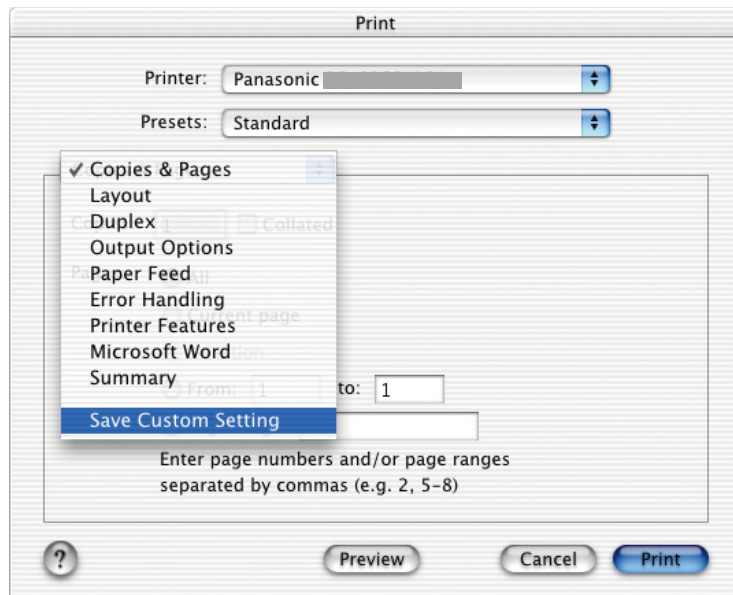
**For OS 8.6/9.x**

- Click the **Save Settings** button to save the current settings for the default value.

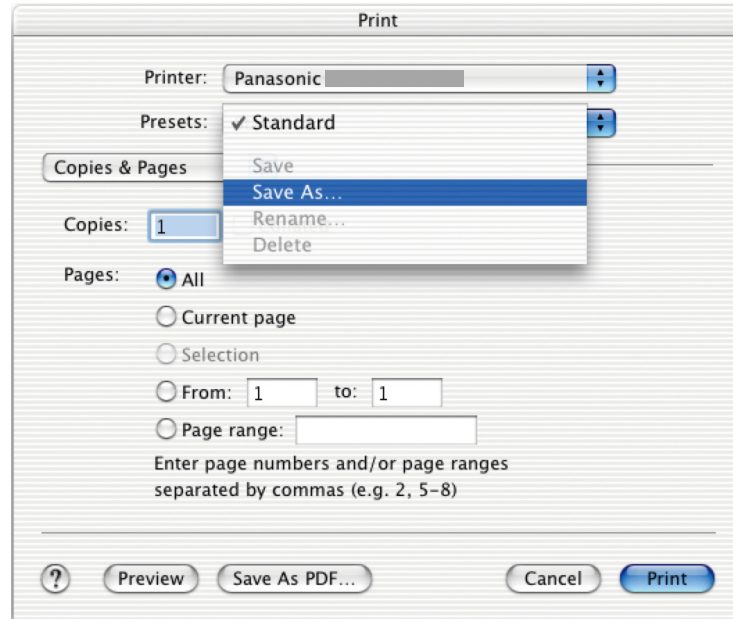


**For OS X**

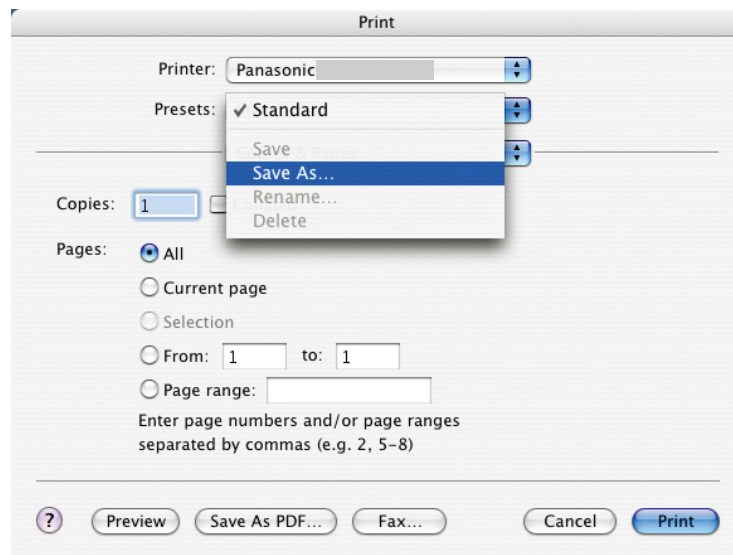
- Select **Save As.../Save Custom Setting** (For OS X 10.1) from the **Presets** to save the current settings for the default value.



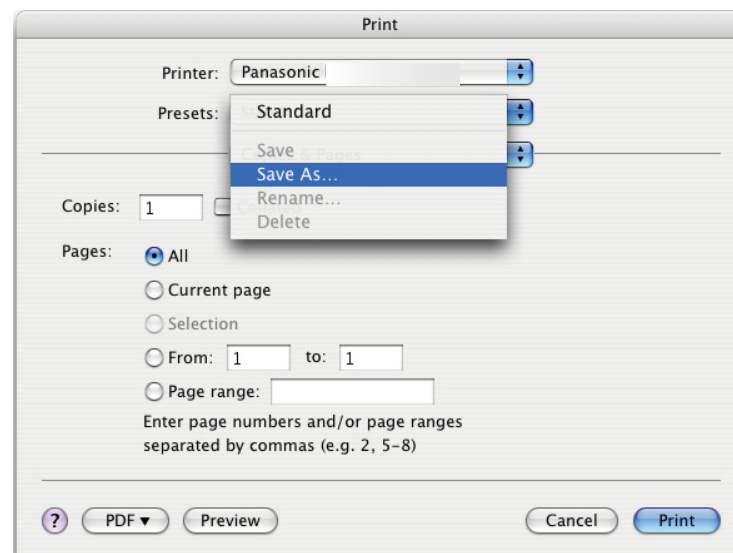
(OS X 10.1)



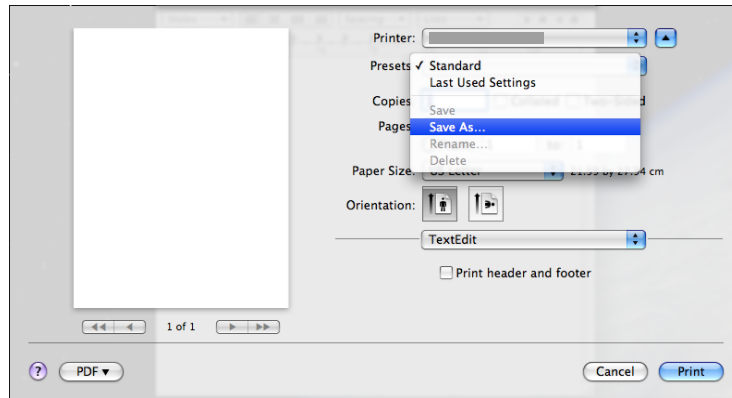
(OS X 10.2)



(OS X 10.3)



(OS X 10.4)



(OS X 10.5)

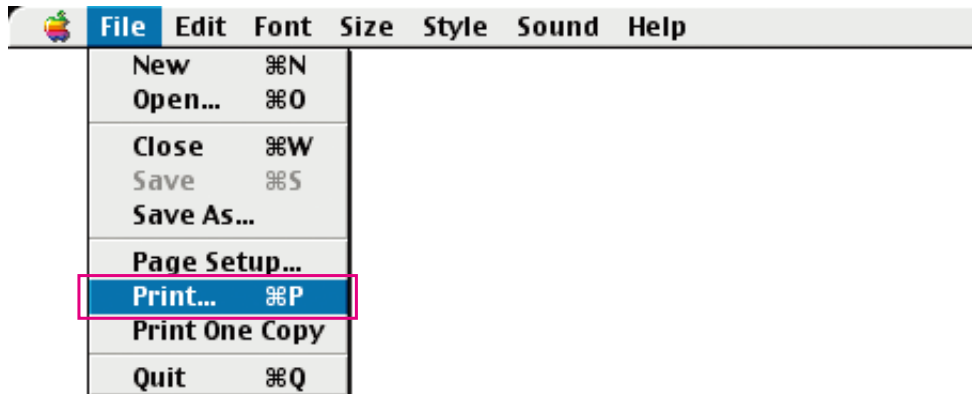
- Click the **Preview** button to check that the print options are set correctly.
- Click the **Save As PDF** / **PDF** button to save the document as PDF file instead of printing on sheets of paper.

# Configuring the Printer Driver Settings (For Mac OS 8.6/9.x)

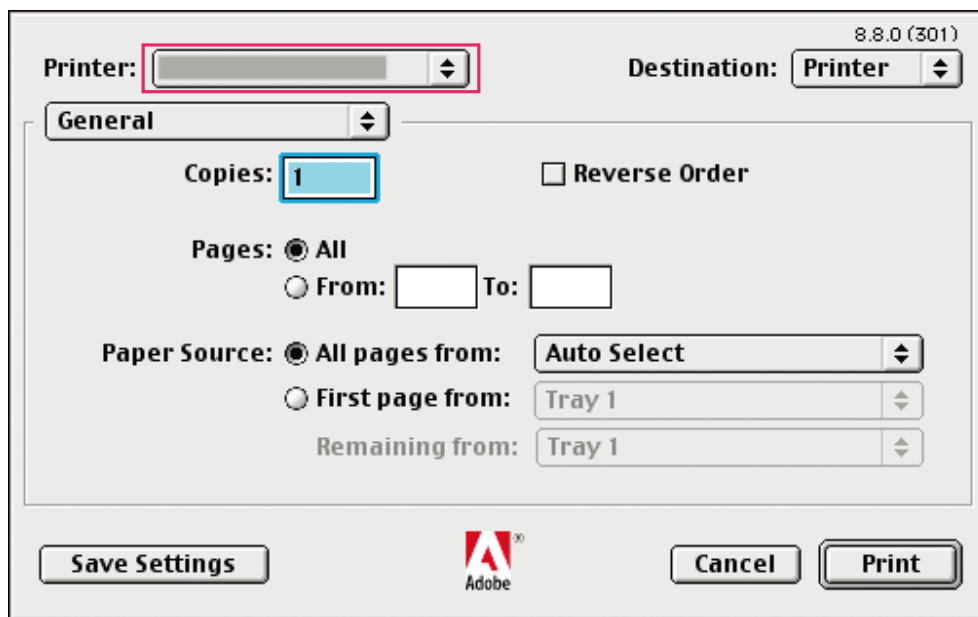
## ■ Opening the Print Dialog Box

To change the printer settings, open the dialog box for the printer properties by performing the following steps.

- 1 Select the **File** menu > **Print**.



- 2 Select the **Printer**.



**3** In the print dialog box, you will see a number of titles in the pop-up menu. Select the desired menu title(s), and configure the properties as necessary. Click the **Save Settings** button to save the current settings for the default values.

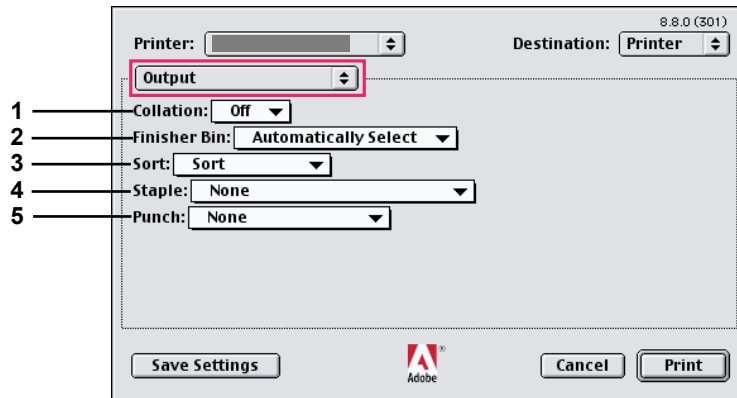
**Output / Quality / Printer Specific Options menus:**

These menus are **Panasonic Printing System** associated settings. For additional details, refer to the page(s) relevant to the subject you are interested in.

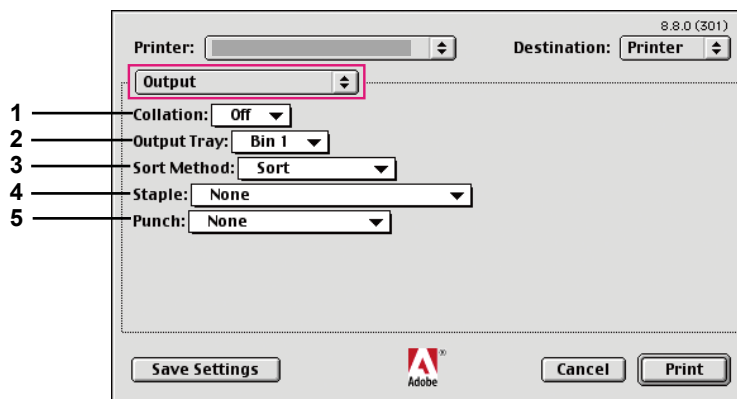
- Output Menu : See page 46
- Quality Menu : See page 49
- Printer Specific Options Menu : See page 53

## ■ Output Menu

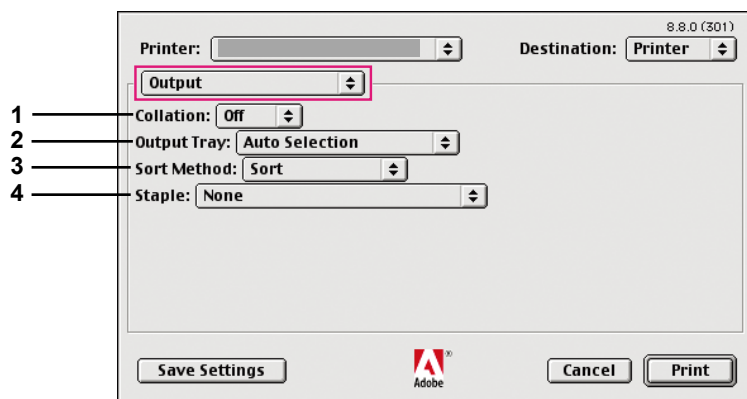
Output menu is used for configuring output settings.



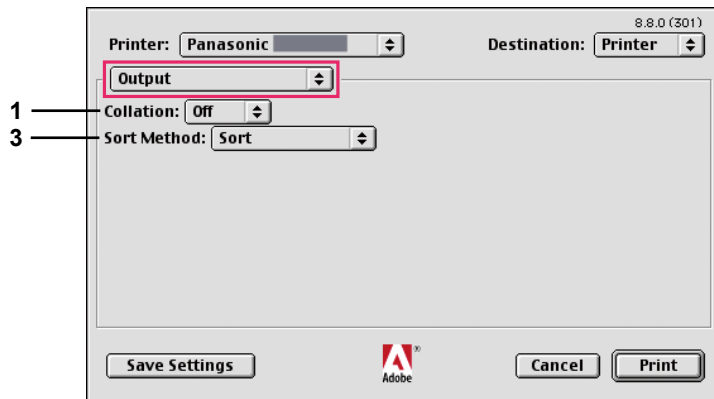
(For DP-C406/C306/C266, DP-C405/C305/C265,  
DP-C354/C323/C264/C263/C213)



(For DP-8060/8045/8035)



(For DP-8032/8025, DP-3030/2330)



(For DP-8020P/8020E, DP-190/180, UF-9000)

### 1. Collation

Specifies the Off/On for Collation.

### 2. Finisher Bin (DP-C406/C306/C266, DP-C405/C305/C265, DP-C354/C323/C264/C263/C213)/ Output Tray (DP-8060/8045/8035, DP-8032/8025 and DP-3030/2330)

Specifies the Output Tray.

(For DP-C406/C306/C266, DP-C405/C305/C265, DP-C354/C323/C264/C263/C213)

<b>Automatically Select</b>	Automatically selects one of the following Output trays.
<b>Inner Tray</b>	Sends printed jobs to the Inner tray.
<b>Outer Tray</b>	Sends printed jobs to the Outer tray. (Selection only displays if the printer is equipped with an Outer tray)
<b>Finisher</b>	Sends printed jobs to the Finisher. (Selection only displays if the printer is equipped with a Finisher)

(For DP-8060/8045/8035)

<b>Bin 1</b>	Sends printed jobs to the Bin 1.
<b>Bin 2</b>	Sends printed jobs to the Bin 2.

**Note:**

- You can only select **Bin 1/ Bin 2** for the output tray.

(For DP-8032/8025, DP-3030/2330)

<b>Auto Selection</b>	Automatically selects one of the following Output Trays.
<b>Inner Tray</b>	Sends printed jobs to the Inner tray 1 (Lower), Inner tray (Upper).
<b>Outer Tray</b>	Sends printed jobs to the Outer tray. (Selection only displays if the printer is equipped with an Outer tray)
<b>Finisher</b>	Sends printed jobs to the Finisher. (Selection only displays if the printer is equipped with a Finisher)

**Note:**

- **Finisher Bin/Output Tray** is not available for DP-8020P/8020E, DP-190/180, UF-9000.

### 3. Sort/Sort Method

Specifies how pages are sorted when multiple copies are printed.

**Note:**

- **Shift** is available only if the printer is equipped with a Finisher.
- **Rotate** is available only when **Paper Source** is set to **Auto Select**.
- **Rotate** requires paper of the specified size to be loaded in two trays, loaded for Landscape and Portrait printing.
- **Shift** is not available for DP-8020P/8020E.
- **Sort** may not be available with certain paper sizes.

<b>Non Sort(Stack)</b>	Print individual pages in the specified quantity. For example, if you print three copies of a five-page document, the printer prints page 1 three times before printing page 2 and so on.
<b>Sort</b>	Copies are stacked in the order they are printed. Multiple copies are printed in separate sets in the specified quantity. For example, if you print three copies of a five-page document, the printer prints pages 1-5 three times.
<b>Rotate Stack</b>	Each set is rotated, and stacked uniformly.
<b>Rotate Sort</b>	Each set is rotated, and sorted.
<b>Shift Stack</b>	Each set is shifted, and stacked uniformly.
<b>Shift Sort</b>	Each set is shifted, and sorted.

### 4. Staple

Specifies the position of the staple.

**Left 1, Left 2, Right 1, Right 2, Top 2** or **Saddle Stitch** (For DP-C406/C306/C266, DP-C405/C305/C265, DP-C354/C323/C264/C263/C213, DP-8060/8045/8035)

**Left 1, Right 1** (For DP-8032/8025, DP-3030/2330)

**Note:**

- Only available if the printer is equipped with an optional Finisher.
- Available staple position may be different depending on the Finishers.
- The staple capacity differ depending on the types of Finisher and the paper size. Refer to Specifications in the Operating Instructions (For Basic Function) provided on another booklet.
- When setting the staple position to Saddle Stitch, set paper in Landscape position.
- **Staple** is not available for DP-8020P/8020E, DP-190/180, UF-9000.
- Do not use **Stack, Rotate, and Shift**.
- Some staple positions may not be available with certain punch position combinations. (For example, when selecting **Left1 position** for the staple position and **Right** for the punch position.)
- **Staple** may not be available with certain paper sizes.

### 5. Punch

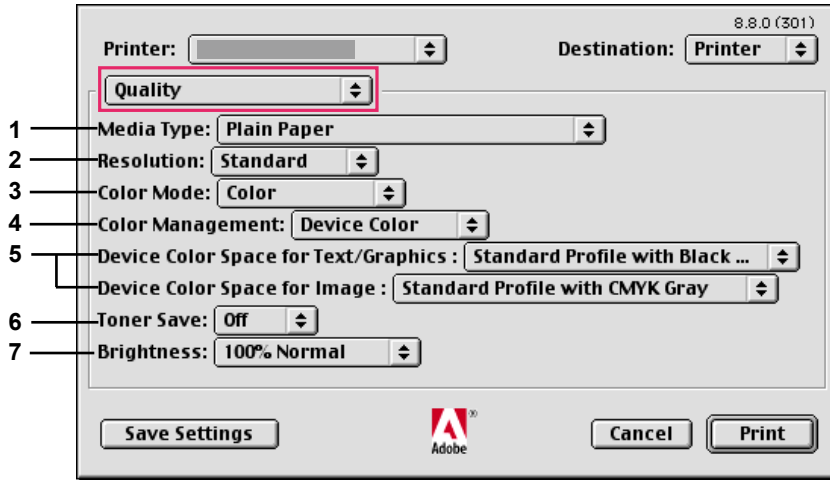
Specifies the hole punch position.

**Note:**

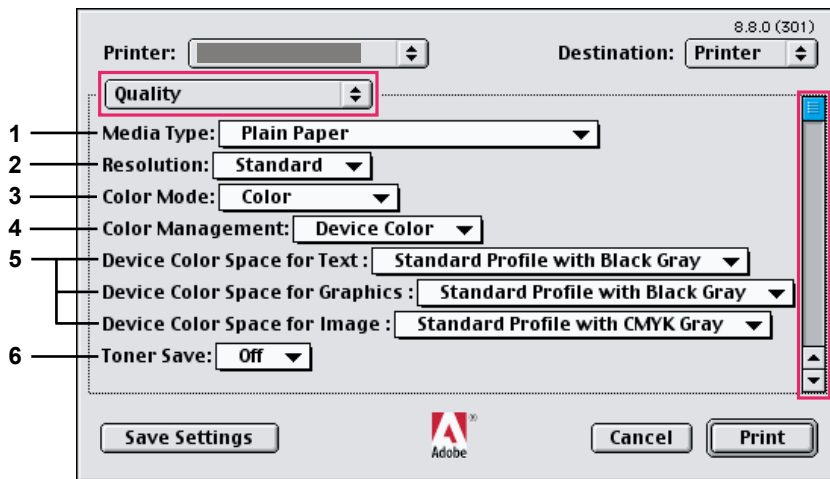
- Only available if the printer is equipped with an optional Finisher, and Punch Unit.
- The paper size for which hole punching can be performed differ depending on the types of Finisher.
- **Punch** is not available for DP-8032/8025, DP-3030/2330, DP-8020P/8020E, DP-190/180, and UF-9000.
- Do not use **Rotate** and **Shift**.
- Some punch positions may not be available with certain staple position combinations. (For example, when selecting **Left1 position** for the staple position and **Right** for the punch position.)
- **Punch** may not be available with certain paper sizes.

## ■ Quality Menu

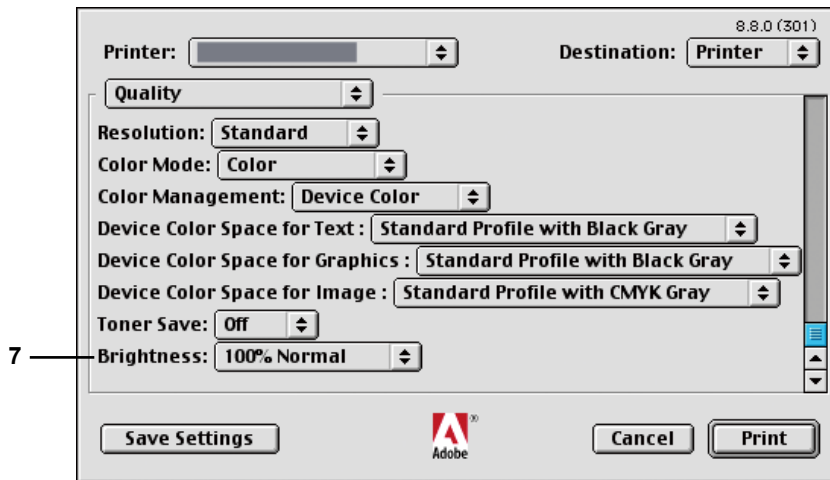
Quality menu configures the settings that determine the print quality.



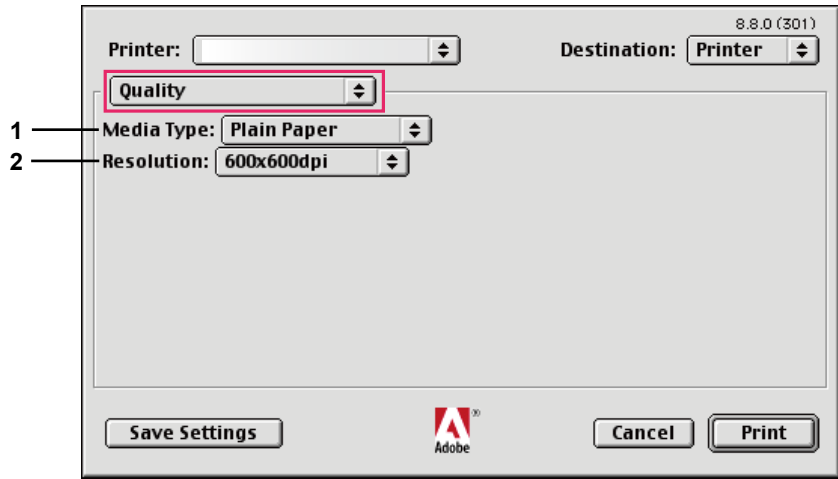
(For DP-C406/C306/C266, DP-C405/C305/C265)



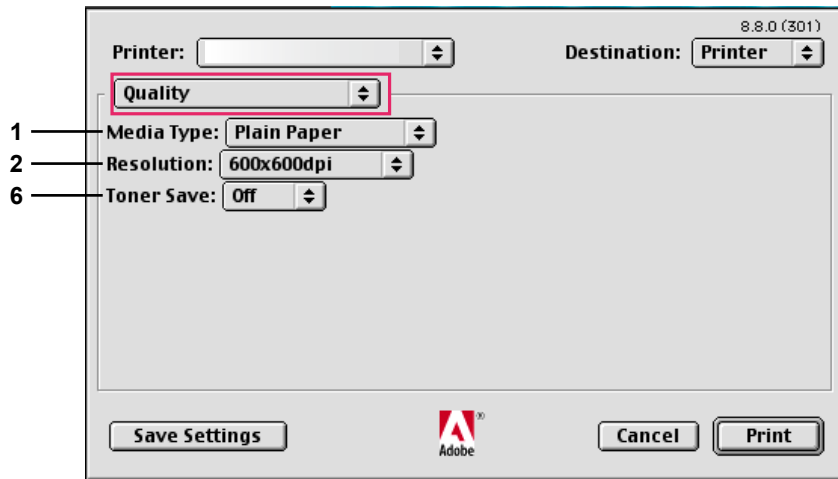
↓ (scroll the dialog box)



(For DP-C354/C323/C264/C263/C213)



(For DP-8060/8045/8035, DP-8032/8025, DP-3030/2330, DP-8020P/8020E)



(For DP-190/180, UF-9000)

**1. Media Type**

Specifies the type of paper. Paper Feed method (Tray or Multi-Purpose Tray) differ depending on the **Media Type (Plain Paper, Thick Paper, etc.)** selected. See below for the **Media Type**.

**For DP-C406/C306/C266, DP-C405/C305/C265**

Plain Paper, Thin Paper, Thick Paper, Index/Cover Paper, Coated/Cover Paper, Coated Paper, Labels, Glossy/Photo Paper, Recycled Paper, Envelope, Transparency, Index/Cover Paper (Preprinted), Coated/Cover Paper (Preprinted), Thick Paper (Preprinted), Coated Paper (Preprinted), Heavy Index, Heavy Index (Preprinted), Heavy Coated, Heavy Coated (Preprinted)

**For DP-C354/C323/C264/C263/C213**

Plain Paper, Thin Paper, Thick Paper, Index/Cover Paper, Coated/Cover Paper, Coated Paper, Labels, Glossy/Photo Paper, Recycled Paper, Envelope, Transparency, Index/Cover Paper (Preprinted), Coated/Cover Paper (Preprinted), Thick Paper (Preprinted), Coated Paper (Preprinted)

**For DP-8060/8045/8035, DP-8032/8025 and DP-3030/2330**

Plain Paper, Thick Paper

**For DP-8020P/8020E**

Plain Paper, Thick Paper, Transparency, Envelope

**For DP-190/180, UF-9000**

Plain Paper, Thick Paper, Transparency, Label, Cotton Paper, Envelope

**2. Resolution**

Specifies the printing resolution. Choosing a higher resolution improves the print quality but slows printing.

(For DP-C406/C306/C266, DP-C405/C305/C265, DP-C354/C323/C264/C263/C213)

<b>Standard</b>	Prints at a print engine resolution of <b>600×600 dpi</b> .
<b>Enhance</b>	Prints at a print engine resolution of <b>1200×1200 dpi</b> .

**Note for DP-C406/C306/C266, DP-C405/C305/C265, DP-C354/C323/C264/C263/C213:**

- *Printing takes more time when **Enhance** is selected.*
- ***Enhance** is not available when the Media Type is set to Transparency.*

(For DP-8060/8045/8035, DP-8032/8025, DP-3030/2330, DP-8020P/8020E, DP-190/180, UF-9000)

<b>300×300dpi</b>	Prints at a print engine resolution of <b>300×300 dpi</b> .
<b>600×600dpi</b>	Prints at a print engine resolution of <b>600×600 dpi</b> .
<b>1200×600dpi</b>	Prints at a print engine resolution of <b>1200×600 dpi</b> .

**3. Color Mode (Available for DP-C406/C306/C266, DP-C405/C305/C265, DP-C354/C323/C264/C263/C213)**

Specifies whether to print in color or grayscale.

<b>Color</b>	Prints documents in color.
<b>Photo Color</b>	Prints photos with the optimal settings.
<b>Grayscale</b>	Prints documents in monochrome.

**Note:**

- ***Photo Color** mode takes more time to print a file.*

4. **Color Management (Available for DP-C406/C306/C266, DP-C405/C305/C265, DP-C354/C323/C264/C263/C213)**

Specifies color settings to fine-tune color reproduction.

<b>Device Color</b>	Choose this option to adjust the original color settings.
<b>None</b>	Select <b>None</b> when using ICM or application's color management.
<b>SWOP</b>	Simulates printing to a standard American offset press.
<b>Euroscale</b>	Simulates printing to an European offset press.

5. **Device Color Space for Text / Graphics / Image (Available for DP-C406/C306/C266, DP-C405/C305/C265, DP-C354/C323/C264/C263/C213)**

Specifies color reproduction and Black output for text, graphics and images.

<b>Standard Profile with Black Gray</b>	Print with color reproduction close to standard color monitors. Use only Black to reproduce intermediate shades of gray.
<b>Vivid Profile with Black Gray</b>	Print with more vivid color reproduction. A good choice for line art and graphics. Use only Black to reproduce intermediate shades of gray.
<b>Standard Profile with CMYK Gray</b>	Print with color reproduction close to standard color monitors. Uses four colors of CMYK to reproduce intermediate shades of gray.
<b>Vivid Profile with CMYK Gray</b>	Print with more vivid color reproduction. A good choice for line art and graphics. Uses four colors of CMYK to reproduce intermediate shades of gray.

6. **Toner Save (Available for DP-C406/C306/C266, DP-C405/C305/C265, DP-C354/C323/C264/C263/C213, DP-190/180, UF-9000)**

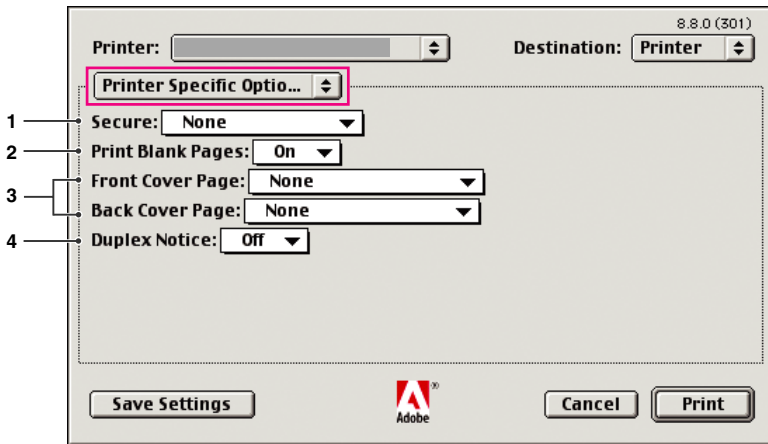
Choose On to conserve toner. The overall effect is lighter, so this feature is recommended for test printing or producing documents for which appearance is not critical.

7. **Brightness (Available for DP-C406/C306/C266, DP-C405/C305/C265, DP-C354/C323/C264/C263/C213)**

Color brightness is adjustable. **100%** is normal brightness. Brightness darkens as the numerical value grows.

## ■ Printer Specific Options Menu

**Printer Specific Options** menu is used for configuring Panasonic Printing System associated settings.



### 1. Secure

Printed documents can be saved on the printer's hard disk drive (HDD) if the printer is equipped with one. Saved documents can be printed from the printer's control panel. See "Mailbox Printing" on page 26. When using the Mailbox printing function, check the **HDD Unit** in "Installable Options". For details, refer to "Operating Instructions (For Setting Up PostScript3 Printer Driver)".

<b>None</b>	Mailbox printing is not applied.
<b>Check then Print</b>	Allows you to print one proof set, before proceeding to print a large multi-set with various settings. The documents data will be deleted from the printer after printing.
<b>Mailbox</b>	Saves print data in the printer, in the mailbox specified by the <b>User ID</b> . The <b>User ID</b> must be entered to print documents saved in Mailbox. The document data will remain in the printer until it is deleted.
<b>Secure Mailbox</b>	Saves print data in the printer, in the mailbox specified by the User ID. The <b>User ID</b> and <b>Password</b> must be entered to print confidential documents saved in Secure Mailbox. The document data will remain in the printer until it is deleted.

**Note:**

- Using Mailbox printing requires that the **Hard Disk Drive Unit** is installed in the printer. For details, refer to "Operating Instructions (For Setting Up PostScript3 Printer Driver)".
- **Check then Print** function is not available for DP-8060/8045/8035, DP-8032/8025, DP-3030/2330, DP-8020P/8020E, DP-190/180, UF-9000.
- Do not use **Stack**.

### 2. Print Blank Pages

Choose **On** to enable printing Blank pages.

**Note:**

- The **Print Blank Pages** is not selectable if the **Print on Both Sides** is set to be enabled on the **Layout** menu.
- The paper size for which hole punching can be performed differ depending on the types of Finisher.

### 3. Front/Back Cover or Front/Back Cover Page

You can configure the settings for cover pages. To use a cover page, select **Front Cover/Front Cover Page** or **Back Cover/Back Cover Page**, and specify the paper source to use for pages for the Front and Back covers.

### 4. Duplex Notice

Check whether "2-Sided Print" is printed on the footer of 1st page when printing with 2-Sided Page style.

**Note:**

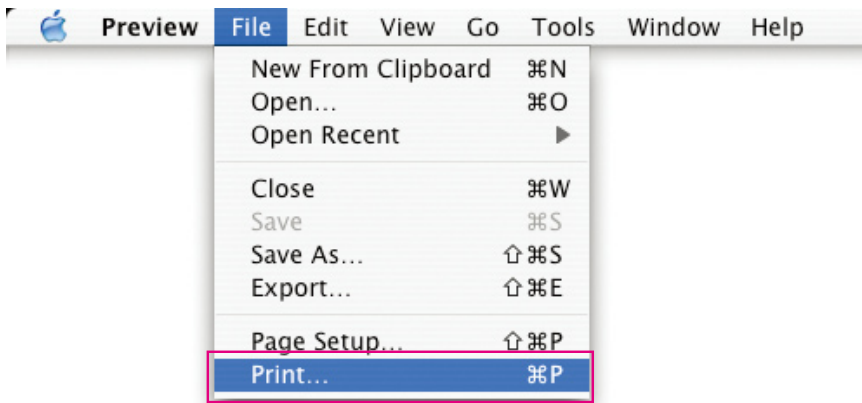
- This option is available only for DP-8032/8025, DP-3030/2330.
- The position where the Duplex Notice is to be printed may differ depending on the Paper Orientation settings.

# Configuring the Printer Driver Settings (For Mac OS X)

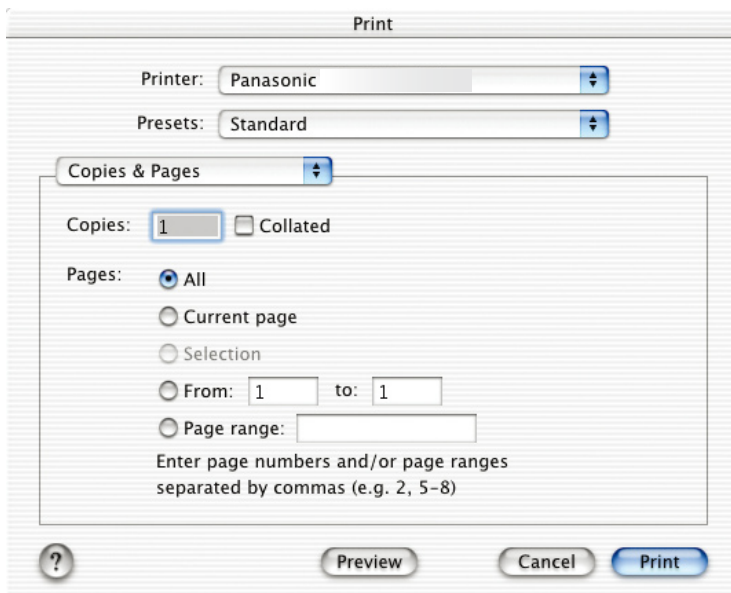
## ■ Opening the Print Dialog Box

To change the printer settings, open the dialog box for the printer properties by performing the following steps.

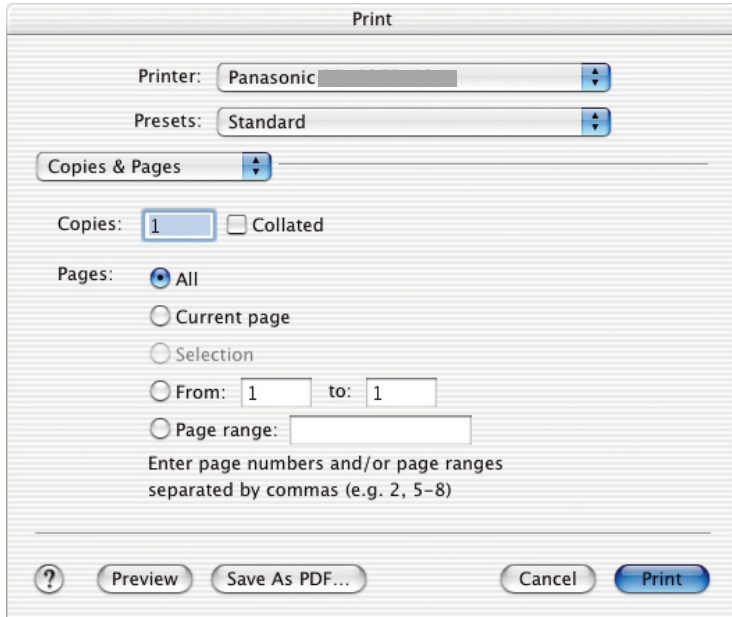
- 1 Select the **File** menu > **Print**.



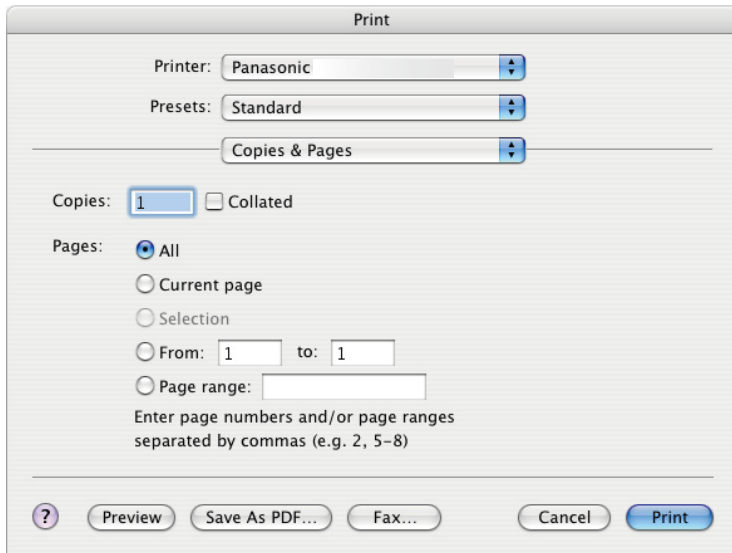
- 2 Select the Panasonic printer.



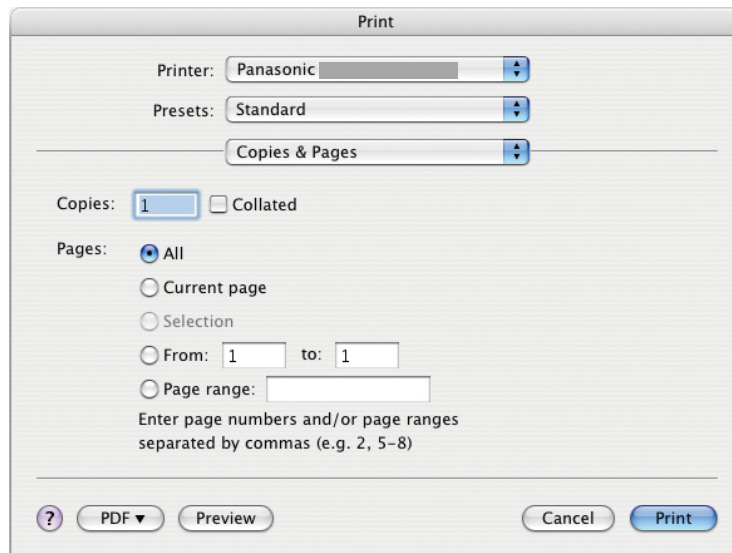
(OS X 10.1)



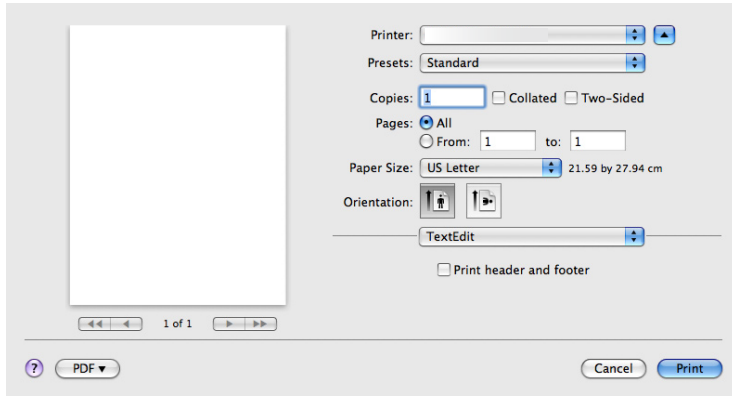
(OS X 10.2)



(OS X 10.3)



(OS X 10.4)



(OS X 10.5)

- 3 In the print dialog box, you will see a number of titles in the pop-up menu. Select the desired menu title(s), and configure the properties as necessary. Select Save Custom Setting menu to save the current settings for the default values.

#### Printer Features menu:

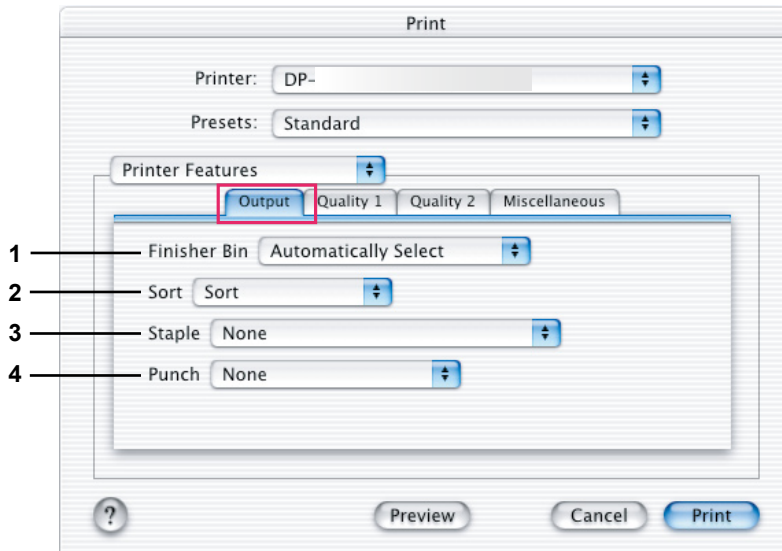
There are four kinds of Feature Sets in the Printer Features menu. These are **Panasonic Printing System** associated settings. For additional details, refer to the page(s) relevant to the subject you are interested in.

- Output Menu : See page 57
- Quality\_1 Menu : See page 61
- Quality\_2 Menu : See page 68
- Miscellaneous Menu : See page 70

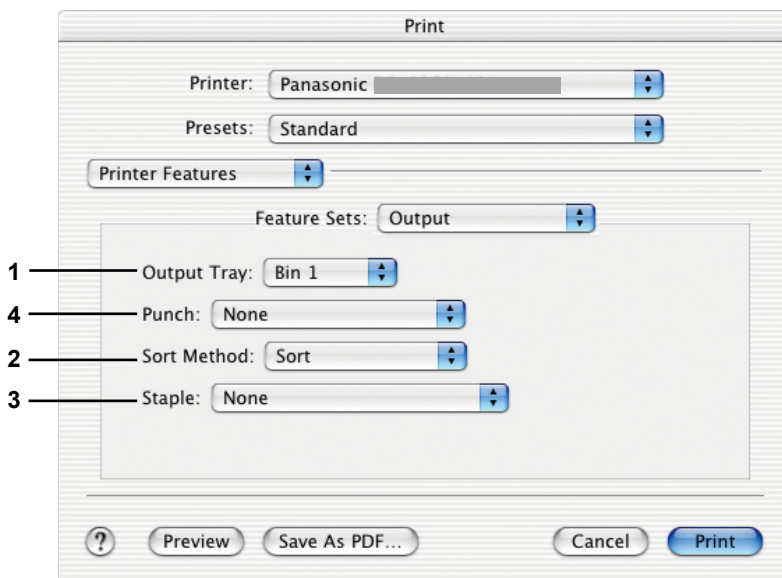
## ■ Output Menu (in Printer Features Menu)

**Output** menu is used for configuring output settings.

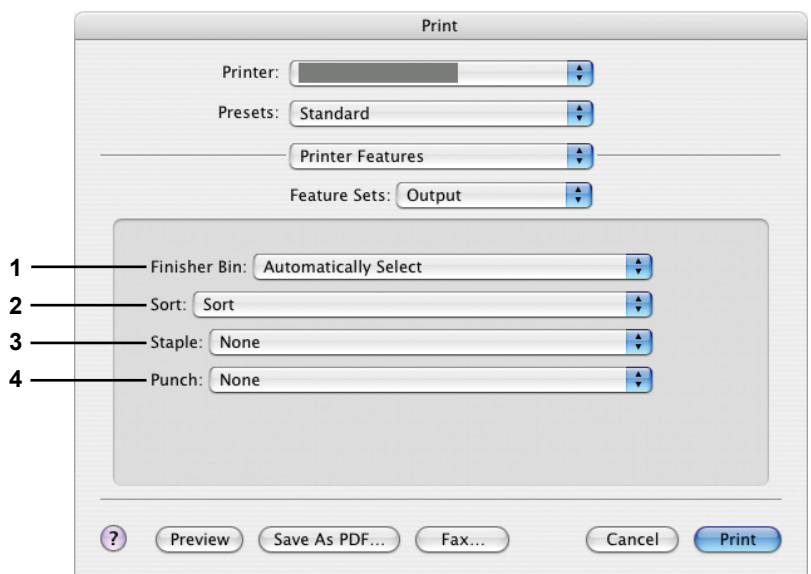
The screens displayed differ depending on the type of OS and machine you are using. Several examples of the screens are shown below with explanations for each setting. Select the settings according to the screens displayed on your PC.



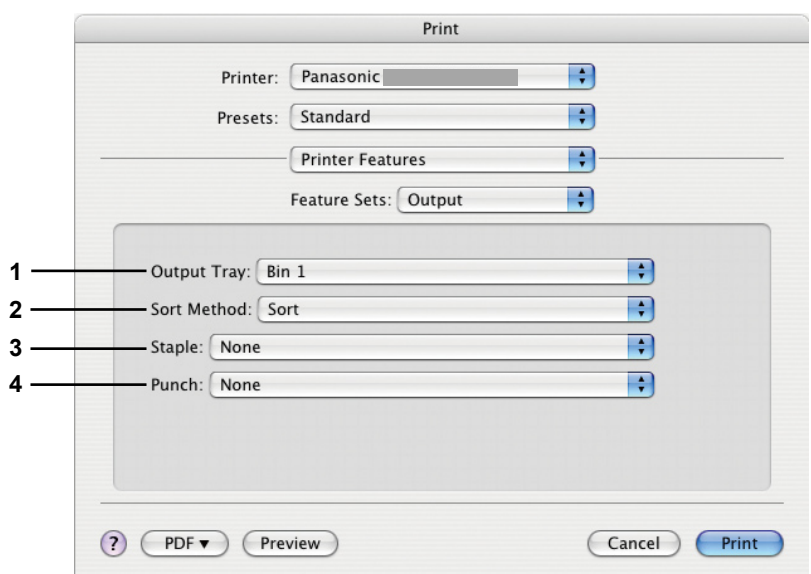
(OS X 10.1)



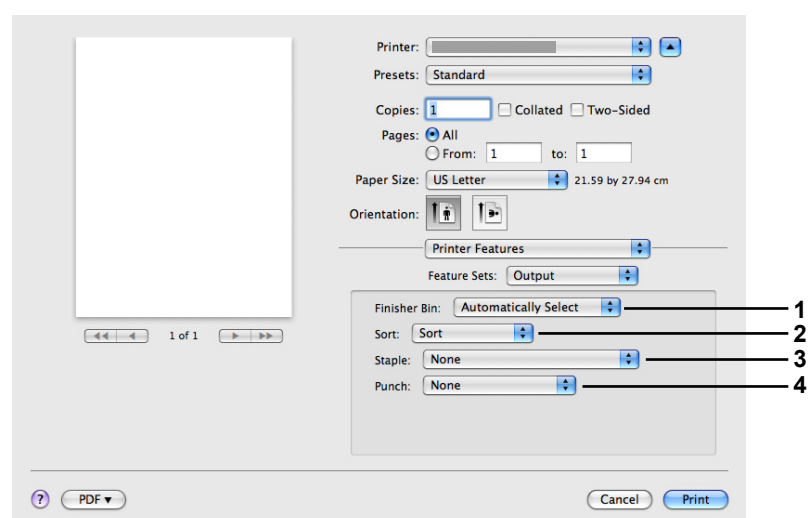
(OS X 10.2)



(OS X 10.3)



(OS X 10.4)



(OS X 10.5)

## 1. Finisher Bin (DP-C406/C306/C266, DP-C405/C305/C265, DP-C354/C323/C264/C263/C213)/ Output Tray (DP-8060/8045/8035, DP-8032/8025, DP-3030/2330)

Specifies the Output Tray.

(For DP-C406/C306/C266, DP-C405/C305/C265, DP-C354/C323/C264/C263/C213)

<b>Automatically Select</b>	Automatically selects one of the following Output trays.
<b>Inner Tray</b>	Sends printed jobs to the Inner tray.
<b>Outer Tray</b>	Sends printed jobs to the Outer tray. (Selection only displays if the printer is equipped with an Outer tray)
<b>Finisher</b>	Sends printed jobs to the Finisher. (Selection only displays if the printer is equipped with a Finisher)

**Note:**

- Do not use **Shift**, **Staple**, and **Punch** when using the Inner or Outer tray.

(For DP-8060/8045/8035)

<b>Bin 1</b>	Sends printed jobs to the Bin 1.
<b>Bin 2</b>	Sends printed jobs to the Bin 2.

**Note:**

- You can only select **Bin 1/ Bin 2** for the output tray.

(For DP-8032/8025, DP-3030/2330)

<b>Auto Selection</b>	Automatically selects one of the following Output Trays.
<b>Inner Tray</b>	Sends printed jobs to the Inner Tray 1 (Lower), Inner Tray 2 (Upper).
<b>Outer Tray</b>	Sends printed jobs to the Outer tray. (Selection only displays if the printer is equipped with an Outer tray)
<b>Finisher</b>	Sends printed jobs to the Finisher. (Selection only displays if the printer is equipped with a Finisher)

**Note:**

- **Inner Tray 2 (Upper)**, **Outer Tray** and **Finisher** are not available for OS 10.1.
- **Finisher Bin/Output Tray** is not available for DP-8020P/8020E, DP-190/180, UF-9000.

## 2. Sort /Sort Method

Specifies how pages are sorted when multiple copies are printed.

<b>Non Sort(Stack)</b>	Print individual pages in the specified quantity. For example, if you print three copies of a five-page document, the printer prints page 1 three times before printing page 2 and so on.
<b>Sort</b>	Copies are stacked in the order they are printed. Multiple copies are printed in separate sets in the specified quantity. For example, if you print three copies of a five-page document, the printer prints pages 1-5 three times.
<b>Rotate Stack</b>	Each set is rotated, and stacked uniformly.
<b>Rotate Sort</b>	Each set is rotated, and sorted.
<b>Shift Stack</b>	Each set is shifted, and stacked uniformly.
<b>Shift Sort</b>	Each set is shifted, and sorted.

**Note:**

- **Shift** is available only if the printer is equipped with a Finisher.
- **Rotate** requires paper of the specified size to be loaded in two trays, loaded for Landscape and Portrait printing.
- **Shift Stack** and **Shift Sort** are not available for OS X 10.1.x.

### 3. Staple

Specifies the position of the staple. Choose the position from

**Left 1, Left 2, Right 1, Right 2, Top 2** or **Saddle Stitch** (For DP-C406/C306/C266, DP-C405/C305/C265, DP-C354/C323/C264/C263/C213, DP-8060/8045/8035)

**Left 1, Right 1** (For DP-8032/8025, DP-3030/2330)

**Note:**

- Only available if the printer is equipped with an optional Finisher.
- Available staple position may be different depending on the Finishers.
- The staple capacity differ depending on the types of Finisher and the paper size. Refer to Specifications in the Operating Instructions (For Basic Function) provided on another booklet.
- Do not choose Saddle Stitch as the Booklet mode is not available for Mac OS X.
- **Staple** is not available for OS X 10.1.x.
- **Staple** is not available for DP-8020P/8020E, DP-190/180, UF-9000.
- Do not use **Stack, Rotate, and Shift**.
- Some staple positions may not be available with certain punch position combinations. (For example, when selecting **Left1 position** for the staple position and **Right** for the punch position.)

### 4. Punch

Specifies the hole punch position.

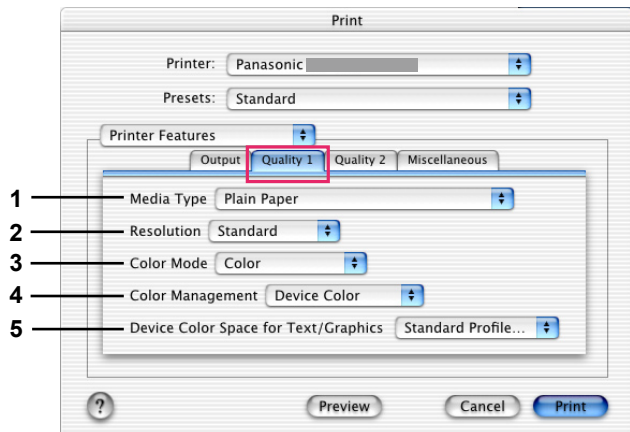
**Note:**

- Only available if the printer is equipped with an optional Finisher and Punch Unit.
- The paper size for which hole punching can be performed differ depending on the types of Finisher.
- **Punch** is not available for OS X 10.1.x.
- **Punch** is not available for DP-8032/8025, DP-3030/2330, DP-8020P/8020E, DP-190/180, UF-9000.
- Do not use **Rotate and Shift**.
- Some punch positions may not be available with certain staple position combinations. (For example, when selecting **Left1 position** for the staple position and **Right** for the punch position.)

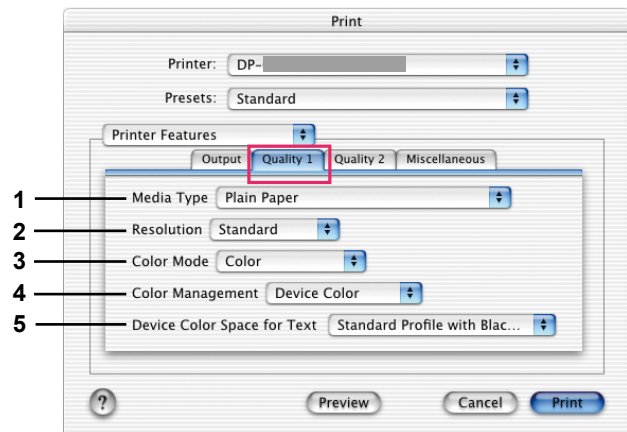
■ **Quality\_1 Menu (in Printer Features Menu) (For DP-C406/C306/C266, DP-C405/C305/C265, DP-C354/C323/C264/C263/C213)**

■ **Quality Menu (in Printer Features Menu) (For DP-8060/8045/8035, DP-8032/8025, DP-3030/2330, DP-8020P/8020E, DP-190/180, UF-9000)**

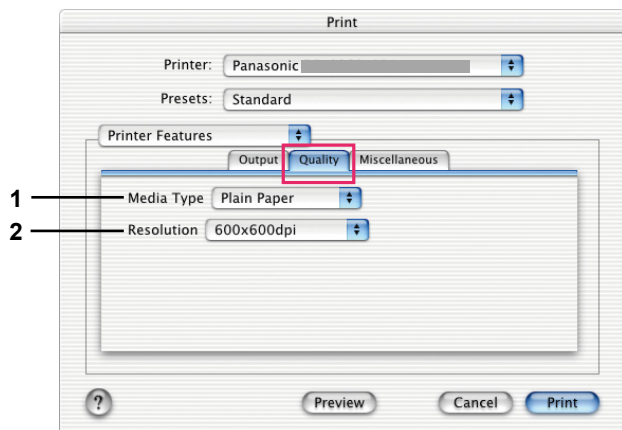
Quality\_1 / Quality menu configures the settings that determine the print quality.



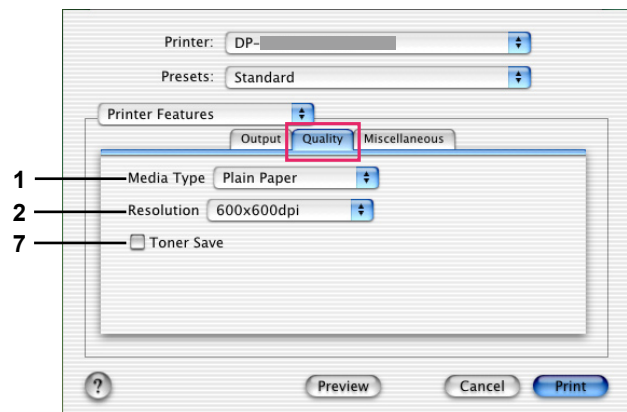
(OS X 10.1 for DP-C406/C306/C266, DP-C405/C305/C265)



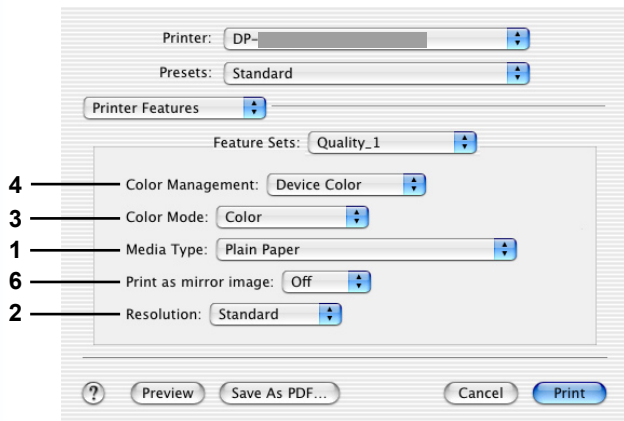
(OS X 10.1 for DP-C354/C323/C264/C263/C213)



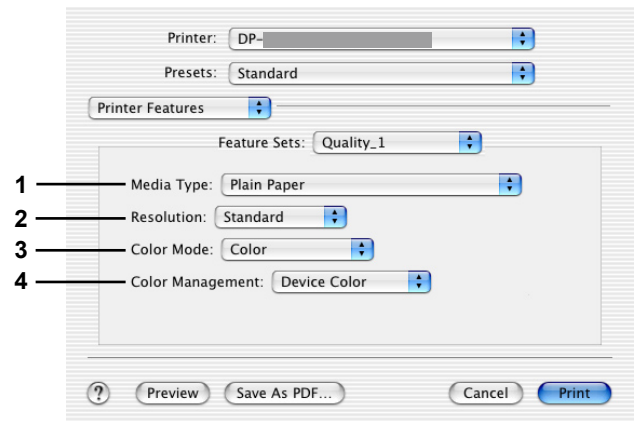
(OS X 10.1 for DP-8060/8045/8035, DP-8032/8025, DP-3030/2330, DP-8020P/8020E)



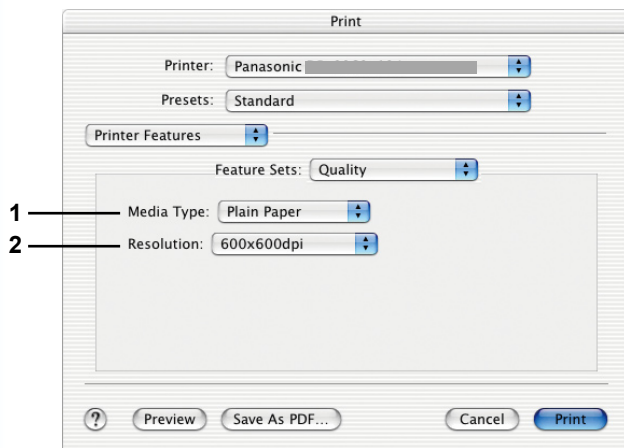
(OS X 10.1 for DP-190/180, UF-9000)



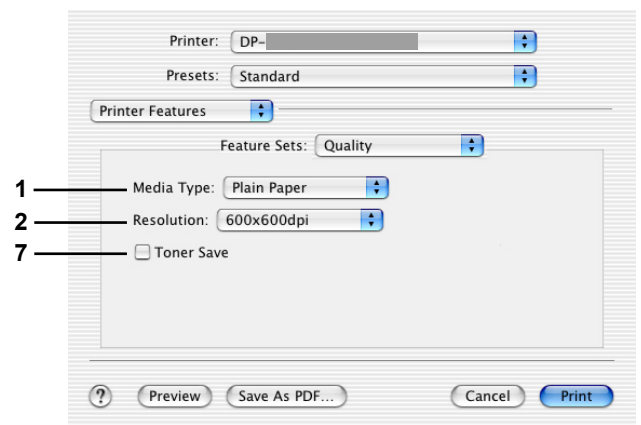
(OS X 10.2 for DP-C406/C306/C266,  
DP-C405/C305/C265)



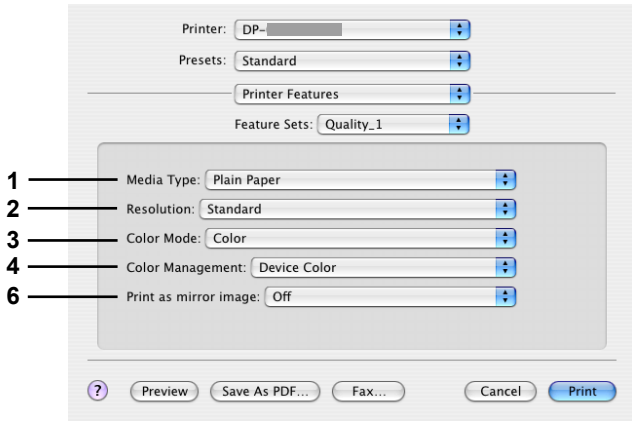
(OS X 10.2 for DP-C354/C323/C264/C263/C213)



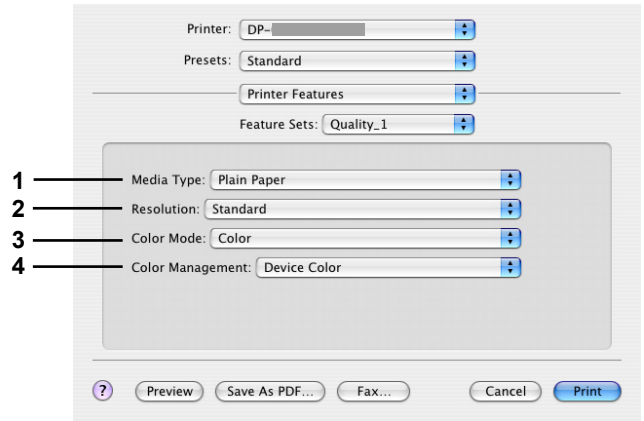
(OS X 10.2 for DP-8060/8045/8035,  
DP-8032/8025, DP-3030/2330,  
DP-8020P/8020E)



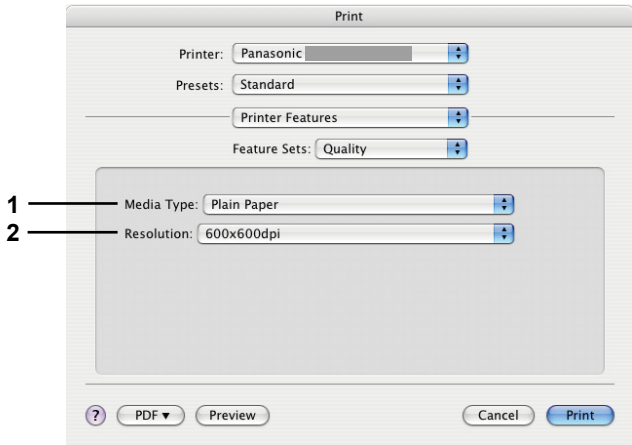
(OS X 10.2 for DP-190/180, UF-9000)



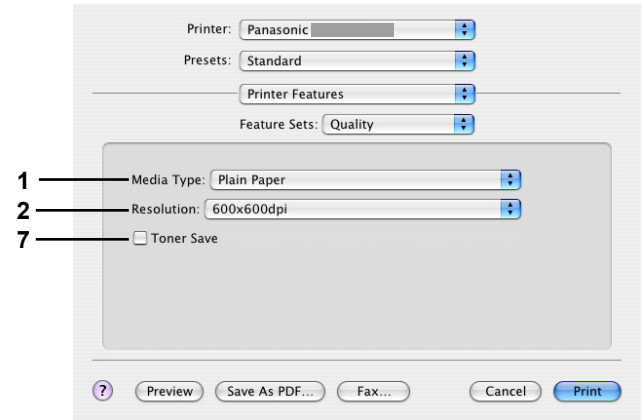
(OS X 10.3 for DP-C406/C306/C266,  
DP-C405/C305/C265)



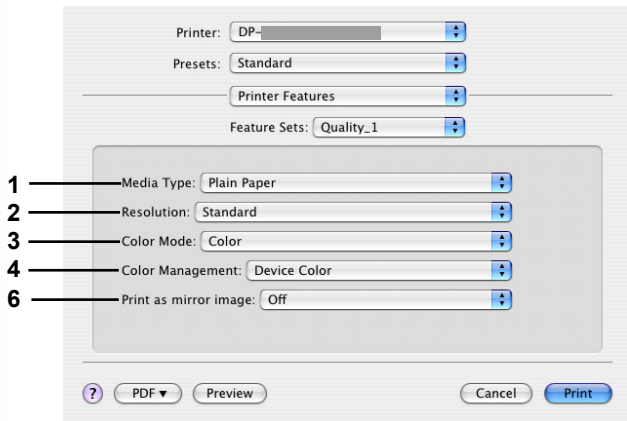
(OS X 10.3 for DP-C354/C323/C264/C263/C213)



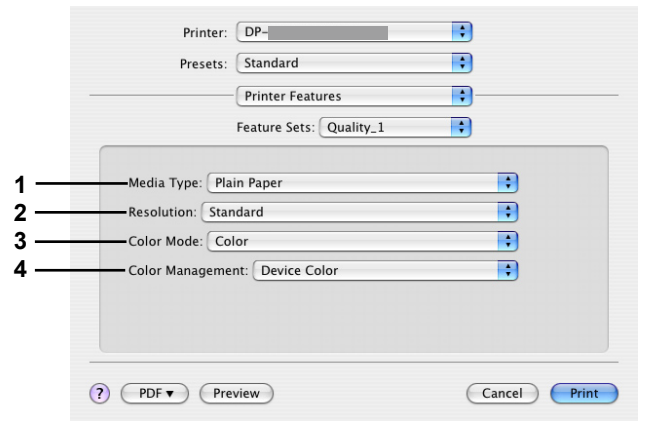
(OS X 10.3 for DP-8060/8045/8035,  
DP-8032/8025, DP-3030/2330,  
DP-8020P/8020E)



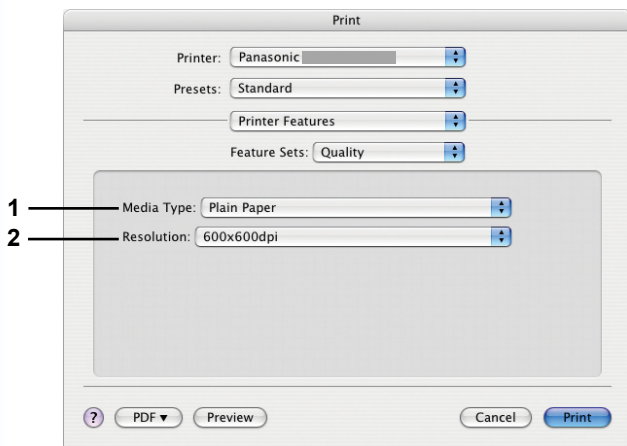
(OS X 10.3 for DP-190/180, UF-9000)



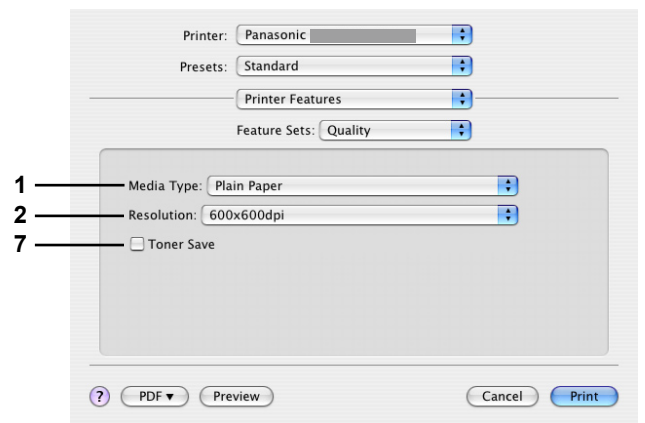
(OS X 10.4 for DP-C406/C306/C266,  
DP-C405/C305/C265)



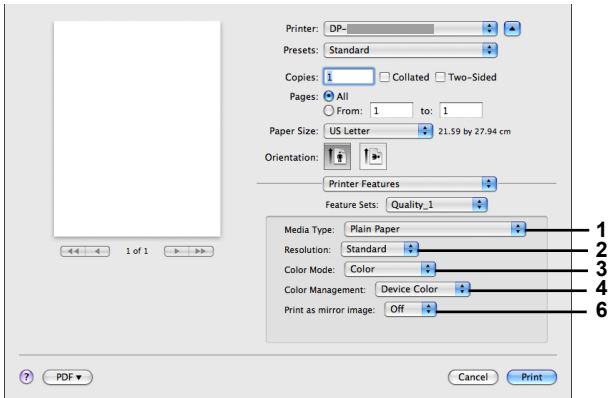
(OS X 10.4 for DP-C354/C323/C264/C263/C213)



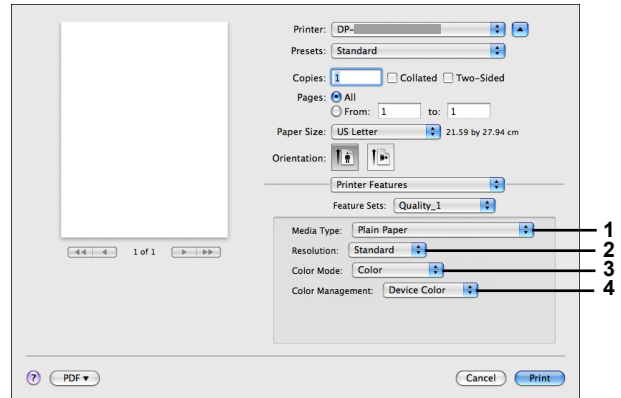
(OS X 10.4 for DP-8060/8045/8035,  
DP-8032/8025, DP-3030/2330,  
DP-8020P/8020E)



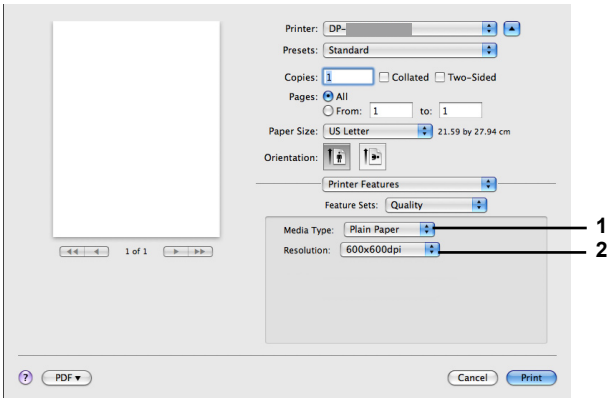
(OS X 10.4 for DP-190/180, UF-9000)



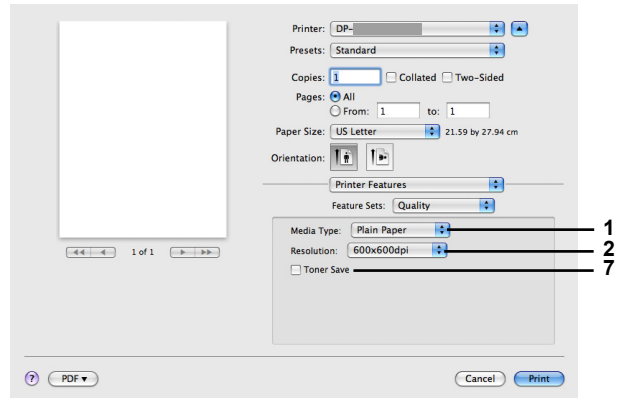
(OS X 10.5 for DP-C406/C306/C266,  
DP-C405/C305/C265)



(OS X 10.5 for DP-C354/C323/C264/C263/C213)



(OS X 10.5 for DP-8060/8045/8035, DP-8032/8025,  
DP-3030/2330, DP-8020P/8020E)



(OS X 10.5 for DP-190/180, UF-9000)

**1. Media Type**

Specifies the type of paper. Paper Feed method (Tray or Multi-Purpose Tray) may differ depending on the **Media Type (Plain Paper, Thick Paper, etc.)** selected. See below for the **Media Type**.

**For DP-C406/C306/C266, DP-C405/C305/C265**

Plain Paper, Thin Paper, Thick Paper, Index/Cover Paper, Coated/Cover Paper, Coated Paper, Labels, Glossy/Photo Paper, Recycled Paper, Envelope, Transparency, Index/Cover Paper (Preprinted), Coated/Cover Paper (Preprinted), Thick Paper (Preprinted), Coated Paper (Preprinted), Heavy Index, Heavy Index (Preprinted), Heavy Coated, Heavy Coated (Preprinted)

**For DP-C354/C323/C264/C263/C213**

Plain Paper, Thin Paper, Thick Paper, Index/Cover Paper, Coated/Cover Paper, Coated Paper, Labels, Glossy/Photo Paper, Recycled Paper, Envelope, Transparency, Index/Cover Paper (Preprinted), Coated/Cover Paper (Preprinted), Thick Paper (Preprinted), Coated Paper (Preprinted)

**For DP-8060/8045/8035, DP-8032/8025 and DP-3030/2330**

Plain Paper, Thick Paper

**For DP-8020P/8020E**

Plain Paper, Thick Paper, Transparency, Envelope

**For DP-190/180, UF-9000**

Plain Paper, Thick Paper, Transparency, Label, Cotton Paper, Envelope

**2. Resolution**

Specifies the printing resolution. Choosing a higher resolution improves the print quality but slows printing.

(For DP-C406/C306/C266, DP-C405/C305/C265, DP-C354/C323/C264/C263/C213)

<b>Standard</b>	Prints at a print engine resolution of <b>600×600 dpi</b> .
<b>Enhance</b>	Prints at a print engine resolution of <b>1200×1200 dpi</b> .

**Note for DP-C406/C306/C266, DP-C405/C305/C265, DP-C354/C323/C264/C263/C213:**

• *Printing takes more time when **Enhance** is selected.*

(For DP-8060/8045/8035, DP-8032/8025, DP-3030/2330, DP-8020P/8020E, DP-190/180, UF-9000)

<b>300×300dpi</b>	Prints at a print engine resolution of <b>300×300 dpi</b> .
<b>600×600dpi</b>	Prints at a print engine resolution of <b>600×600 dpi</b> .
<b>1200×600dpi</b>	Prints at a print engine resolution of <b>1200×600 dpi</b> .

**3. Color Mode (Available for DP-C406/C306/C266, DP-C405/C305/C265, DP-C354/C323/C264/C263/C213)**

Specifies whether to print in color or grayscale.

<b>Color</b>	Prints documents in color.
<b>Photo Color</b>	Prints photos with the optimal settings.
<b>Grayscale</b>	Prints documents in monochrome.

**Note:**

• ***Photo Color** mode takes more time to print a file.*

**4. Color Management (Available for DP-C406/C306/C266, DP-C405/C305/C265, DP-C354/C323/C264/C263/C213)**

Specifies color settings to fine-tune color reproduction.

<b>Device Color</b>	Choose this option to adjust the original color settings.
<b>None</b>	Select <b>None</b> when using ICM or application's color management.
<b>SWOP</b>	Simulates printing to a standard American offset press.
<b>Euroscale</b>	Simulates printing to an European offset press.

**5. Device Color Space for Text / Graphics / Image (Available for DP-C406/C306/C266, DP-C405/C305/C265, DP-C354/C323/C264/C263/C213)**

Specifies color reproduction and Black output for text, graphics and images.

<b>Standard Profile with Black Gray</b>	Print with color reproduction close to standard color monitors. Use only Black to reproduce intermediate shades of gray.
<b>Vivid Profile with Black Gray</b>	Print with more vivid color reproduction. A good choice for line art and graphics. Use only Black to reproduce intermediate shades of gray.
<b>Standard Profile with CMYK Gray</b>	Print with color reproduction close to standard color monitors. Use the four colors of CMYK to reproduce intermediate shades of gray.
<b>Vivid Profile with CMYK Gray</b>	Print with more vivid color reproduction. A good choice for line art and graphics. Use the four colors of CMYK to reproduce intermediate shades of gray.

**6. Print as mirror image (Available for DP-C406/C306/C266, DP-C405/C305/C265)**

Select "Print as mirror image" to print the documents in mirror image.

**Note:**

- *This function is not featured for OS X 10.1.*

**7. Toner Save (Available for DP-190/180, UF-9000)**

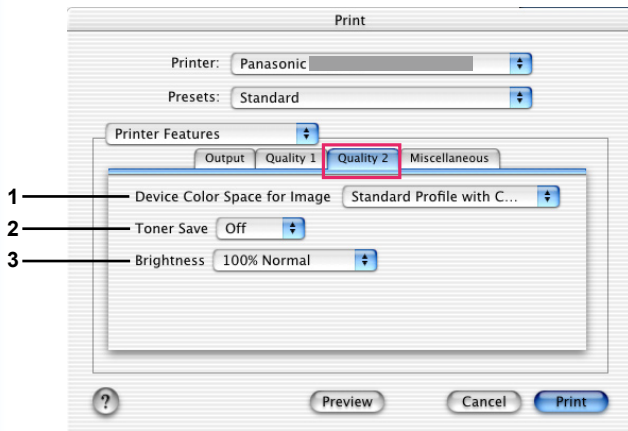
The overall effect is lighter, so this feature is recommended for test printing or producing documents for which appearance is not critical.

**Note:**

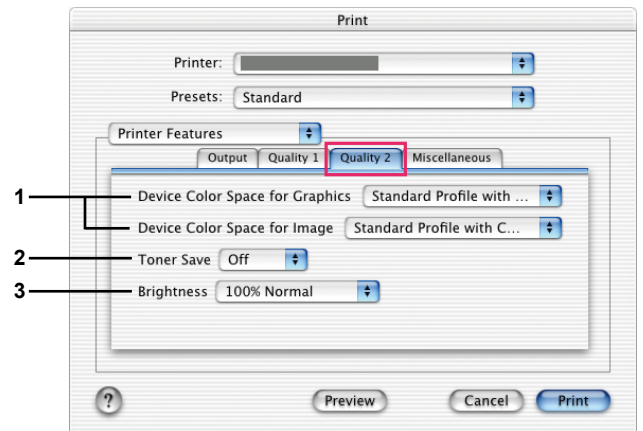
- *For DP-C406/C306/C266, DP-C405/C305/C265, DP-C354/C323/C264/C263/C213, this function is available on the Quality\_2.*

## Quality\_2 Menu (in Printer Features Menu) (For DP-C406/C306/C266, DP-C405/C305/C265, DP-C354/C323/C264/C263/C213)

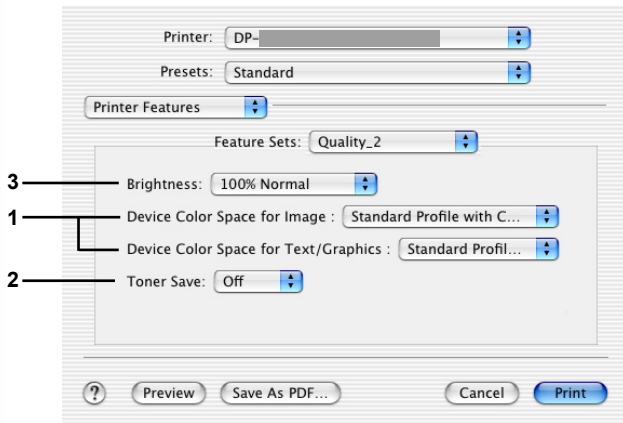
Quality\_2 menu configures the settings that determine the print quality.



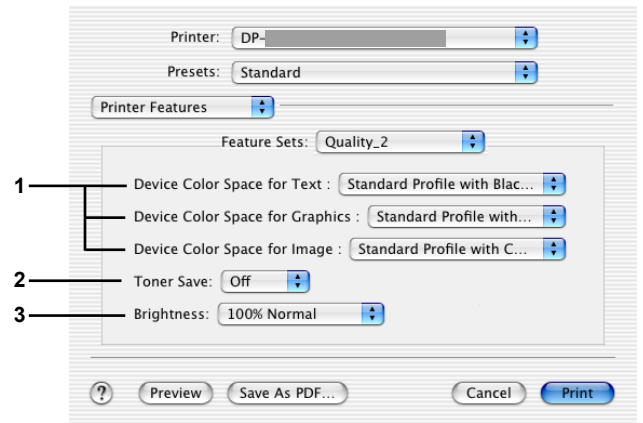
(OS X 10.1 for DP-C406/C306/C266, DP-C405/C305/C265)



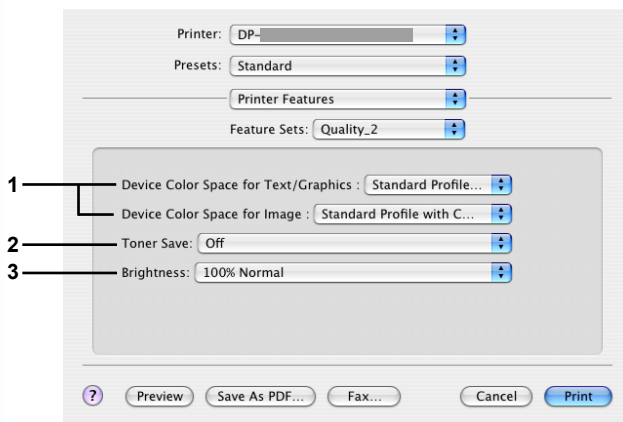
(OS X 10.1 for DP-C354/C323/C264/C263/C213)



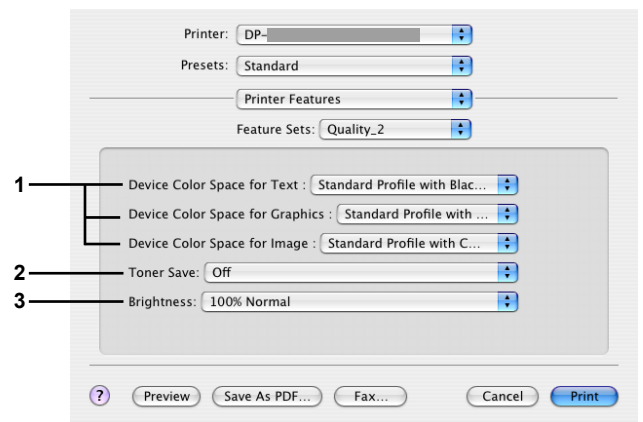
(OS X 10.2 for DP-C406/C306/C266, DP-C405/C305/C265)



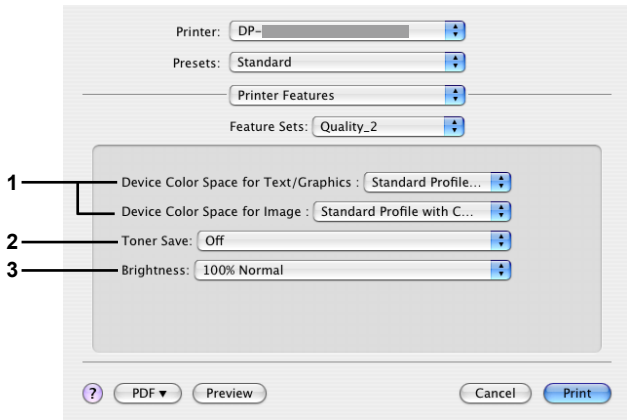
(OS X 10.2 for DP-C354/C323/C264/C263/C213)



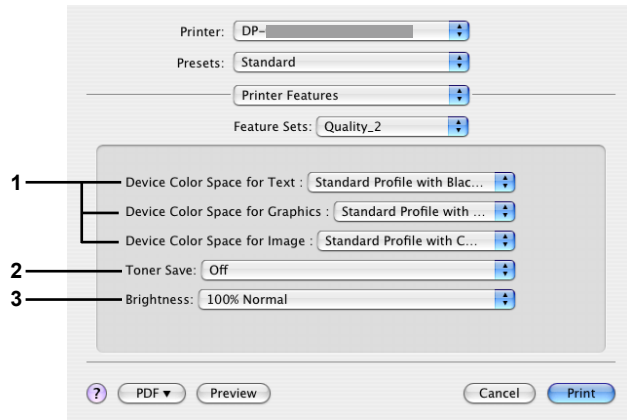
(OS X 10.3 for DP-C406/C306/C266, DP-C405/C305/C265)



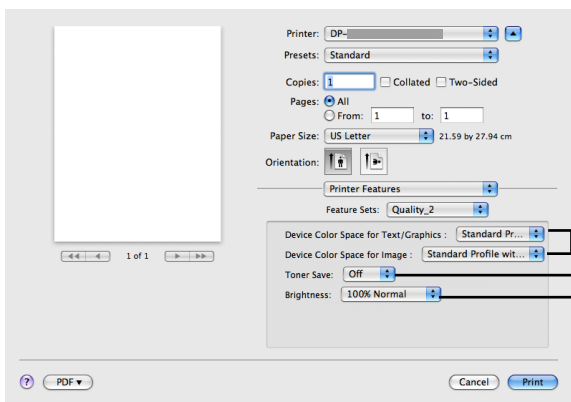
(OS X 10.3 for DP-C354/C323/C264/C263/C213)



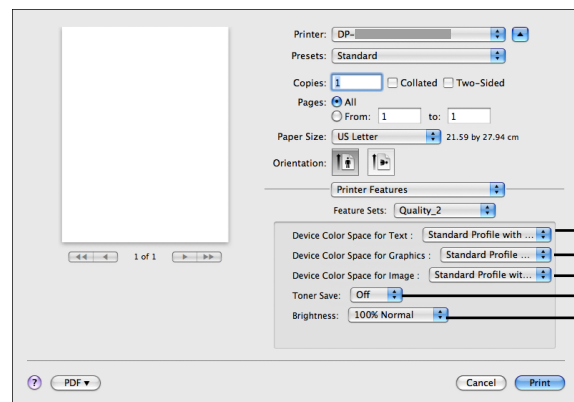
(OS X 10.4 for DP-C406/C306/C266, DP-C405/C305/C265)



(OS X 10.4 for DP-C354/C323/C264/C263/C213)



(OS X 10.5 for DP-C406/C306/C266, DP-C405/C305/C265)



(OS X 10.5 for DP-C354/C323/C264/C263/C213)

## 1. Device Color Space for Text/Graphics/Image

Specifies color reproduction and Black output for text, graphics and images.

<b>Standard Profile with Black Gray</b>	Print with color reproduction close to standard color monitors. Use only Black to reproduce intermediate shades of gray.
<b>Vivid Profile with Black Gray</b>	Print with more vivid color reproduction. A good choice for line art and graphics. Use only Black to reproduce intermediate shades of gray.
<b>Standard Profile with CMYK Gray</b>	Print with color reproduction close to standard color monitors. Use the four colors of CMYK to reproduce intermediate shades of gray.
<b>Vivid Profile with CMYK Gray</b>	Print with more vivid color reproduction. A good choice for line art and graphics. Use the four colors of CMYK to reproduce intermediate shades of gray.

## 2. Toner Save

Choose **On** to conserve toner. The overall effect is lighter, so this feature is recommended for test printing or producing documents for which appearance is not critical.

## 3. Brightness

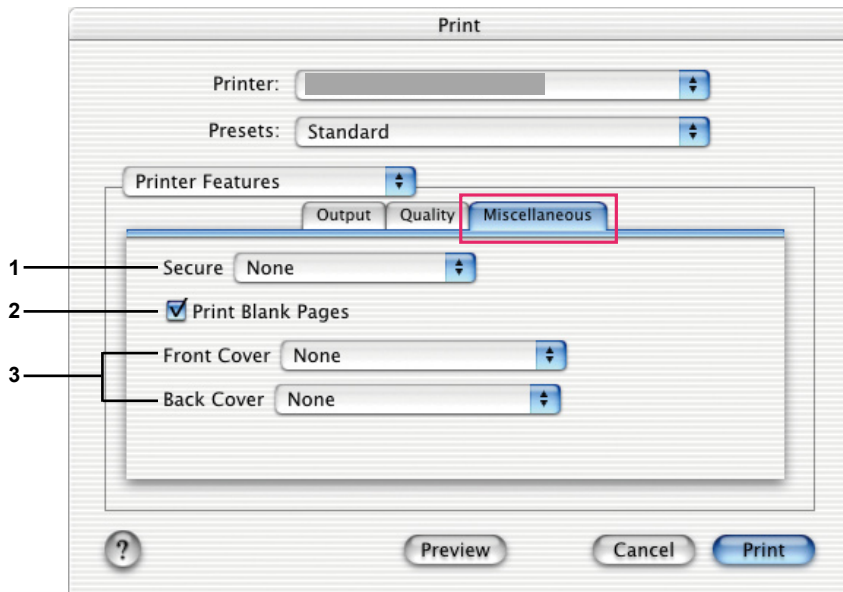
Color brightness is adjustable. 100% is normal brightness. Brightness darkens as the numerical value grows.

### Note:

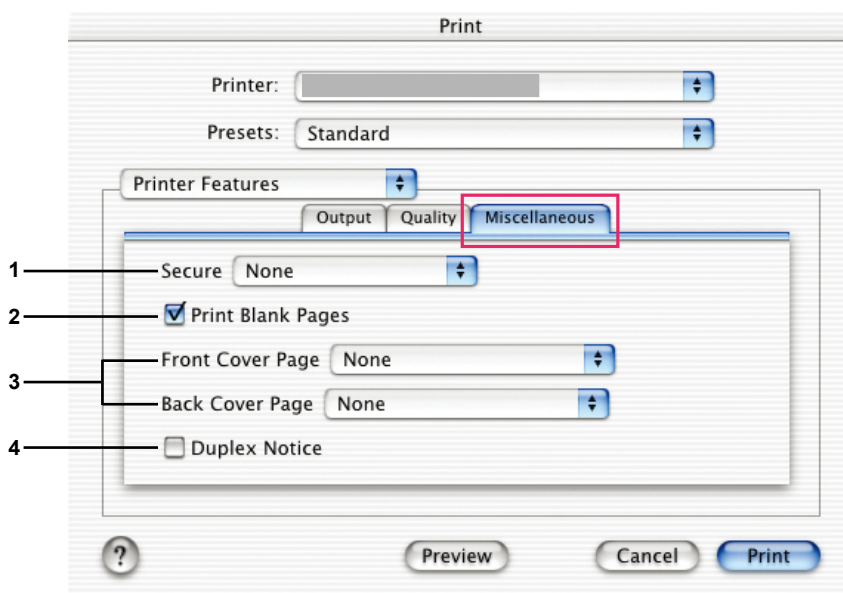
*Device Color Space for Text/Graphics/Image* is not available for DP-8060/8045/8035, DP-8032/8025, DP-3030/2330, DP-8020P/8020E, DP-190/180, UF-9000.

## ■ Miscellaneous Menu (in Printer Features Menu)

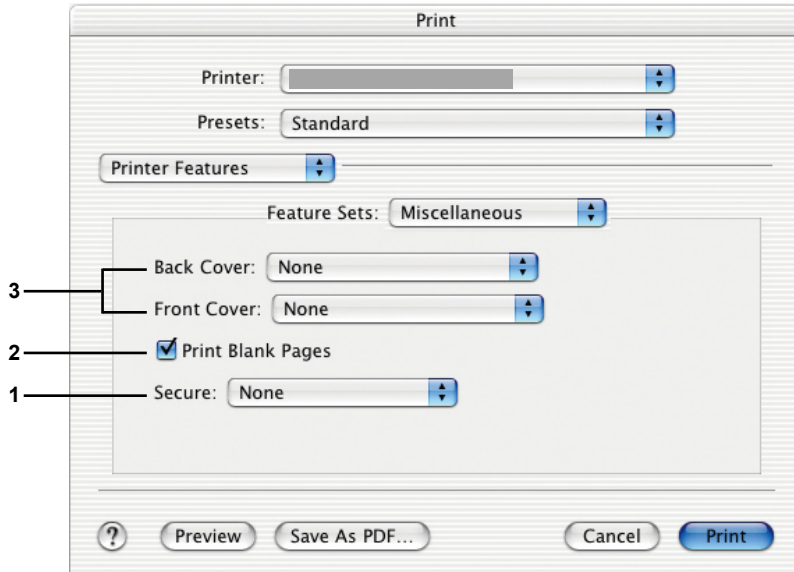
Miscellaneous menu is used for configuring Panasonic Printing System associated settings.



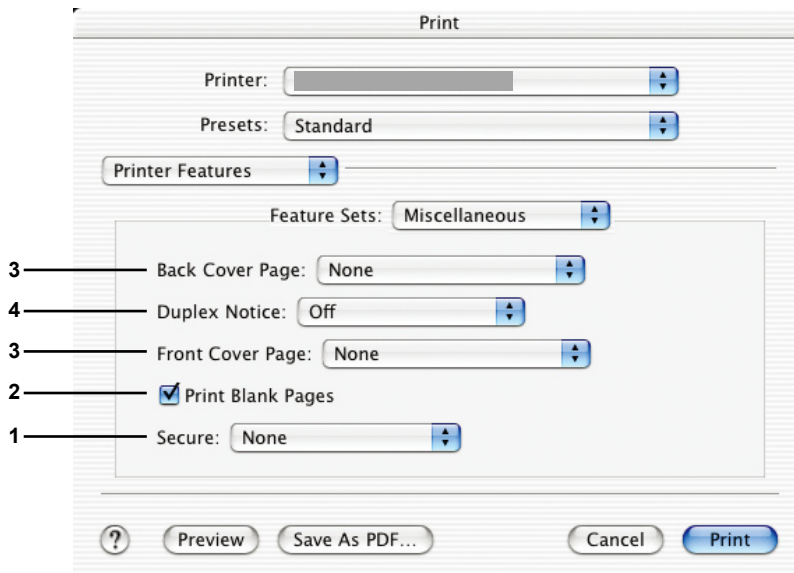
(OS X 10.1 for DP-C406/C306/C266, DP-C405/C305/C265, DP-C354/C323/C264/C263/C213, DP-8060/8045/8035, DP-8020P/8020E, DP-190/180, UF-9000)



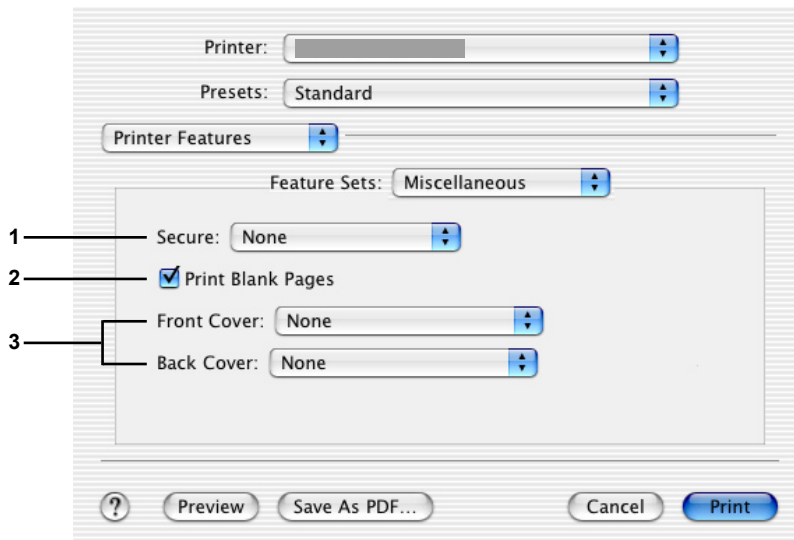
(OS X 10.1 for DP-8032/8025, DP-3030/2330)



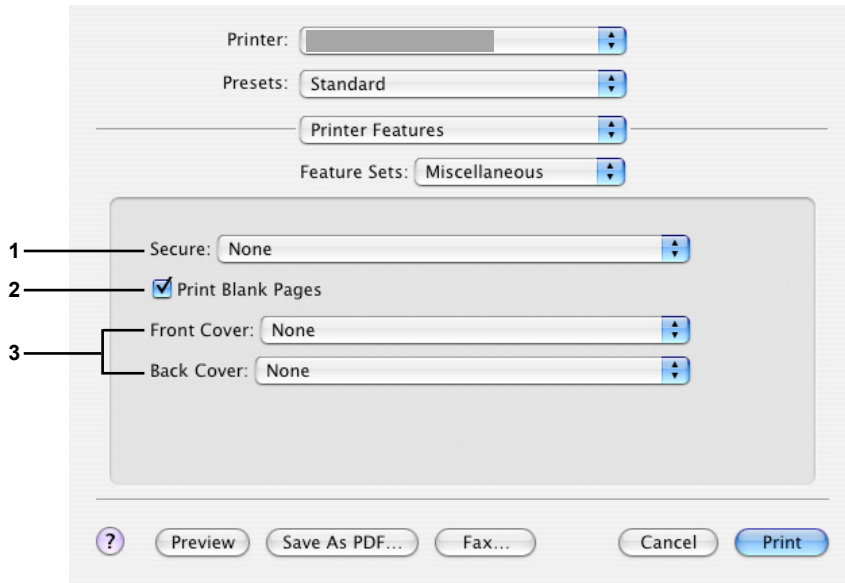
(OS X 10.2 for DP-C406/C306/C266, DP-C405/C305/C265, DP-C354/C323/C264/C263/C213, DP-8060/8045/8035)



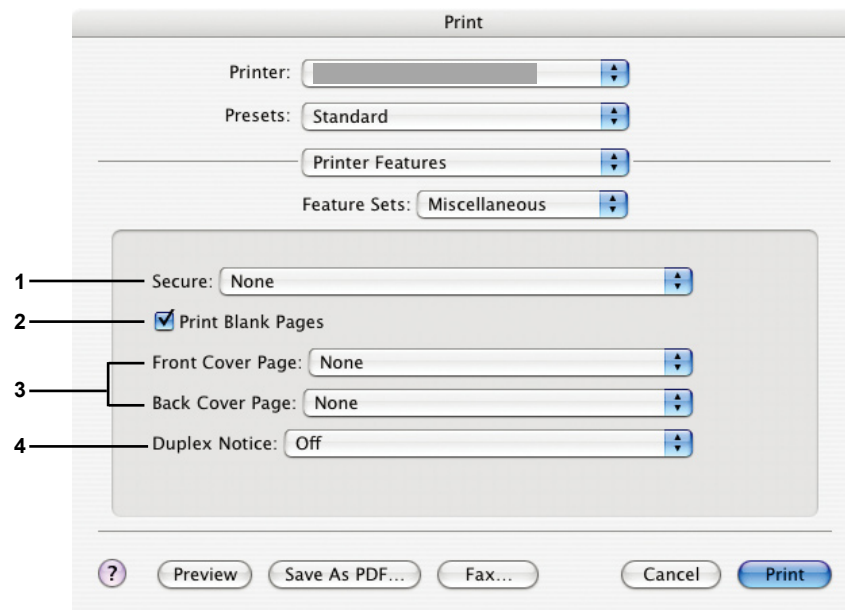
(OS X 10.2 for DP-8032/8025, DP-3030/2330)



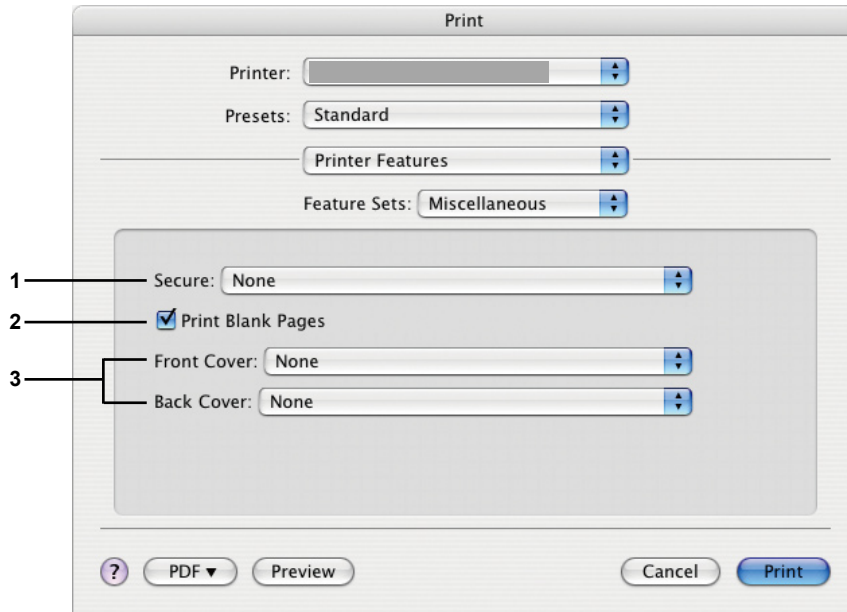
(OS X 10.2 for DP-8020P/8020E, DP-190/180, UF-9000)



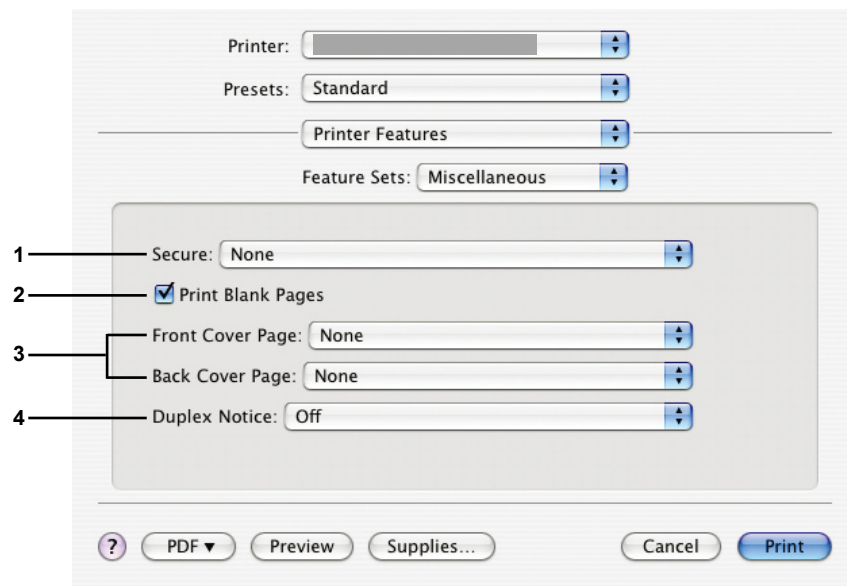
(OS X 10.3 for DP-C406/C306/C266, DP-C405/C305/C265, DP-C354/C323/C264/C263/C213, DP-8060/8045/8035, DP-8020P/8020E, DP-190/180, UF-9000)



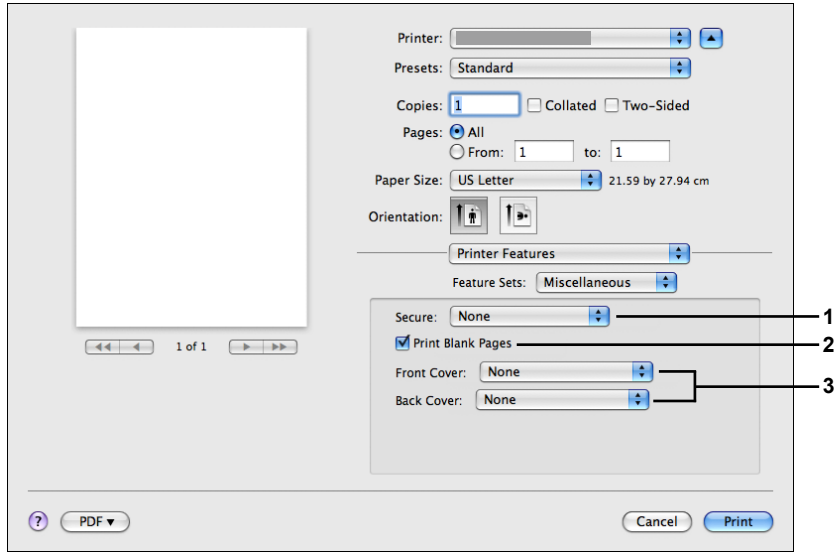
(OS X 10.3 for DP-8032/8025, DP-3030/2330)



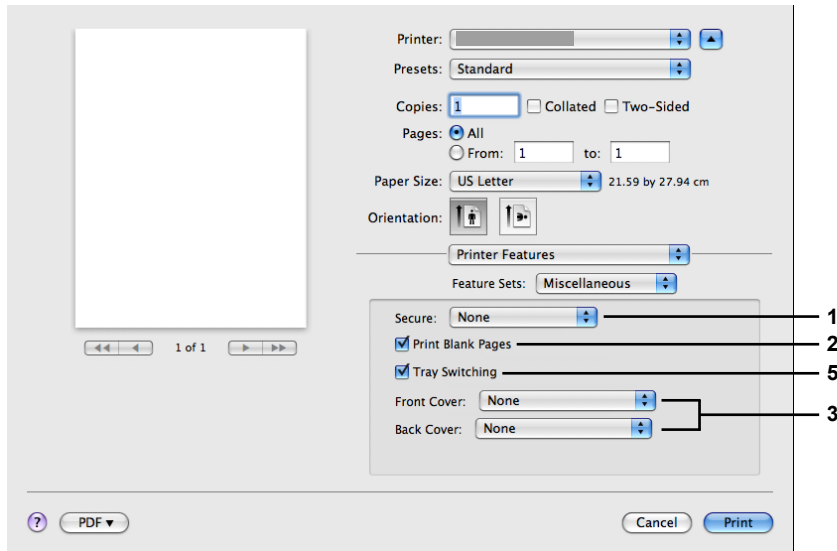
(OS X 10.4 for DP-C406/C306/C266, DP-C405/C305/C265, DP-C354/C323/C264/C263/C213, DP-8060/8045/8035, DP-8020P/8020E, DP-190/180, UF-9000)



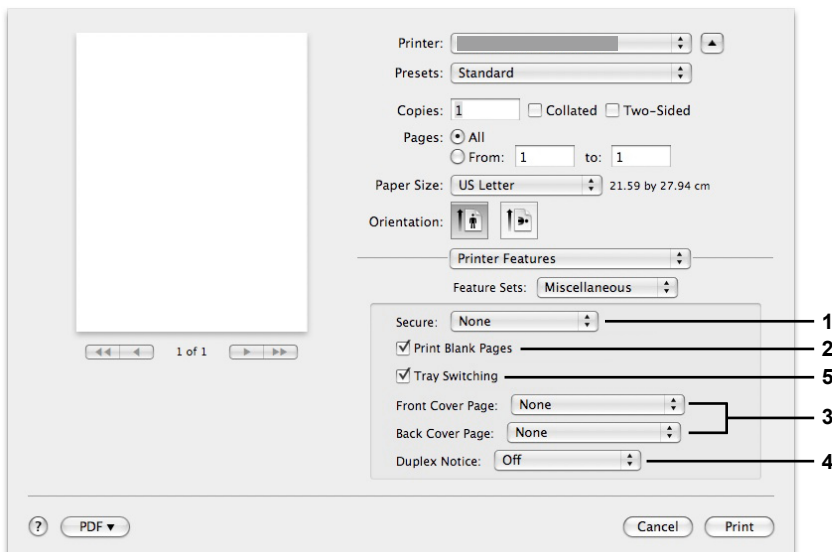
(OS X 10.4 for DP-8032/8025, DP-3030/2330)



(OS X 10.5 for DP-C406/C306/C266, DP-C405/C305/C265, DP-C354/C323/C264/C263/C213, DP-8020P/8020E, DP-190/180 UF-9000)



(OS X 10.5 for DP-8060/8045/8035)



(OS X 10.5 for DP-8032/8025, DP-3030/2330)

## 1. Secure

Printed documents can be saved on the printer's optional hard disk drive (HDD) if the printer is equipped with one. Saved documents can be printed from the printer's control panel. See "Mailbox Printing" on page 26. When using the mailbox printing function, check the HDD Unit in "Installable options". For details, refer to "Operating Instructions (For Setting Up PostScript3 Printer Driver)".

<b>None</b>	Mailbox printing is not applied.
<b>Check Then Print</b>	Allows you to print one proof set, before proceeding to print a large multi-set with various settings. The documents data will be deleted from the printer after printing.
<b>Mailbox</b>	Saves print data in the printer, in the mailbox specified by the <b>User ID</b> . The <b>User ID</b> must be entered to print documents saved in Mailbox. The document data will remain in the printer until it is deleted.
<b>Secure Mailbox</b>	Saves print data in the printer, in the mailbox specified by the <b>User ID</b> . The <b>User ID</b> and <b>Password</b> must be entered to print confidential documents saved in Secure Mailbox. The document data will remain in the printer until it is deleted.

**Note:**

- Using Mailbox printing requires that the optional **Hard Disk Drive Unit** is installed in the printer. For details, refer to the "Operating Instructions (For Setting Up PostScript3 Printer Driver)".
- Secure is not available for OS X 10.1.x.
- **Check Then Print** function is not available for DP-8060/8045/8035, DP-8032/8025, DP-3030/2330, DP-8020P/8020E, DP-190/180, UF-9000.
- Do not use **Stack**.

## 2. Print Blank Pages

Click on the checkbox to enable printing Blank pages.

## 3. Front/Back Cover or Front/Back Cover Page

You can configure the settings for cover pages. To use a cover page, select **Front Cover/Front Cover Page** or **Back Cover/Back Cover Page**, and specify the paper source to use for pages for the Front and Back covers.

## 4. Duplex Notice

Check whether "2-Sided Print" is printed on the footer of 1st page when printing with 2-Sided Page style.

**Note:**

- This option is available only for DP-8032/8025, DP-3030/2330.
- The position where the Duplex Notice is to be printed may differ depending on the Paper Orientation settings.

## 5. Tray Switching (Available for DP-8060/8045/8035, DP-8032/8025, DP-3030/2330)

Allows the paper to be fed continuously if the same size of paper is loaded in another paper tray.

This function cannot be disabled.

## Appendix

### Specifications (For DP-C406/C306/C266)

<b>Printing Speed (A4/Letter size, Plain paper from Paper Tray, 600dpi, Simplex printing)</b>	<b>DP-C406</b> : Black and White	: 40 sheets/minute
	: Color	: 30 sheets/minute
	<b>DP-C306</b> : Black and White	: 30 sheets/minute
	: Color	: 30 sheets/minute
	<b>DP-C266</b> : Black and White	: 26 sheets/minute
	: Color	: 26 sheets/minute
<b>Resolution (dots per inch)</b>	600 x 600, 1200 x 1200	
<b>Interface</b>	USB 2.0 Ethernet (10Base-T/100Base-TX/1000Base-T)	
<b>Printer Language</b>	Adobe® PostScript® 3™	
<b>Fonts</b>	136 Typeface fonts	
<b>Supplied Printer Driver</b>	Windows 2000, Windows XP, Windows Server 2003, Windows Vista, Windows Server 2008, Mac OS 8.6/9.x, Mac OS X 10.1 - 10.5	
<b>Operating System Support</b>	Windows 2000, Windows XP, Windows Server 2003, Windows Vista, Windows Server 2008, Mac OS 8.6/9.x, Mac OS X 10.1 - 10.5	
<b>Network Printing Protocol Support</b>	LPR, IPP, SMB, Standard TCP/IP Port Printing (RAW/LPR), EtherTalk	
<b>Printer Working Memory</b>	64MB (240MB: When memory is expanded.)	

## Specifications (For DP-C405/C305/C265, DP-C354/C323/C264/C263/C213)

<b>Printing Speed (A4/Letter size, Plain paper from Paper Tray, 600dpi, Simplex printing)</b>	<b>DP-C405</b> : Black and White	: 40 sheets/minute
	: Color	: 30 sheets/minute
	<b>DP-C305</b> : Black and White	: 30 sheets/minute
	: Color	: 30 sheets/minute
	<b>DP-C265</b> : Black and White	: 26 sheets/minute
	: Color	: 26 sheets/minute
	<b>DP-C354</b> : Black and White	: 35 sheets/minute
	: Color	: 26 sheets/minute
	<b>DP-C323</b> : Black and White	: 32 sheets/minute
	: Color	: 21 sheets/minute
<b>DP-C264</b> : Black and White	: 26 sheets/minute	
: Color	: 26 sheets/minute	
<b>DP-C263</b> : Black and White	: 26 sheets/minute	
: Color	: 21 sheets/minute	
<b>DP-C213</b> : Black and White	: 21 sheets/minute	
: Color	: 21 sheets/minute	
<b>Resolution (dots per inch)</b>	600 x 600, 1200 x 1200	
<b>Interface</b>	USB 2.0 Ethernet (10Base-T/100Base-TX)	
<b>Printer Language</b>	Adobe® PostScript® 3™	
<b>Fonts</b>	136 Typeface fonts	
<b>Supplied Printer Driver</b>	Windows 2000, Windows XP, Windows Server 2003, Windows Vista, Mac OS 8.6/9.x, Mac OS X 10.1 - 10.5	
<b>Operating System Support</b>	Windows 2000, Windows XP, Windows Server 2003, Windows Vista, Mac OS 8.6/9.x, Mac OS X 10.1 - 10.5, NetWare® 3.x, NetWare® 4.x, NetWare® 5.x, NetWare® 6 (Required IPX/SPX setup utility)	
<b>Network Printing Protocol Support</b>	LPR, IPP, SMB, Standard TCP/IP Port Printing (RAW/LPR), NetWare®, EtherTalk	
<b>Printer Working Memory</b>	64MB (240MB: When memory is expanded.)	

## Specifications (For DP-8060/8045/8035)

<b>Printing Speed</b> (A4/Letter size, Plain paper, simplex printing)	<b>DP-8060</b> : 60 sheets/minute <b>DP-8045</b> : 45 sheets/minute <b>DP-8035</b> : 35 sheets/minute
<b>Resolution</b> (dots per inch)	300 x 300, 600 x 600, 1200 (Equivalent) x 600
<b>Interface</b>	Parallel Port Ethernet (10Base-T/100Base-TX)
<b>Printer Language</b>	Adobe® PostScript® 3™
<b>Fonts</b>	136 Typeface fonts
<b>Supplied Printer Driver</b>	Windows 2000, Windows XP, Windows Server 2003, Windows Vista, Mac OS 8.6/9.x, Mac OS X 10.1 - 10.5
<b>Operating System Support</b>	Windows 2000, Windows XP, Windows Server 2003, Windows Vista, Mac OS 8.6/9.x, Mac OS X 10.1 - 10.5, NetWare 3.x, NetWare 4.x, NetWare 5.x, NetWare 6 (Required IPX/SPX setup wizard)
<b>Network Printing Protocol Support</b>	LPR, IPP, Standard TCP/IP Port Printing (RAW/LPR), NetWare, EtherTalk
<b>Printer Working Memory</b>	50MB

## Specifications (For DP-8032/8025)

<b>Printing Speed</b> (A4/Letter size, Plain paper, simplex printing)	<b>DP-8032</b> : 32 sheets/minute <b>DP-8025</b> : 25 sheets/minute
<b>Resolution</b> (dots per inch)	300 x 300, 600 x 600, 1200 x 600
<b>Interface</b>	USB connection Ethernet (10Base-T/100Base-TX)
<b>Printer Language</b>	Adobe® PostScript® 3™
<b>Fonts</b>	136 Typeface fonts
<b>Supplied Printer Driver</b>	Windows 2000, Windows XP, Windows Server 2003, Windows Vista, Mac OS 8.6/9.x, Mac OS X 10.1 - 10.5
<b>Operating System Support</b>	Windows 2000, Windows XP, Windows Server 2003, Windows Vista, Mac OS 8.6/9.x, Mac OS X 10.1 - 10.5
<b>Network Printing Protocol Support</b>	LPR, IPP, Standard TCP/IP Port Printing (RAW/LPR), EtherTalk
<b>Printer Working Memory</b>	50MB

## Specifications (For DP-3030/2330)

<b>Printing Speed</b> (A4/Letter size, Plain paper, simplex printing)	<b>DP-3030</b> : 30 sheets/minute <b>DP-2330</b> : 23 sheets/minute
<b>Resolution</b> (dots per inch)	300 x 300, 600 x 600, 1200 x 600
<b>Interface</b>	USB connection Ethernet (10Base-T/100Base-TX)
<b>Printer Language</b>	Adobe® PostScript® 3™
<b>Fonts</b>	136 Typeface fonts
<b>Supplied Printer Driver</b>	Windows 2000, Windows XP, Windows Server 2003, Windows Vista, Mac OS 8.6/9.x, Mac OS X 10.1 - 10.5
<b>Operating System Support</b>	Windows 2000, Windows XP, Windows Server 2003, Windows Vista, Mac OS 8.6/9.x, Mac OS X 10.1 - 10.5, NetWare 3.x, NetWare 4.x, NetWare 5.x, NetWare 6 (Required IPX/SPX setup wizard)
<b>Network Printing Protocol Support</b>	LPR, IPP, Standard TCP/IP Port Printing (RAW/LPR), NetWare, EtherTalk
<b>Printer Working Memory</b>	50MB

## Specifications (For DP-8020P/8020E)

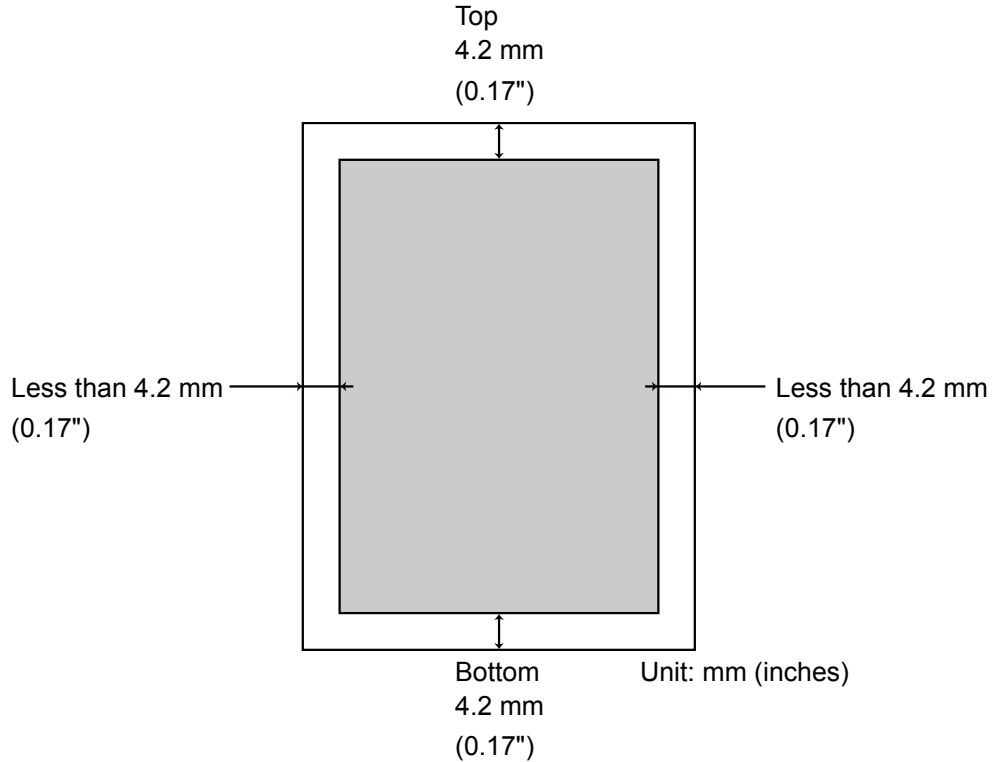
<b>Printing Speed</b> (A4/Letter size, Plain paper, simplex printing)	<b>DP-8020P</b> : 20 cpm (Letter size) <b>DP-8020E</b> : 20 cpm (Letter size)
<b>Resolution</b> (dots per inch)	300 x 300, 600 x 600, 1200 x 1200
<b>Interface</b>	USB connection Ethernet (10Base-T/100Base-TX)
<b>Printer Language</b>	Adobe® PostScript® 3™
<b>Fonts</b>	136 Typeface fonts
<b>Supplied Printer Driver</b>	Windows 2000, Windows XP, Windows Server 2003, Windows Vista, Mac OS 8.6/9.x, Mac OS X 10.1 - 10.5
<b>Operating System Support</b>	Windows 2000, Windows XP, Windows Server 2003, Windows Vista, Mac OS 8.6/9.x, Mac OS X 10.1 - 10.5
<b>Network Printing Protocol Support</b>	LPR, IPP, Standard TCP/IP Port Printing (LPR), EtherTalk
<b>Printer Working Memory</b>	20MB

## Specifications (For DP-190/180, UF-9000)

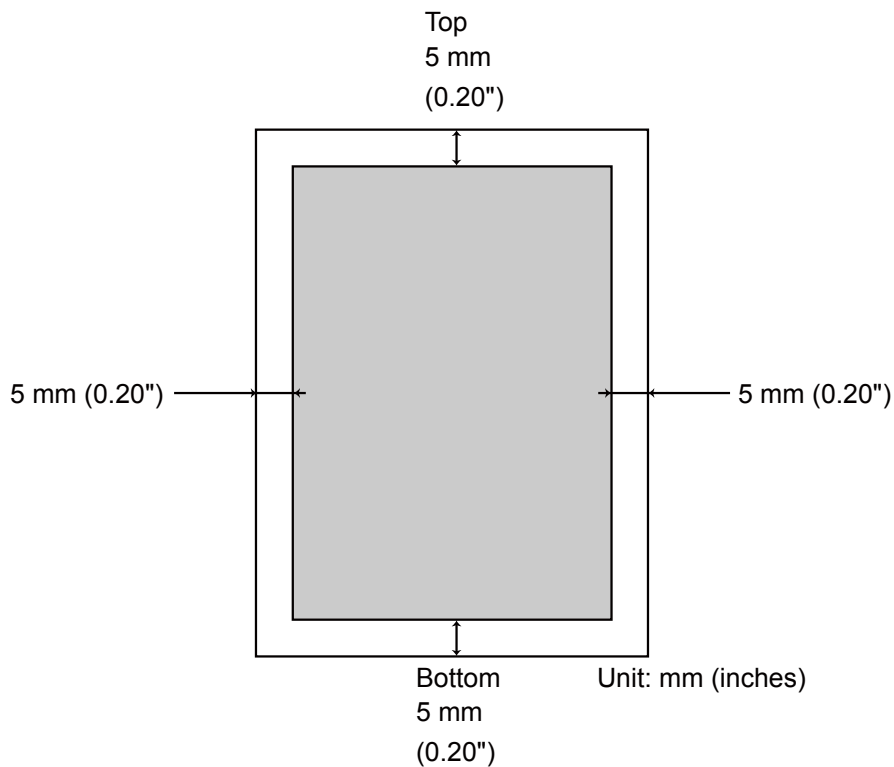
<b>Printing Speed (A4/Letter size, Plain paper, simplex printing)</b>	<b>DP-190</b> : 19 sheets/minute (Letter size) <b>DP-180</b> : 18 sheets/minute (A4 size) <b>UF-9000</b> : 18 sheets/minute (A4 size) 19 sheets/minute (Letter size)
<b>Resolution (dots per inch)</b>	300 x 300, 600 x 600, 1200 (Equivalent) x 600
<b>Interface</b>	USB 1.1 Ethernet (10Base-T/100Base-TX)
<b>Printer Language</b>	Adobe® PostScript® 3™
<b>Fonts</b>	136 Typeface fonts
<b>Supplied Printer Driver</b>	Windows 2000, Windows XP, Windows Server 2003, Windows Vista, Mac OS 8.6/9.x, Mac OS X 10.1 - 10.5
<b>Operating System Support</b>	Windows 2000, Windows XP, Windows Server 2003, Windows Vista, Mac OS 8.6/9.x, Mac OS X 10.1 - 10.5
<b>Network Printing Protocol Support</b>	LPR, IPP, Standard TCP/IP Port Printing (LPR), EtherTalk
<b>Printer Working Memory</b>	20MB

## Printing Area

When printing to the device, there is a non-printable margin on all 4 sides.



(For DP-C406/C306/C266, DP-C405/C305/C265, DP-C354/C323/C264/C263/C213)



(For DP-8060/8045/8035, DP-8032/8025, DP-3030/2330, DP-8020P/8020E, DP-190/180, UF-9000)

# PostScript® Font List

## PostScript® Fonts

Albertus ‡	GillSans ‡	Monaco □
Albertus Italic ‡	GillSans Bold ‡	New Century Schoolbook Bold †
Albertus Light ‡	GillSans Condensed Bold ‡	New Century Schoolbook Bold Italic †
AntiqueOlive Bold §	GillSans Bold Italic ‡	New Century Schoolbook Italic †
AntiqueOlive Compact §	GillSans Condensed ‡	New Century Schoolbook Roman †
AntiqueOlive Italic §	GillSans Extra Bold ‡	NewYork □
AntiqueOlive Roman §	GillSans Italic ‡	Optima †
Apple Chancery □	GillSans Light ‡	Optima Bold †
Arial ‡	GillSans Light Italic ‡	Optima Bold Italic †
Arial Bold ‡	Goudy Oldstyle	Optima Italic †
Arial Bold Italic ‡	Goudy Bold	Oxford *
Arial Italic ‡	Goudy Bold Italic	Palatino Bold †
ITC AvantGarde Gothic Book °	Goudy ExtraBold	Palatino Bold Italic †
ITC AvantGarde Gothic Book Oblique °	Goudy Oldstyle Italic	Palatino Italic †
ITC AvantGarde Gothic Demi °	Helvetica †	Palatino Roman †
ITC AvantGarde Gothic Demi Oblique °	Helvetica Bold †	Stempel Garamond Bold †
Bodoni	Helvetica Bold Oblique †	Stempel Garamond Bold Italic †
Bodoni Bold	Helvetica Condensed †	Stempel Garamond Italic †
Bodoni Bold Italic	Helvetica Condensed Bold †	Stempel Garamond Roman †
Bodoni Italic	Helvetica Condensed Bold Oblique †	ITC Symbol °
Bodoni Poster	Helvetica Condensed Oblique †	Tekton •
Bodoni Poster Compressed	Helvetica Narrow †	Times Bold †
ITC Bookman Demi °	Helvetica Narrow Bold †	Times Bold Italic †
ITC Bookman Demi Italic °	Helvetica Narrow Bold Oblique †	Times Italic †
ITC Bookman Light °	Helvetica Narrow Oblique †	Times Roman †
ITC Bookman Light Italic °	Helvetica Oblique †	Times New Roman †
Carta •	HoeflerText Black □	Times New Roman Bold †
Chicago □	HoeflerText Black Italic □	Times New Roman Bold Italic †
Clarendon †	HoeflerText Italic □	Times New Roman Italic †
Clarendon Bold †	HoeflerText Ornaments □	Univers †
Clarendon Light †	HoeflerText □	Univers Bold †
CooperBlack	Joanna ‡	Univers Bold Oblique †
CooperBlack Italic	Joanna Bold ‡	Univers Oblique †
Copperplate Gothic 33BC	Joanna Bold Italic ‡	Univers Light †
Copperplate Gothic 32BC	Joanna Italic ‡	Univers Light Oblique †
Coronet ••	LetterGothic	UniversCondensed †
Courier	LetterGothic Bold	UniversCondensed Bold †
Courier Bold	LetterGothic Bold Slanted	UniversCondensed Bold Oblique †
Courier Bold Oblique	LetterGothic Slanted	UniversCondensed Oblique †
Courier Oblique	ITC Lubalin Graph Book °	UniversExtended †
Eurostile **	ITC Lubalin Graph Book Oblique °	UniversExtended Bold †
Eurostile Bold **	ITC Lubalin Graph Demi °	UniversExtended Bold Oblique †
Eurostile Bold Extended Two **	ITC Lubalin Graph Demi Oblique °	UniversExtended Oblique †
Eurostile Extended Two **	Marigold *	Wingdings ~
Geneva □	ITC Mona Lisa Recut °	ITC ZapfChancery MediumItalic °
		ITC ZapfDingbats °

Adobe, PostScript, the Adobe logo and the Post Script logo are trademarks of Adobe Systems Incorporated which may be registered in certain jurisdictions.

• registered trademark of Adobe Systems Incorporated

\* trademark of AlphaOmega Typography

□ trademark of Apple Computer, Inc.

•• registered trademark of Ludlow Type Foundry

° registered trademark of International Typeface Corporation

† trademark of Linotype-Hell AG and/or its subsidiaries

§ registered trademark of Marcel Olive

~ trademark of Microsoft Corporation

‡ trademark of The Monotype Corporation

\*\* trademark of Nebiolo

## Memo

# Troubleshooting

## Printing Operation Failure

If the printing operation fails, check the following items first:

- The connecting cable (Parallel Port or Ethernet LAN cable) is properly connected.
- Power of the device is turned ON.
- Paper is loaded properly in the device.
- An error message is not displayed on the device. (See Note)

The above points can be verified by printing a test page. Refer to OS manuals, help topics, and/or Online Support for the procedures on test page printing.

---

**NOTE**

*The status of the devices can be verified with the **Device Monitor**.  
Refer to the Operating Instructions (For Device Monitor).*

## Documents Not Printing Correctly

Problem	Possible Cause / Solution(s)
Incorrect printing position or print is missing at the edge.	<ul style="list-style-type: none"> <li>• Paper size or printing orientation is different between the application settings, and the printer driver settings - Specify the settings again.</li> <li>• The specified paper has not been loaded into the device - Check the settings again, or load the appropriate paper.</li> <li>• The document margin is not sufficient.</li> </ul>
Characters and symbols not used in documents are printed.	Verify that the correct machine has been selected by users as the printer driver.
Printing operation takes excessive time.	The wait time for printing operations depends on the spool settings.
Although print data is transferred to the device, it is not printed.	<ul style="list-style-type: none"> <li>• Make sure that the printer is Online.</li> <li>• Make sure the Parallel Port printer cable, or Ethernet LAN cable is connected properly.</li> <li>• Restore the power if the On line LED is Off even if the Parallel Port printer cable is connected.</li> </ul>
Printing stops in the middle of the run.	• Check whether there is a Network problem.
Document is not printed from the Multi-Purpose Tray (Sheet Bypass).	<ul style="list-style-type: none"> <li>• Verify the Paper Size set to the Multi-Purpose Tray (Sheet Bypass).</li> <li>• Set the Paper Size as the following procedures.               <ol style="list-style-type: none"> <li>1. Press the <input type="button" value="Copy"/> key.</li> <li>2. Select “<b>Paper/Output Tray</b>”, “<b>PAPER TRAY:</b>” or “<b>PAPER TRAY</b>”.</li> <li>3. Select “<b>Change Size/Media</b>” or “<b>SIZE CHANGE</b>”.</li> <li>4. Select the paper size and select “<b>OK</b>”.</li> </ol> </li> </ul> <p><b>Note:</b></p> <ul style="list-style-type: none"> <li>• For DP-8020P/8020E, press the “<b>Paper Tray</b>” key several times until the desired paper size is displayed. There is no need to press the “<b>OK</b>” key after pressing the “<b>Paper Tray</b>” key to set the paper size.</li> <li>• Select “<b>Auto</b>” on step 4 if the following paper size is loaded on the Multi-Purpose Tray (Sheet Bypass). The Paper Size is automatically set properly.</li> </ul> <p>For USA and Canada users : Ledger., Legal, Letter, Invoice            Except for USA and Canada users : A3, B4, FLS, A4, A5</p>
Document is not printed correctly, and the following message is printed out instead. “This job contains Binary Data, but your printer requires a special driver setting to receive binary data on this channel.”	Verify that the Output protocol in the Device Settings is set to ASCII.

## Error Messages Displayed on the Computer

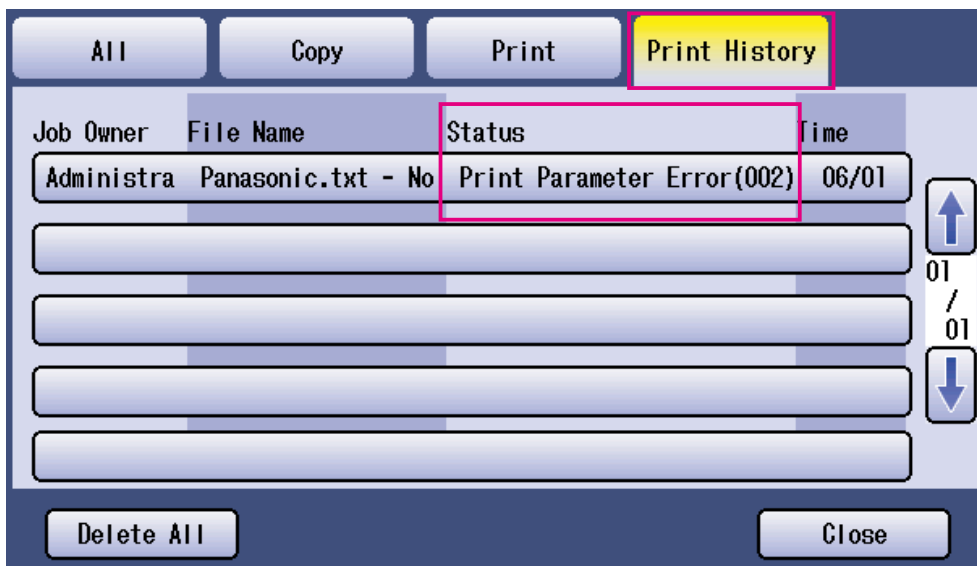
Problem	Possible Cause / Solution(s)
Error writing to USB. Unable to write to the Specified device. (USB connection is not available for DP-8060/8045/8035)	Verify that the device is connected to the computer correctly. Verify that the power of the device is turned On.
Error writing to USB. Printer timeout error occurred. (USB connection is not available for DP-8060/8045/8035)	Verify that the power of the device is turned On. Excessive data volume or number of pages may overflow the device's memory, disabling data reception. Increase the timeout setting value in properties (For transmission retry).
Printing is disabled due to an error in the current printer settings.	Differences in settings such as paper size or printing orientation exist between the application and the printer driver. Correct the settings.

## Error Messages Displayed on Your Machine For DP-C406/C306/C266, DP-C405/C305/C265, DP-C354/C323/C264/C263/C213

If a document is not printed out, an error may have occurred. From the error messages displayed on the Control Panel, it is possible to know what caused the problem, and how the problem can be taken care of.

Checking Error Messages: Press the **Print** key, select the **Job Control** button and the **Output Queue** button. Then, select the **Print History** tab. The error message(s) are shown on the Status column.

Once you know the error message, check below for the cause and solution for the error.



Error Messages	Possible Cause	Solution(s)
Print Parameter Error(001)	The Duplex Unit does not function properly.	Contact to the Panasonic Authorized Dealer.
Print Parameter Error(002)	Specified a <b>Paper Source</b> which is not installed on your machine.	<ul style="list-style-type: none"> <li>Verify the Installable option settings correctly on your printer driver.</li> <li>Verify the <b>Number of Paper Tray</b> settings correctly on your printer driver.</li> </ul>
Print Parameter Error(004) Print Parameter Error(005)	Specified the <b>Output Tray</b> to <b>Finisher</b> . However, the Finisher Unit is not installed on the machine. Specified the <b>Sort Method</b> to Shift, or specified the position of the staple.	<ul style="list-style-type: none"> <li>Verify the Installable option settings correctly on your printer driver.</li> <li>Verify the <b>Finisher</b> settings correctly on your printer driver.</li> </ul>

Error Messages	Possible Cause	Solution(s)
Print Parameter Error(006)	Specified the hole punch position. However, the Punch Unit is not installed on the machine.	<ul style="list-style-type: none"> <li>Verify the Installable option settings correctly on your printer driver.</li> <li>Verify the <b>Punch Unit</b> settings correctly on your printer driver.</li> </ul>
Print Parameter Error(101)	Specified a Paper Source unable to print in Duplex. (Duplex printing is not possible from the tray set with A5 in Landscape format)	<ul style="list-style-type: none"> <li>Specify the tray set with the A5 in portrait format.</li> <li>Select <b>Automatically Select</b> on the <b>Paper Source</b> menu.</li> </ul>
Print Parameter Error(104)	Specified a Paper Source unable to shift sort. <ul style="list-style-type: none"> <li>Only when 1 Bin Finisher is in use.</li> <li>It is not possible to shift sort with B5 in portrait format.</li> </ul>	<ul style="list-style-type: none"> <li>Specify the tray set with the B5 in Landscape format.</li> </ul>
Print Parameter Error(106) Print Parameter Error(107)	Specified a wrong Paper Source when printing a document with stapling.	<ul style="list-style-type: none"> <li>Verify the Installable option settings correctly on your printer driver.</li> <li>Verify the <b>Finisher</b> settings correctly on your printer driver.</li> <li>Select <b>Automatically Select</b> on the <b>Paper Source</b> menu.</li> </ul>
Print Parameter Error(108) Print Parameter Error(109)	Specified a wrong Paper Source when printing a document with punching.	<ul style="list-style-type: none"> <li>Verify the Installable option settings correctly on your printer driver.</li> <li>Verify the <b>Punch Unit</b> settings correctly on your printer driver.</li> <li>Select <b>Automatically Select</b> on the <b>Paper Source</b> menu.</li> </ul>
Print Parameter Error(119)	Specified a wrong Media Type when printing a document with Rotate sorting.	<ul style="list-style-type: none"> <li>Verify the Media Type setting on your machine.</li> <li>Select the same media type on the printer driver as set on your machine.</li> </ul>
Printer Parameter Error(125)	Specified to staple documents of different document sizes.	<ul style="list-style-type: none"> <li>Cancel <b>Staple</b>, and try print again.</li> </ul>
Print Parameter Error(126)	Specified to Punch documents of different document sizes.	<ul style="list-style-type: none"> <li>Cancel <b>Punch</b>, and try print again.</li> </ul>

## Memo

**USA Only**

## **WARRANTY**

PANASONIC COMMUNICATIONS COMPANY OF NORTH AMERICA MAKES NO WARRANTIES, GUARANTEES OR REPRESENTATIONS, EXPRESSED OR IMPLIED, TO THE CUSTOMER WITH RESPECT TO THIS PANASONIC MACHINE, INCLUDING BUT NOT LIMITED TO, ANY IMPLIED WARRANTY OF MERCHANTABILITY OR FITNESS FOR A PARTICULAR PURPOSE.

PANASONIC COMMUNICATIONS COMPANY OF NORTH AMERICA ASSUMES NO RISK AND SHALL NOT BE SUBJECT TO LIABILITY FOR ANY DAMAGE, INCLUDING, BUT NOT LIMITED TO DIRECT, INDIRECT, SPECIAL, INCIDENTAL OR CONSEQUENTIAL DAMAGES OR LOSS OF PROFITS SUSTAINED BY THE CUSTOMER IN CONNECTION WITH THE USE OR APPLICATION OF THIS PANASONIC MACHINE. SEE YOUR DEALER FOR DETAILS OF DEALER'S WARRANTY.

For Service, Call: \_\_\_\_\_

Panasonic Communications Company of North America,  
Unit of Panasonic Corporation of North America  
One Panasonic Way  
Secaucus, New Jersey 07094  
<http://panasonic.net>

Panasonic Canada Inc.  
5770 Ambler Drive  
Mississauga, Ontario L4W 2T3  
<http://www.panasonic.ca>

For Customer Support (Except for  
USA and Canada Users):  
Panasonic Communications Co., Ltd.  
Fukuoka, Japan  
<http://panasonic.net>

I1006-12128 (10)  
PJQMC0922RA  
April 2009  
Published in Japan